

# PORT MALABAR

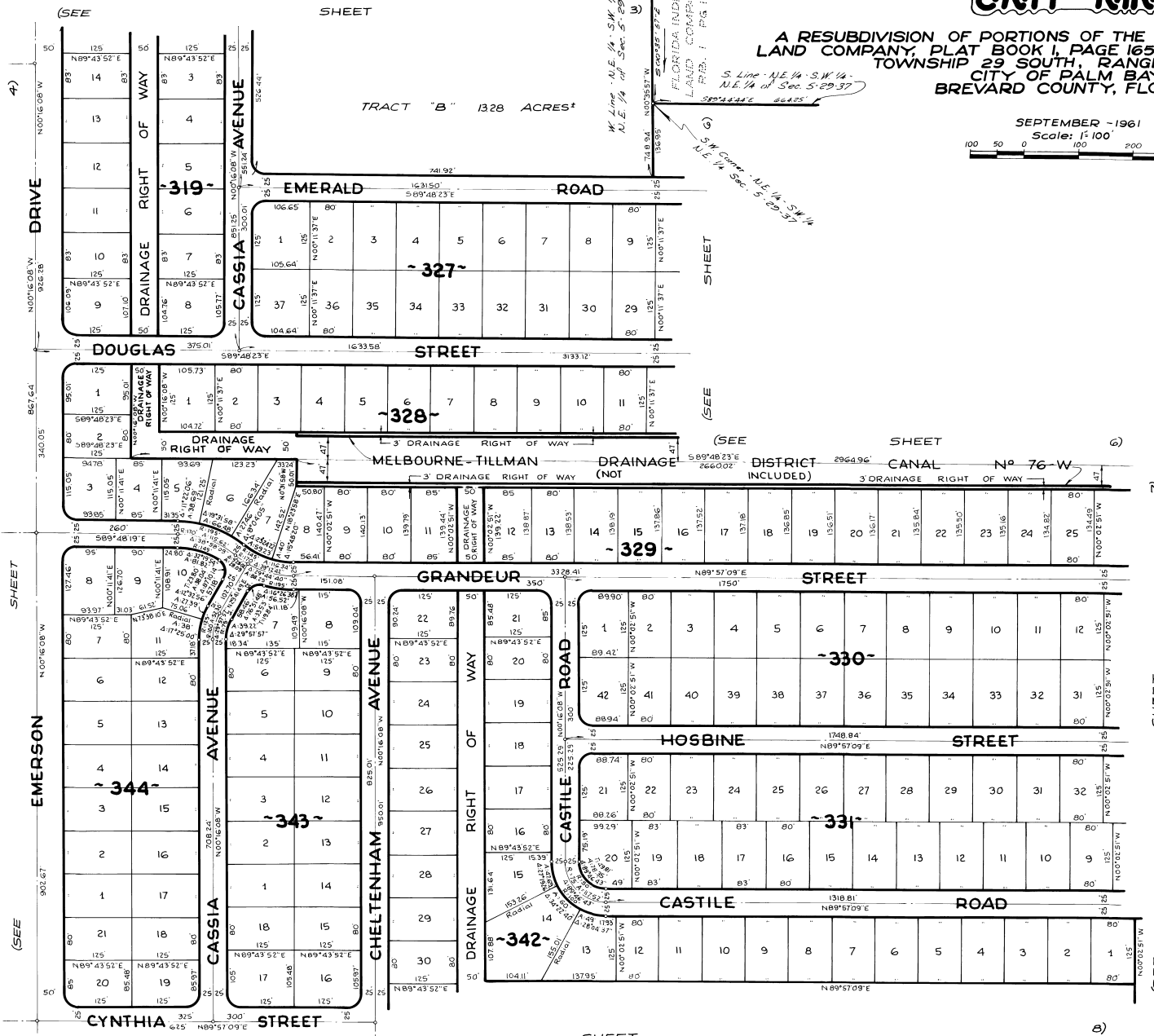
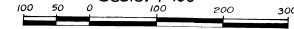
## UNIT NINE

PLAT BOOK 15  
PAGE 5

A RESUBDIVISION OF PORTIONS OF THE FLORIDA INDIAN RIVER  
LAND COMPANY, PLAT BOOK 1, PAGE 165, IN SECTIONS 4, 5 AND 6,  
TOWNSHIP 29 SOUTH, RANGE 37 EAST  
CITY OF PALM BAY  
BREVARD COUNTY, FLORIDA

SEPTEMBER - 1961

Scale: 1" = 100'



TRACT "B" 1328 ACRES±

SHEET

CALCULATED BY: R.G.  
DRAWN BY: V.M.F.  
CHECKED BY: J.B.  
APPROVED BY: C.G.H.

ARTHUR L. DAY  
CIVIL ENGINEER  
MIAMI - FLORIDA

SHEET 5 OF 9 SHEETS  
183 LOTS THIS SHEET