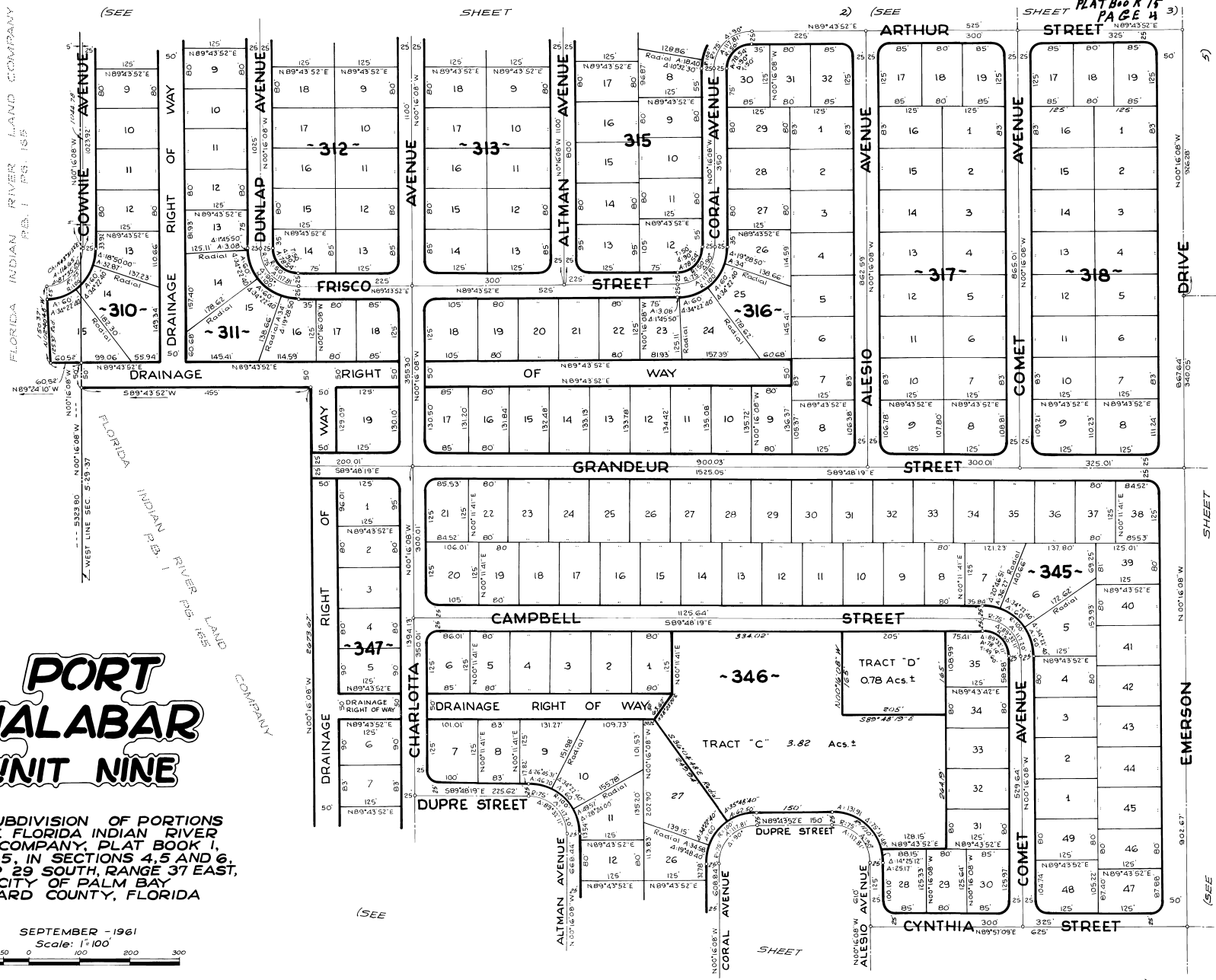




# PORT MALABAR UNIT NINE

A RESUBDIVISION OF PORTIONS OF THE FLORIDA INDIAN RIVER LAND COMPANY, PLAT BOOK 1, PAGE 165, IN SECTIONS 4, 5 AND 6, TOWNSHIP 29 SOUTH, RANGE 37 EAST, CITY OF PALM BAY BREVARD COUNTY, FLORIDA

SEPTEMBER - 1961  
Scale: 1"=100'



CALCULATED BY: R.G.  
DRAWN BY: V.M.F.  
CHECKED BY: J.B.  
APPROVED BY: C.G.K.

ARTHUR L. DAY  
CIVIL ENGINEER  
MIAMI - FLORIDA