

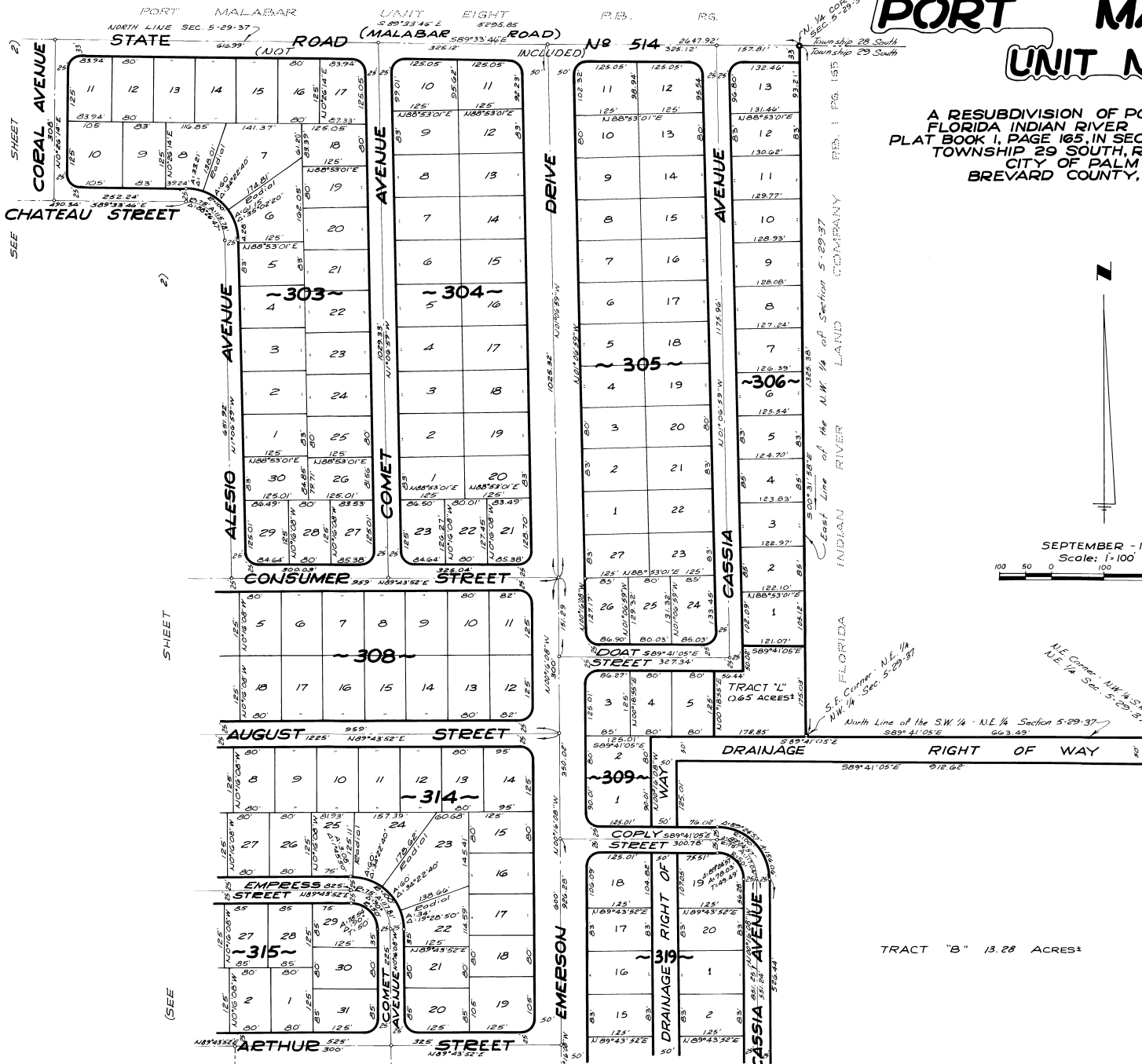
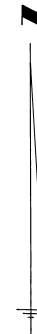
PORT MALABAR

UNIT NINE

PLAT BOOK 15
PAGE 3

A RESUBDIVISION OF PORTIONS OF THE
FLORIDA INDIAN RIVER LAND COMPANY,
PLAT BOOK 1, PAGE 165, IN SECTIONS 4, 5 AND 6,
TOWNSHIP 29 SOUTH, RANGE 37 EAST,
CITY OF PALM BAY
BREVARD COUNTY, FLORIDA

SEPTEMBER - 1961
Scale: 1-100



1/4 COR. SEC. 5-29-37
Township 29 South
Range 37 East
FLORIDA INDIAN RIVER LAND COMPANY
East Line of the N.W. 1/4 of Section 5-29-37
N.E. Corner - N.W. 1/4 Sec. 5-29-37
N.E. 1/4 Sec. 5-29-37
North Line of the S.W. 1/4 - N.E. 1/4 Section 5-29-37
S.W. Corner - N.E. 1/4 N.W. 1/4 Sec. 5-29-37
S.W. 1/4 Sec. 5-29-37
N.E. 1/4 Sec. 5-29-37

TRACT "B" 13.28 ACRES

ARTHUR L. DAY
CIVIL ENGINEER
MIAMI - FLORIDA

CALCULATED BY: R.C.
DRAWN BY: S.F.P.
CHECKED BY: J.B.
APPROVED BY: C.G.K.