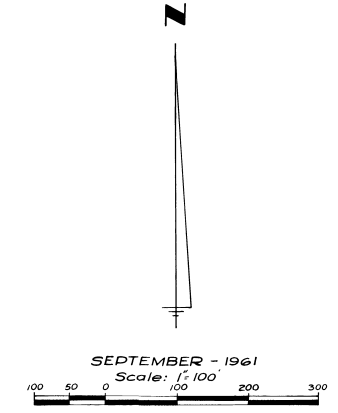
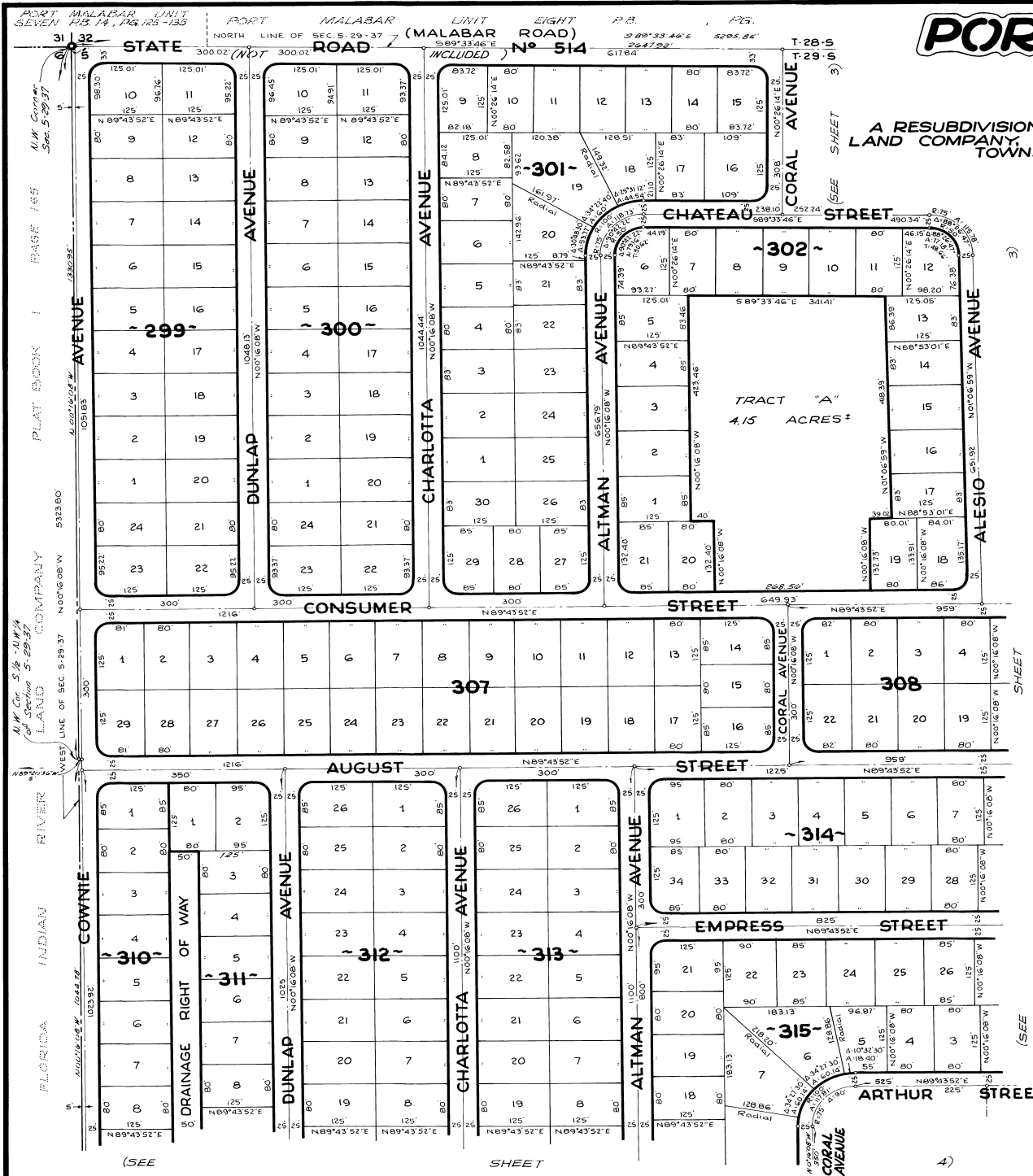


PORT MALABAR

UNIT NINE

PLAT BOOK 15
PAGE 2

A RESUBDIVISION OF PORTIONS OF THE FLORIDA INDIAN RIVER
LAND COMPANY, PLAT BOOK 1, PAGE 165, IN SECTIONS 4, 5 AND 6,
TOWNSHIP 29 SOUTH, RANGE 37 EAST
CITY OF PALM BAY
BREVARD COUNTY, FLORIDA



CALCULATED BY: R.G.
DRAWN BY: V.M.F.
CHECKED BY: J.B.
APPROVED BY: C.H.H.

ARTHUR L. DAY
CIVIL ENGINEER
MIAMI - FLORIDA