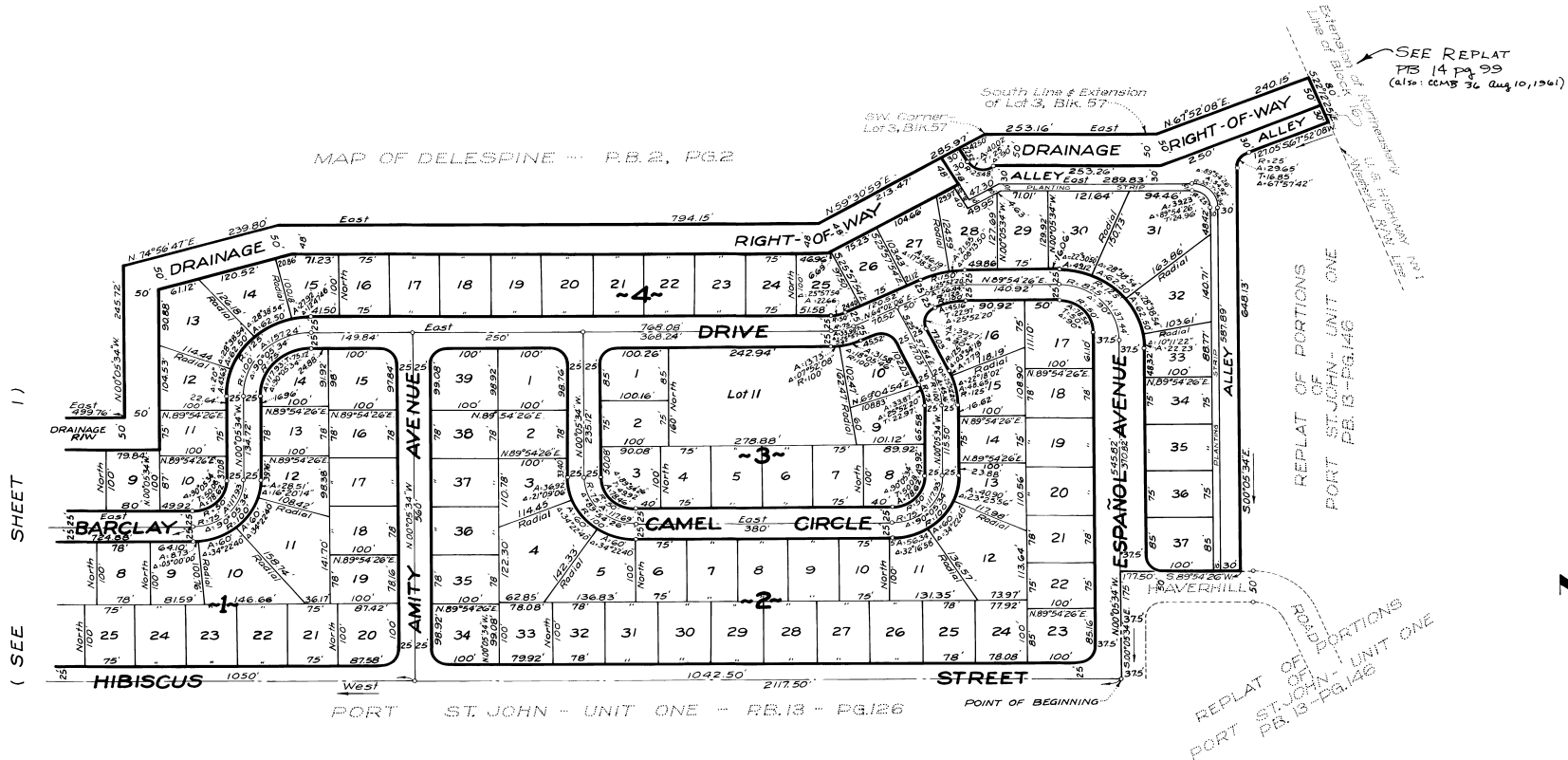


NORTH PORT ST. JOHN UNIT -- ONE

RESUBDIVISION OF A PORTION OF REPLAT OF PORTIONS OF
 PORT ST. JOHN UNIT ONE, PLAT BOOK 13, PAGE 146,
 AND
 A SUBDIVISION OF A PORTION OF MAP OF DELESPINE, PLAT BOOK 2, PAGE 2,
 SECTION 13, TOWNSHIP 23 SOUTH, RANGE 35 EAST, AND
 SECTION 18, TOWNSHIP 23 SOUTH, RANGE 36 EAST
 BREVARD COUNTY - FLORIDA

MAP OF DELESPINE -- P.B.2, PG.2



(SEE SHEET 1)

PORT ST. JOHN - UNIT ONE - P.B. 13 - PG. 126

REPLAT OF PORTIONS
 PORT ST. JOHN - UNIT ONE
 P.B. 13 - PG. 146

Filed
 AT 11:40 AM
 No.

DECEMBER - 1960
 Scale: 1" = 100'



ARTHUR L. DAY
 CIVIL ENGINEER
 MIAMI - FLORIDA

CALCULATED BY: *AW*
 DRAWN BY: *EL*
 CHECKED BY: *JB*
 APPROVED BY: *CAH*