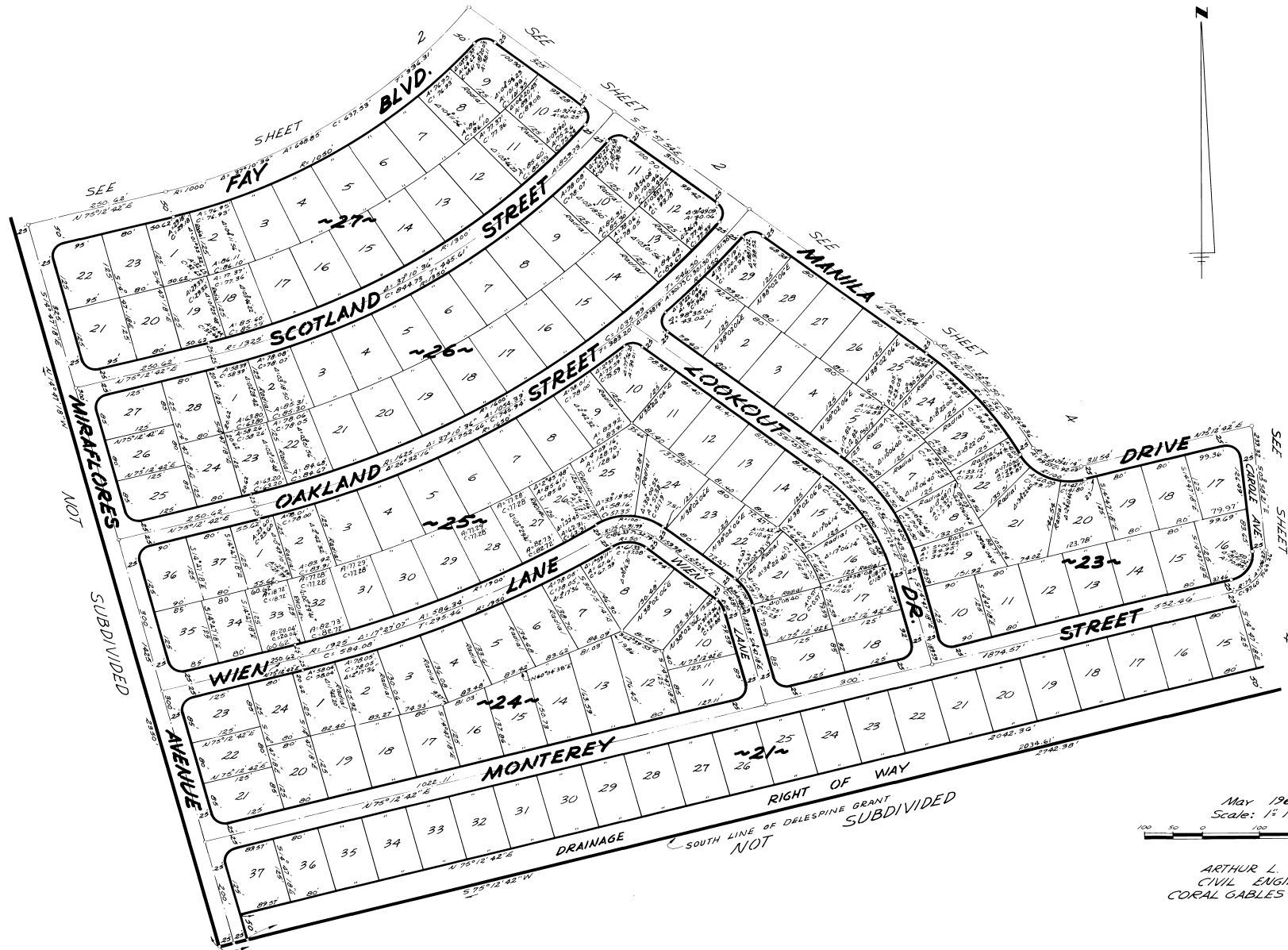


PORT ST. JOHN UNIT - - TWO

PLAT BOOK 14
AND PAGE 50

A SUBDIVISION OF PORTIONS OF SECTIONS 13, 23 & 24, TOWNSHIP 23 SOUTH, RANGE 35 EAST
BREVARD COUNTY, FLORIDA



May 1960
Scale: 1" = 100'

ARTHUR L. DAY
CIVIL ENGINEER
CORAL GABLES, FLORIDA

Calculated By: AWH
Drawn By: M.G.M.
Checked By: J.P.
Approved By: C.R.K.

SHEET 3 OF 4 SHEETS
164 LOTS THIS SHEET