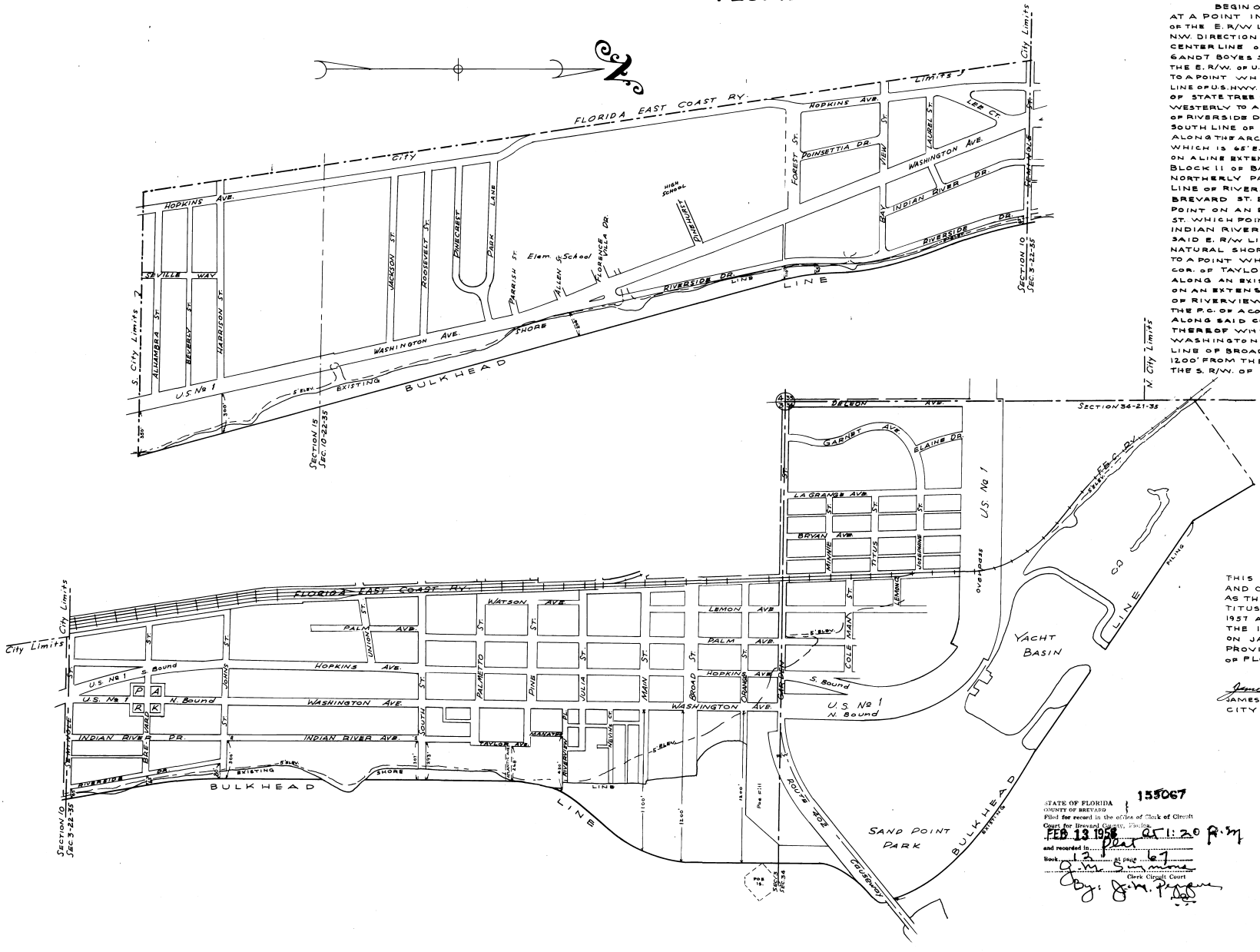


155067 *uniform*  
**BULKHEAD LINE**  
*City of Titusville*  
BREVARD COUNTY  
FLORIDA

DESCRIPTION:-  
BEING ON THE SOUTH CITY LIMIT LINE  
AT A POINT IN THE INDIAN RIVER WHICH IS 350' E.  
OF THE E. R/W LINE OF U.S. HWY. NO. 1; THENCE IN A  
NW. DIRECTION TO A POINT ON THE EXTENSION OF THE  
CENTER LINE OF DELESPINE ST. (VACATED) BETWEEN LOT  
6 AND 7 BOYES S/D. P.B. 2-40, WHICH POINT IS 300' E. OF  
THE E. R/W. OF U.S. HWY. NO. 1; THENCE IN A NW. DIRECTION  
TO A POINT WHICH IS 200' EASTERLY FROM THE E. R/W  
LINE OF U.S. HWY. NO. 1 ON THE S. LINE OF LOT 28 EXTENDED  
OF STATE TREE SHORES S/D. P.B. 8-49; CONTINUE NORTH-  
WESTERLY TO A POINT WHICH IS 110' E. OF THE E. R/W. LINE  
OF RIVERSIDE DRIVE ON THE EASTERLY EXTENSION OF THE  
SOUTH LINE OF LOT 2 STATE TREE SHORES S/D; THENCE  
ALONG THE ARC OF A CURVE TO THE RIGHT TO A POINT  
WHICH IS 65' E. OF THE E. R/W. LINE OF RIVERSIDE DRIVE  
ON A LINE EXTENDED EAST FROM THE N. LINE OF LOT 10  
BLOCK 11 OF BAYVIEW MANOR, P.B. 5-16; THENCE  
NORTHERLY PARALLEL TO AND 65' FROM THE E. R/W  
LINE OF RIVERSIDE DR. TO THE CENTER LINE OF  
BREVARD ST. EXTENDED EASTERLY; THENCE NW. TO A  
POINT ON AN EXTENSION OF THE N. R/W LINE OF ST. JOHN'S  
ST. WHICH POINT IS 500' FROM THE S. R/W. LINE OF  
INDIAN RIVER AVE.; THENCE N. AND PARALLEL TO  
SAID E. R/W. LINE (EXCEPT FOR MEANDERING THE  
NATURAL SHORELINE AT THE N. LINE DELESPINE GRANT)  
TO A POINT WHICH IS 268' MORE OR LESS, E. OF THE N.E.  
COR. OF TAYLOR AVE. AND ATLANTIC ST.; THENCE NE.  
ALONG AN EXISTING BULKHEAD LINE CONTINUE NE.  
ON AN EXTENSION OF SAID LINE TO THE S. R/W. LINE  
OF RIVERVIEW PLACE EXTENDED E. WHICH POINT IS  
THE P.C. OF A COMPOUND CURVE TO THE RIGHT THENCE  
ALONG SAID CURVE THROUGH ITS P.C. TO THE P.T.  
THEREOF WHICH IS 1200' S. OF THE E. R/W. LINE OF  
WASHINGTON AVE. ON AN EXTENSION OF THE S. R/W  
LINE OF BROAD ST.; THENCE N. PARALLEL TO AND  
1200' FROM THE E. R/W. LINE OF WASHINGTON AVE. TO  
THE S. R/W. OF S.R. 402; THENCE NE. ALONG SHORE LINE  
TO THE EXISTING BULKHEAD LINE,  
CONTINUE NW. ALONG BULKHEAD LINE  
TO THE END OF EXISTING PILING, NW.  
OF TITUSVILLE YACHT BASIN;  
THENCE NW. AND PARALLEL TO THE  
CHANNEL OF THE INLAND WATER-  
WAY, TO A LINE WHICH IS PERPENDICULAR  
TO SAID CHANNEL AND EXTENDS NE.  
FROM THE NORTHERN MOST POINT OF  
THE CITY PROPERTY IN SECTIONS 34-21-35.

THIS IS TO CERTIFY THAT THIS IS A TRUE  
AND CORRECT COPY OF THE MAP ADOPTED  
AS THE BULKHEAD LINE IN THE CITY OF  
TITUSVILLE, BY ORDINANCE ON DECEMBER 10,  
1957 AND APPROVED BY THE TRUSTEES OF  
THE INTERNAL IMPROVEMENT FUND,  
ON JANUARY 14, 1958, UNDER THE  
PROVISIONS OF CHAPTER 57-362, LAWS  
OF FLORIDA, ACTS OF 1957.

*James R. Stewart*  
JAMES R. STEWART  
CITY CLERK-MANAGER



155067  
STATE OF FLORIDA  
COUNTY OF BREVARD  
Filed for record in the office of Clerk of Circuit  
Court for Brevard County, Florida  
**FEB 13 1958** 2:20 P.M.  
and recorded in the public records of said county  
Book \_\_\_\_\_ Page \_\_\_\_\_  
*James R. Stewart*  
Clerk Circuit Court

BULKHEAD LINE, CITY OF TITUSVILLE IN ACCORDANCE WITH CHAPTER 57-362 LAWS OF FLORIDA, ACTS OF 1957	
APPROVED BY:-	
DRAWN BY: N.H. Loudon DATE: 12/1/57	FOR: CITY OF TITUSVILLE
SCALE: 1"=400'	
ORIGINAL MAP FROM: TOPOGRAPHIC SURVEY MAP CITY OF TITUSVILLE	
BLACK AND ASSOCIATES, INC., ENGINEERS	