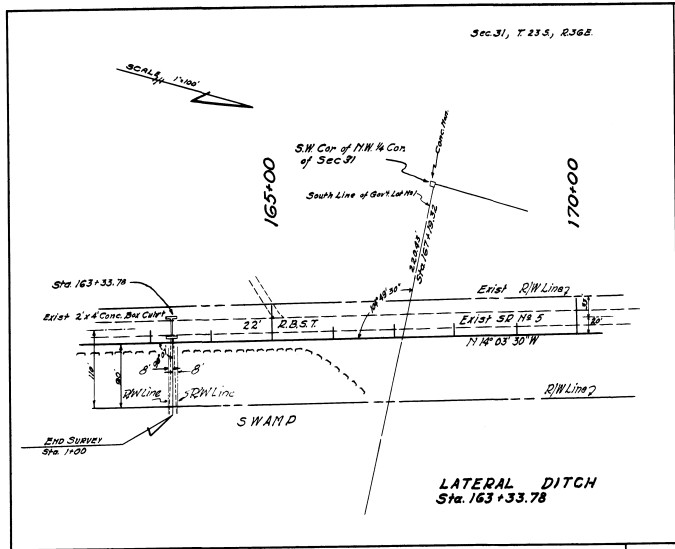
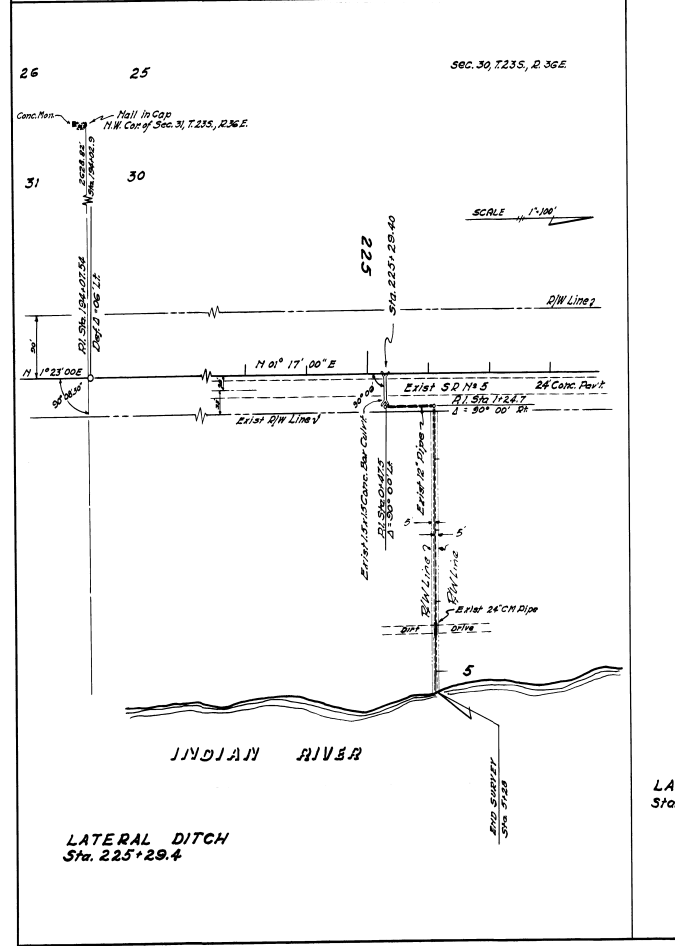


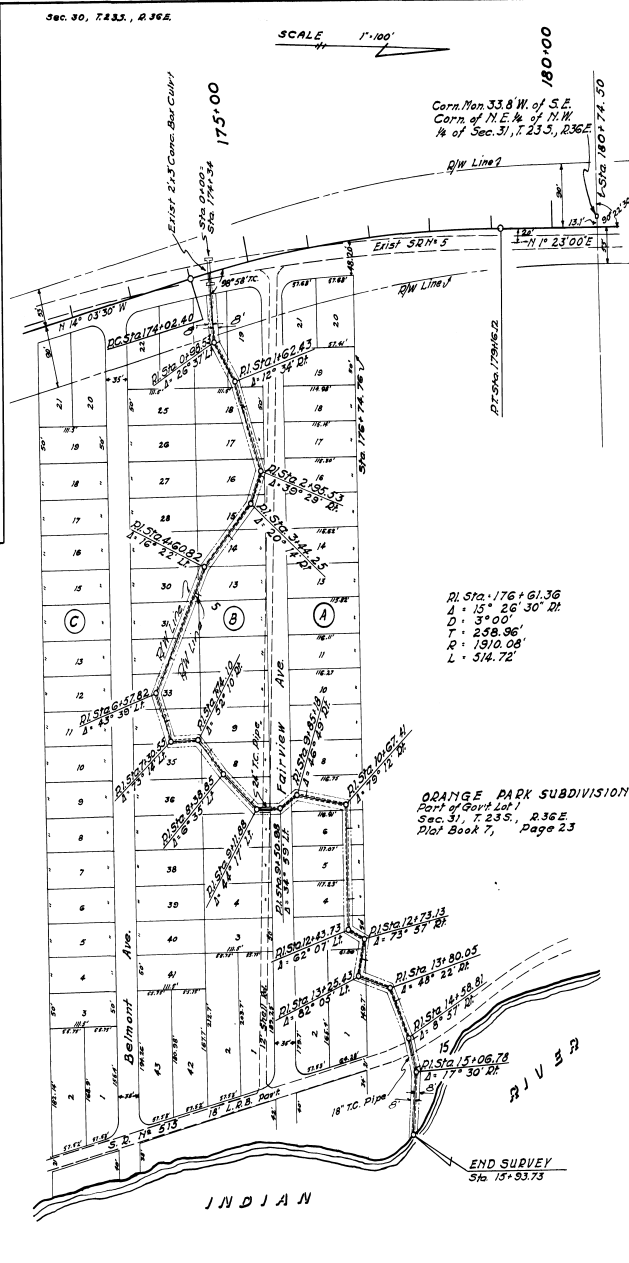
FED. ROAD DIV. No.	STATE	SEC. AND JOB No.	FISCAL YEAR	SHEET No.	TOTAL SHEETS
3	FLA.	7002-177		1	



LATERAL DITCH  
Sta. 163+33.78

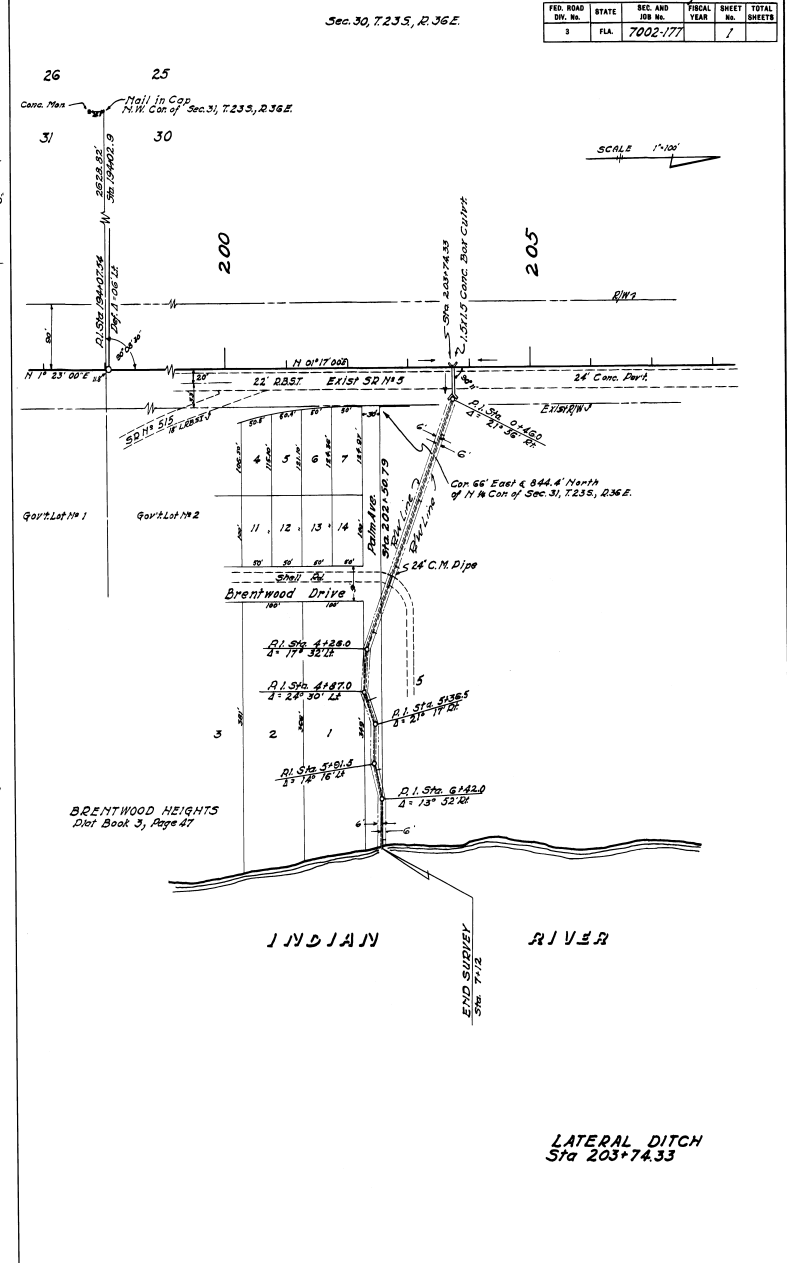


LATERAL DITCH  
Sta. 225+29.4



ORANGE PARK SUBDIVISION  
Part of Govt. Lot 1  
Sec. 31, T. 23 S., R. 36 E.  
Plat Book 7, Page 23

LATERAL DITCH  
Sta. 174+34



BRENTWOOD HEIGHTS  
Plat Book 3, Page 47

LATERAL DITCH  
Sta. 203+74.33

131101  
Accepted for files and recorded in the Public Records of Brevard County Florida this 7 day of April, A.D. 1957 in Plat Book 12, Page 11  
at 2:30 p.m.  
M. S. Simmons  
Clerk of the Circuit Court  
Brevard County, Florida

THIS IS TO CERTIFY that the within and attached sheets number one (1) and two (2) inclusive, constitute a true copy of the official Right of Way map showing location and survey by the State Road Department of Florida for a portion of State Road 3, designated as Section 7002 in Brevard County, Florida.  
The property outlined in RED ink on the said sheets has been visited by the State Road Department of Florida, pursuant to the provisions of Section 341.59 Florida Statutes of 1951 and the provisions of the Florida Statutes of 1951 and other instruments.  
IN WITNESS WHEREOF, we have hereunto set our hands and affixed the seal of the State Road Department of Florida at Tallahassee, Florida, this 4th day of APRIL, A.D. 1957.  
Ralph Davis  
Director State Road Department of Florida

STATE OF FLORIDA STATE ROAD DEPARTMENT			
<b>RIGHT OF WAY MAP</b>			
SECTION No. 7002-177			
ROAD No. 3		Brevard COUNTY	
SCALE 1"=100'	NAME	DATE	
DRAWN	RV		
TRACED	RV		
INCHES			
REVISED			
REVISED			
APPROVED BY Ralph Davis Director State Road Department of Florida			