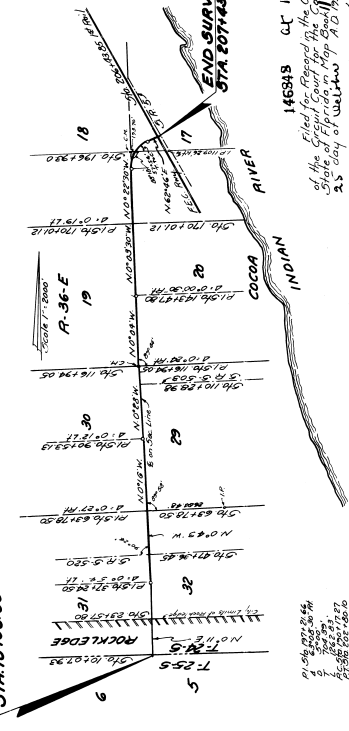


22-21-36

BEGIN SURVEY
STA. 10+00.00



145945
 11:11:11
 Filed for Record in the Office of the Clerk
 of the Circuit Court for the County of Brevard
 at Tallahassee, Florida, on the 23rd day of October, A.D. 1957.

No. Richard H. Simpson, as Chairman of the
 State Road Department of the State of Florida, and
 Department of Highways of the State of Florida, certify
 that this map is an accurate and correct copy of the
 original map on file in the office of the State Road
 Department of the State of Florida, and that the
 map is a true and correct copy of the original map
 on file in the office of the State Road Department
 of the State of Florida, and that the map is a true
 and correct copy of the original map on file in the
 office of the State Road Department of the State
 of Florida.

[Signature]
 Chairman State Road Department

[Signature]
 Secretary State Road Department

[Signature]
 State Highway Engineer

Date: August 3, 1953

[Signature]
 Clerk of Circuit Court
 Brevard County, Florida

See Book AB-5-563 Permit number.

TITUSVILLE BEACHWAY ESTATES

A SUBDIVISION LYING IN SECTION 22, TOWNSHIP 21 SOUTH, RANGE 36 EAST
 BREVARD COUNTY, FLORIDA

RADER AND ASSOCIATES
 111 N.E. 2ND, AVENUE
 MIAMI 32, FLORIDA

SCALE: 1"=100'
 0 20 40 60 80 100

SHEET 1 OF 3 SHEETS
 ORDER NO. 2344
 JULY 1956

Sec. NW 1/4 of S 1/4 of S 1/4 of NW 1/4 of Sec. 22-21-36

SCALE: 1"=100'

North Line of S 1/4 of S 1/4 of NW 1/4 of Sec. 22-21-36

West Line of NW 1/4 of Sec. 22-21-36

ENGINEER'S NOTE:
 © Indicates Monument Reference
 Monument.

15	16	17	18	19	20	21	22	23	24	25	26	27	28	29	30	31	32	33	34	35	36
15	16	17	18	19	20	21	22	23	24	25	26	27	28	29	30	31	32	33	34	35	36
15	16	17	18	19	20	21	22	23	24	25	26	27	28	29	30	31	32	33	34	35	36
15	16	17	18	19	20	21	22	23	24	25	26	27	28	29	30	31	32	33	34	35	36
15	16	17	18	19	20	21	22	23	24	25	26	27	28	29	30	31	32	33	34	35	36
15	16	17	18	19	20	21	22	23	24	25	26	27	28	29	30	31	32	33	34	35	36
15	16	17	18	19	20	21	22	23	24	25	26	27	28	29	30	31	32	33	34	35	36
15	16	17	18	19	20	21	22	23	24	25	26	27	28	29	30	31	32	33	34	35	36
15	16	17	18	19	20	21	22	23	24	25	26	27	28	29	30	31	32	33	34	35	36
15	16	17	18	19	20	21	22	23	24	25	26	27	28	29	30	31	32	33	34	35	36
15	16	17	18	19	20	21	22	23	24	25	26	27	28	29	30	31	32	33	34	35	36
15	16	17	18	19	20	21	22	23	24	25	26	27	28	29	30	31	32	33	34	35	36
15	16	17	18	19	20	21	22	23	24	25	26	27	28	29	30	31	32	33	34	35	36
15	16	17	18	19	20	21	22	23	24	25	26	27	28	29	30	31	32	33	34	35	36
15	16	17	18	19	20	21	22	23	24	25	26	27	28	29	30	31	32	33	34	35	36
15	16	17	18	19	20	21	22	23	24	25	26	27	28	29	30	31	32	33	34	35	36
15	16	17	18	19	20	21	22	23	24	25	26	27	28	29	30	31	32	33	34	35	36
15	16	17	18	19	20	21	22	23	24	25	26	27	28	29	30	31	32	33	34	35	36
15	16	17	18	19	20	21	22	23	24	25	26	27	28	29	30	31	32	33	34	35	36
15	16	17	18	19	20	21	22	23	24	25	26	27	28	29	30	31	32	33	34	35	36
15	16	17	18	19	20	21	22	23	24	25	26	27	28	29	30	31	32	33	34	35	36
15	16	17	18	19	20	21	22	23	24	25	26	27	28	29	30	31	32	33	34	35	36
15	16	17	18	19	20	21	22	23	24	25	26	27	28	29	30	31	32	33	34	35	36
15	16	17	18	19	20	21	22	23	24	25	26	27	28	29	30	31	32	33	34	35	36
15	16	17	18	19	20	21	22	23	24	25	26	27	28	29	30	31	32	33	34	35	36
15	16	17	18	19	20	21	22	23	24	25	26	27	28	29	30	31	32	33	34	35	36
15	16	17	18	19	20	21	22	23	24	25	26	27	28	29	30	31	32	33	34	35	36
15	16	17	18	19	20	21	22	23	24	25	26	27	28	29	30	31	32	33	34	35	36
15	16	17	18	19	20	21	22	23	24	25	26	27	28	29	30	31	32	33	34	35	36
15	16	17	18	19	20	21	22	23	24	25	26	27	28	29	30	31	32	33	34	35	36
15	16	17	18	19	20	21	22	23	24	25	26	27	28	29	30	31	32	33	34	35	36
15	16	17	18	19	20	21	22	23	24	25	26	27	28	29	30	31	32	33	34	35	36
15	16	17	18	19	20	21	22	23	24	25	26	27	28	29	30	31	32	33	34	35	36
15	16	17	18	19	20	21	22	23	24	25	26	27	28	29	30	31	32	33	34	35	36
15	16	17	18	19	20	21	22	23	24	25	26	27	28	29	30	31	32	33	34	35	36
15	16	17	18	19	20	21	22	23	24	25	26	27	28	29	30	31	32	33	34	35	36
15	16	17	18	19	20	21	22	23	24	25	26	27	28	29	30	31	32	33	34	35	36
15	16	17	18	19	20	21	22	23	24	25	26	27	28	29	30	31	32	33	34	35	36
15	16	17	18	19	20	21	22	23	24	25	26	27	28	29	30	31	32	33	34	35	36
15	16	17	18	19	20	21	22	23	24	25	26	27	28	29	30	31	32	33	34	35	36
15	16	17	18	19	20	21	22	23	24	25	26	27	28	29	30	31	32	33	34	35	36
15	16	17	18	19	20	21	22	23	24	25	26	27	28	29	30	31	32	33	34	35	36
15	16	17	18	19	20	21	22	23	24	25	26	27	28	29	30	31	32	33	34	35	36
15	16	17	18	19	20	21	22	23	24	25	26	27	28	29	30	31	32	33	34	35	36
15	16	17	18	19	20	21	22	23	24	25	26	27	28	29	30	31	32	33	34	35	36
15	16	17	18	19	20	21	22	23	24	25	26	27	28	29	30	31	32	33	34	35	36
15	16	17	18	19	20	21	22	23	24	25	26	27	28	29	30	31	32	33	34	35	36
15	16	17	18	19	20	21	22	23	24	25	26	27	28	29	30	31	32	33	34	35	36
15	16	17	18	19	20	21	22	23	24	25	26	27	28	29	30	31	32	33	34	35	36
15	16	17	18	19	20	21	22	23	24	25	26	27	28	29	30	31	32	33	34	35	36
15	16	17	18	19	20	21	22	23	24	25	26	27	28	29	30	31	32	33	34	35	36
15	16	17	18	19	20	21	22	23	24	25	26	27	28	29	30	31	32	33	34	35	36
15	16	17	18	19	20	21	22	23	24	25	26	27	28	29	30	31	32	33	34	35	36
15	16	17	18	19	20	21	22	23	24	25	26	27	28	29	30	31	32	33	34	35	36
15	16	17	18	19	20	21	22	23	24	25	26	27	28	29	30	31	32	33	34	35	36
15	16	17	18	19	20	21	22	23	24	25	26	27	28	29	30	31	32	33	34	35	36
15	16	17	18	19	20	21	22	23	24	25	26	27	28	29	30	31	32	33	34	35	36
15	16	17	18	19	20	21	22	23	24	25	26	27	28	29	30	31	32	33	34	35	36
15	16	17	18	19	20	21	22	23	24	25	26	27	28	29	30	31	32	33	34	35	36
15	16	17	18	19	20	21	22	23	24	25	26	27	28	29	30	31	32	33	34	35	36
15	16	17	18																		