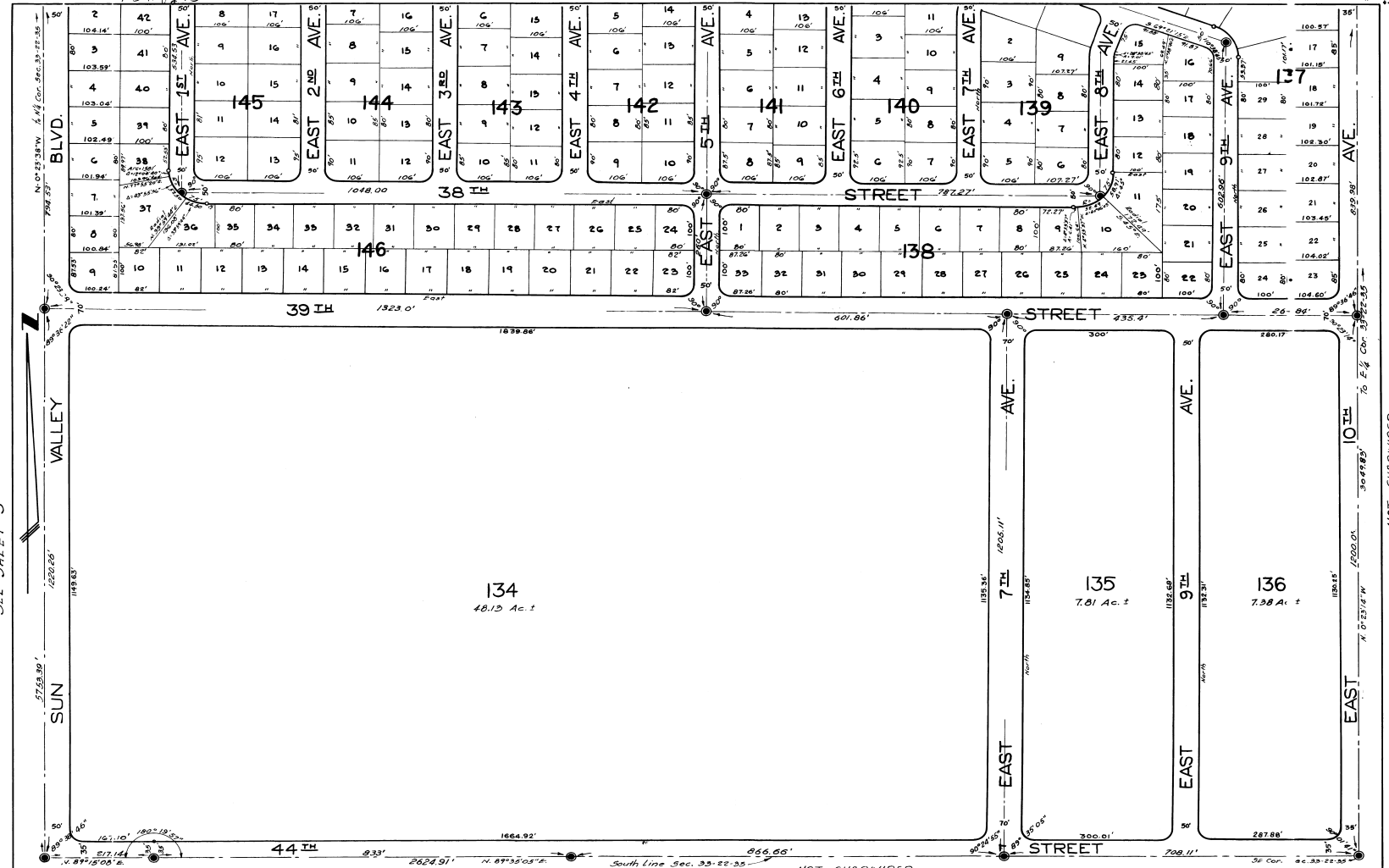


PB 11 no 73

SEE SHEET 5



SEE SHEET 3

NOT SUBDIVIDED

Engineer's Note:
 All radii are 25 feet, unless otherwise indicated.
 Distances on corner lots are to the intersection of block lines extended, unless otherwise indicated.
 • Indicates Permanent Reference Monument.

DESCRIPTIVE -
 All of Section 33 - Township 22 South - Range 35 east - Brevard County, Florida.

DECLARATION -
 KNOW ALL MEN BY THESE PRESENTS - That Harry Lower and Elizabeth Lower, President and Secretary, respectively of SUN VALLEY, INC., a Florida Corporation, do hereby accept and dedicate this plat and the streets thereon to the public for general use.
 WITNESSE WHEREOF, we have hereunto set our hands and signatures this 21 day of May 1956. SUN VALLEY, INC.

By Harry Lower President
 Attest Elizabeth Lower Secretary

ACKNOWLEDGEMENT -
 STATE OF MICHIGAN - Before me this day personally appeared HARRY LOWER and ELIZABETH LOWER, President and Secretary, respectively of Sun Valley, Inc., a Florida Corporation, known to me to be the persons who executed the foregoing instrument and acknowledged the same to be their free act and deed for the purposes therein set forth.
 WITNESSE My hand and notarial seal this 22 day of May 1956.

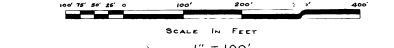
APPROVAL -
 My Commission expires March 1, 1960
 This plat is approved by the Board of County Commissioners of Brevard County, Florida this 21 day of May, 1956.

By Frank J. [Signature] Chairman
 Attest [Signature] Clerk

112395 40 3130 f. 7.
 This plat is approved for record and filed in Plat Book 11 - page 68 to 70 of the Public Records of Brevard County, Florida this 21 day of May, 1956.
 By [Signature] Clerk of the Circuit Court

SURVEYOR'S CERTIFICATE -
 We hereby certify that the attached is a true and accurate plat of the lands herein described and that permanent reference monuments have been found or set as shown this 3rd day of July, 1956.

Rader and Associates
 By [Signature]
 Registered Engineer A.P.I.C.
 Registered Surveyor A.P.I.C.
 State of Florida.



OR - ER NO. 1891
 MAY 1956



A SUBDIVISION OF
 SECTION 33, 22 S R35E,
 BREVARD COUNTY, FLORIDA.

RADER AND ASSOCIATES =
 SHEET 6 OF 6 SHEETS