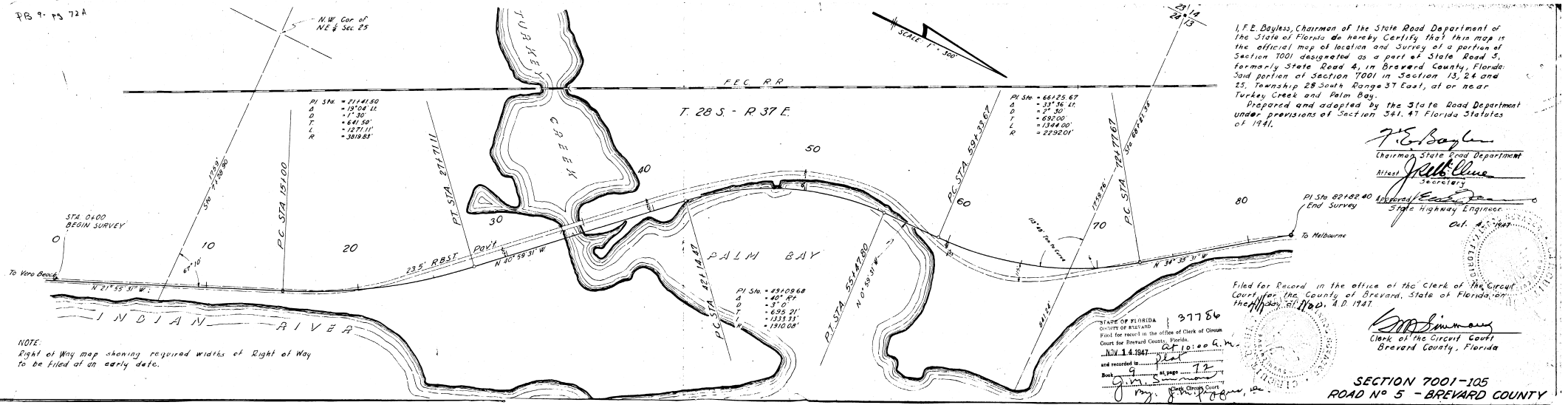


FB 9-75 72A



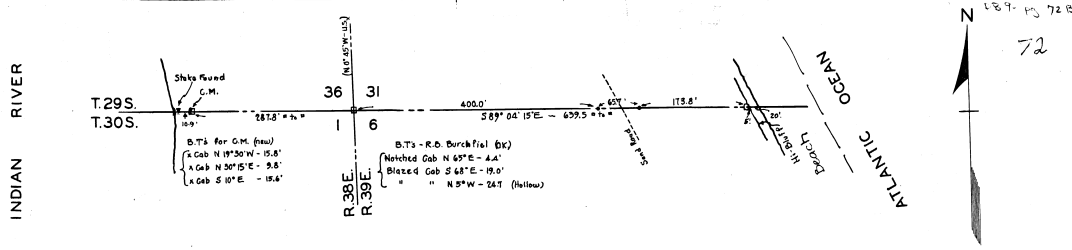
I, F.E. Bayless, Chairman of the State Road Department of the State of Florida do hereby Certify that this map is the official map of location and Survey of a portion of Section 7001 designated as a part of State Road 5, formerly State Road 4, in Brevard County, Florida: Said portion of Section 7001 in Section 13, 24 and 25, Township 28 South Range 37 East, at or near Turkey Creek and Palm Bay. Prepared and adopted by the State Road Department under provisions of Section 341.47 Florida Statutes of 1941.

F.E. Bayless
Chairman, State Road Department
Nilest *John C. Linn*
Secretary
Robert E. ...
State Highway Engineer
Ch. E. ...

Filed for Record in the office of the Clerk of the Circuit Court for the County of Brevard, State of Florida, on the 14th day of May, A.D. 1947.

STATE OF FLORIDA
COUNTY OF BREVARD
Filed for record in the office of Clerk of Circuit Court for Brevard County, Florida.
MAY 14 1947
and recorded in ...
Book ... at page ...
Clerk Circuit Court
John C. Linn

SECTION 7001-105
ROAD NO 5 - BREVARD COUNTY



I hereby certify that Concrete Monuments have been set as indicated on the above sketch and that the Bearing Trees both new and old are correct according to my best information and belief. All bearings on lines are true bearings.---

July 31st 1947
F.P. Shuster
County Surveyor
Brevard County, Fla.

CONCRETE MONUMENTS
FOR
BREVARD COUNTY
T. 29 & 30S. R. 38 & 39 E.

MAR 29 1948
STATE OF FLORIDA
COUNTY OF BREVARD
Filed for record in the office of Clerk of Circuit Court for Brevard County, Florida.
MAR 29 1948 at 3:20 p.m.
and recorded in ...
Book ... at page ...
Clerk Circuit Court
John C. Linn

062047