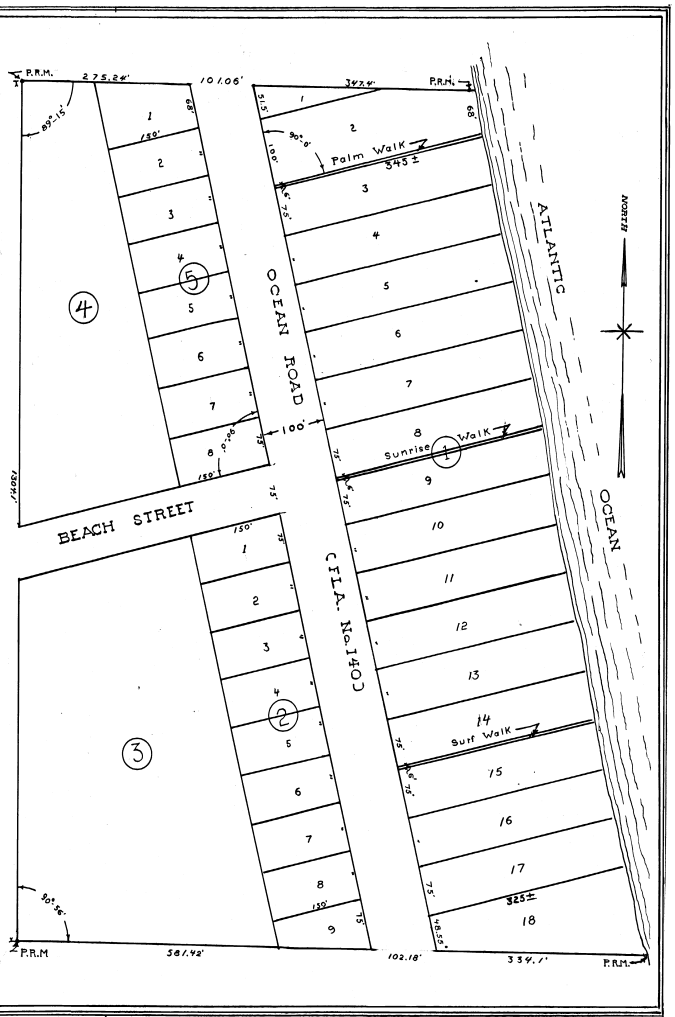


DL 9-7-6

See PA 9 pg 52



PLAT NUMBER ONE.
OCEAN SHORE SUBDIVISION
GLEASON LAND CORPORATION

BEING A SUBDIVISION OF
EAU GALLE FLORIDA.
 BEING A SUBDIVISION OF GOVERNMENT LOT 7, SECTION 24, TOWNSHIP 27 SOUTH,
 RANGE 37 EAST, BREVARD COUNTY FLORIDA.
 Scale 1" = 100'
 J.O. Wickham, Reg. Eng. 1103 and Surveyor #160 Fla.
 Jan. 1939.

STATE OF FLORIDA
 COUNTY OF BREVARD
 I, J. O. Wickham, Civil Engineer, No. 1103, do hereby certify that the above and foregoing is a true and correct copy of the original plat filed in my office on this 21st day of January, A.D. 1939.

J. O. Wickham
 J. O. Wickham

STATE OF FLORIDA
 COUNTY OF BREVARD
 I, J. O. Wickham, Civil Engineer, No. 1103, do hereby certify that the above and foregoing is a true and correct copy of the original plat filed in my office on this 21st day of January, A.D. 1939.

STATE OF FLORIDA
 COUNTY OF BREVARD
 I, J. O. Wickham, Civil Engineer, No. 1103, do hereby certify that the above and foregoing is a true and correct copy of the original plat filed in my office on this 21st day of January, A.D. 1939.

KNOW ALL MEN BY THESE PRESENTS, that I, J. O. Wickham, Civil Engineer, No. 1103, do hereby certify that the above and foregoing is a true and correct copy of the original plat filed in my office on this 21st day of January, A.D. 1939.

IN WITNESS WHEREOF, Gleason Land Corporation has caused its name to be signed by its President, J. O. Wickham, and its name to be printed on this 21st day of January, A.D. 1939.

Gleason Land Corporation
 By J. O. Wickham, President
 State of Florida
 County of Brevard

STATE OF FLORIDA
 COUNTY OF BREVARD
 I HEREBY CERTIFY THAT ON THIS 21st day of January, A.D. 1939, I, J. O. Wickham, Civil Engineer, No. 1103, do hereby certify that the above and foregoing is a true and correct copy of the original plat filed in my office on this 21st day of January, A.D. 1939.

Subscribed and sworn to before me at Eau Gallie, Brevard County, Florida the day and year last above written.

STATE OF FLORIDA
 COUNTY OF BREVARD
 I, J. O. Wickham, Civil Engineer, No. 1103, do hereby certify that the above and foregoing is a true and correct copy of the original plat filed in my office on this 21st day of January, A.D. 1939.

Notary Public State of Florida
 Board of County Commissioners