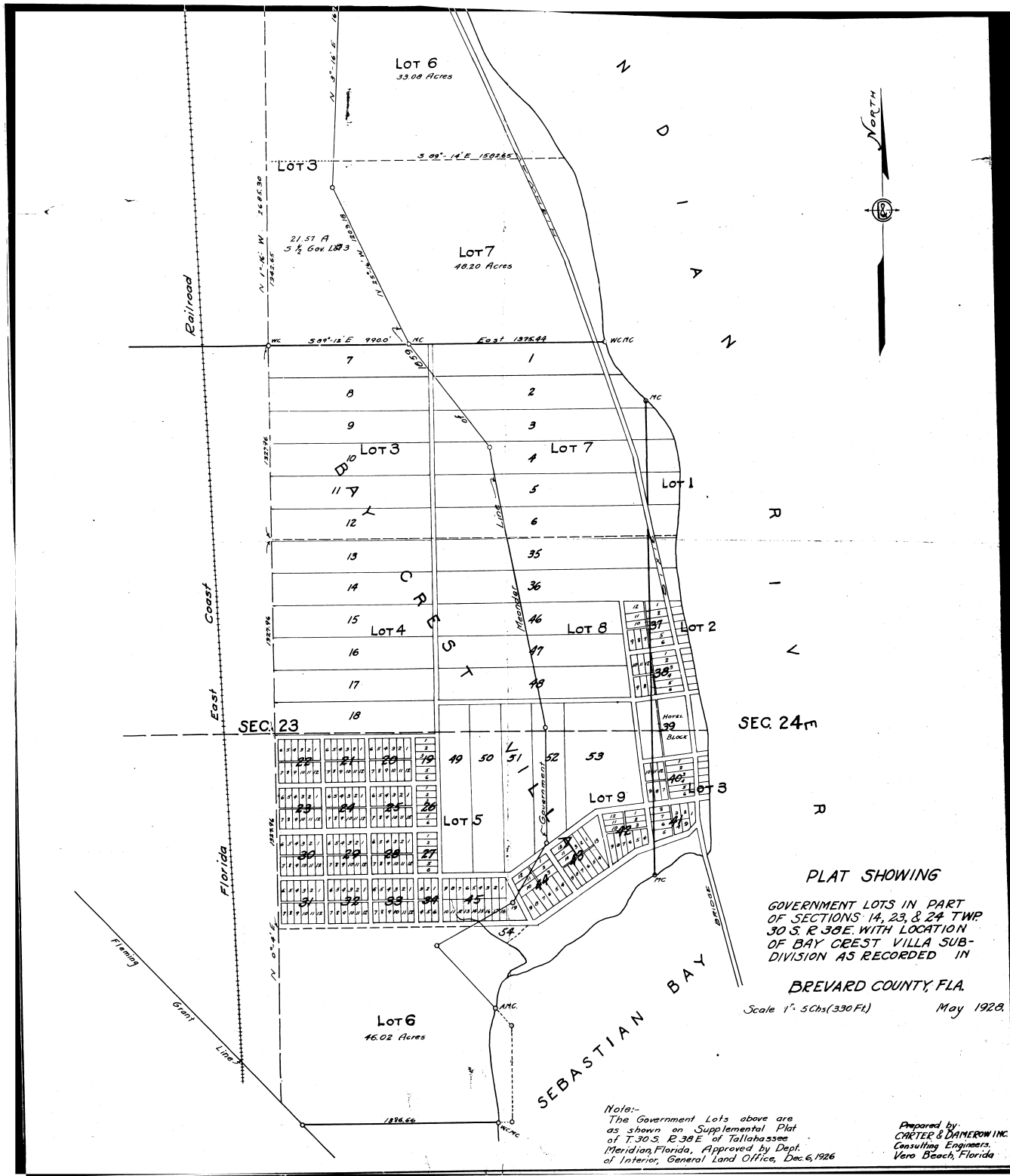


Lot 3
 Fleming Grant 200133



PLAT SHOWING
 GOVERNMENT LOTS IN PART
 OF SECTIONS 14, 23, & 24
 TWP 30 S. R. 38 E. WITH LOCATION
 OF BAY CREST VILLA SUB-
 DIVISION AS RECORDED IN
 BREVARD COUNTY, FLA.
 Scale 1" = 5 Chs (330 Ft) May 1928.

Note:-
 The Government Lots above are
 as shown on Supplemental Plat
 of T. 30 S. & R. 38 E. of Tallahassee
 Meridian, Florida, Approved by Dept.
 of Interior, General Land Office, Dec. 6, 1926

Prepared by:
CARTER & DAMERON INC.
 Consulting Engineers,
 Vero Beach, Florida