

CANOVA BEACH

Section "B"

Brevard County Florida.

See PB 10 Pg 9
Pg 71

11

STATE OF FLORIDA
County of Brevard
Filed for record in the office of Clerk of Circuit
Court for Brevard County, Florida.

APR 26 1928 5:00 P.M.
and recorded in Plat
Book 8 at page 12

N.T. Frossher
By J.S. Brooks
County Clerk

DESCRIPTION
Beginning at the North West corner of the S.E. 1/4 of the N.W. 1/4 of Section 13 Twp. 27 South Range 37 East Tallahassee Meridian Brevard County State of Florida, a. P.R.M. thence due East 25 feet to a stake which is the initial Point of the Survey of this Plat, thence; South 01°30'-30" East 130.85 feet to a concrete Monument which is on the North side of Eau Gallie Blvd., thence due East along the North side of said Boulevard 2025.156 feet to a stake at N.W. Line, thence; North 13°-05' 36" W. 328.88 feet thence due West 1956.85 feet to a concrete Monument thence; South 01°30'-30" East 189.887 feet to the point of commencement (Initial Point)

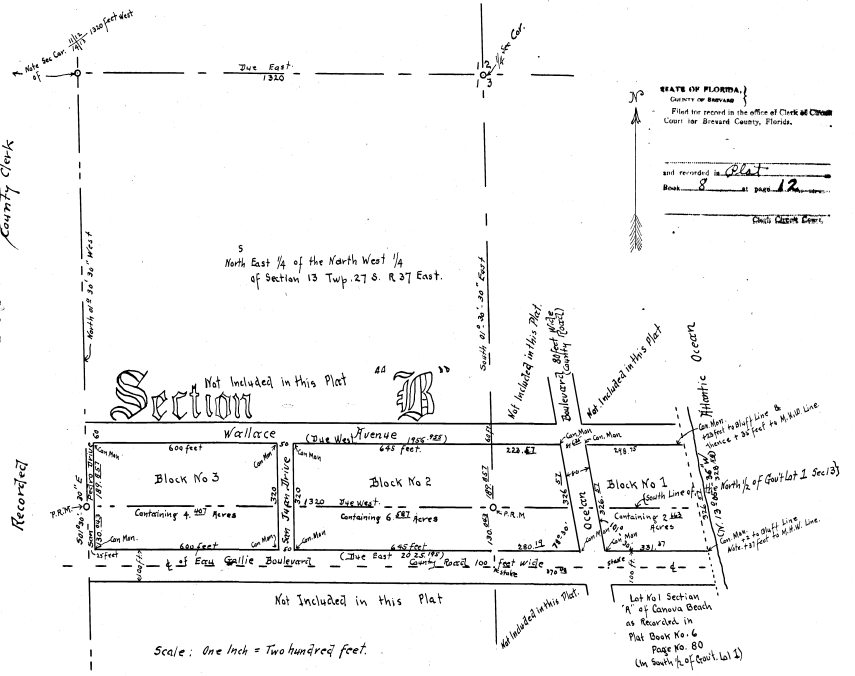
DEDICATION
Know all men by these presents that we Carlos F. Canova Pres. and Irene H. Canova Secy. as duly authorized representatives of the stockholders of the Canova Beach Inc. have caused the lands embraced in this Plat to be known as "Canova Beach Section B" and that the streets as shown on said Plat are hereby dedicated to the use of the public.
Signed and sealed in the presence of
Minnie C. Rogers
Charles F. Canova Pres.
Irene H. Canova Secy.

ACKNOWLEDGEMENT
STATE OF FLORIDA
COUNTY OF BREVARD
On this day the 24th of April 1928, before me a Notary Public in and for said State, at large, personally came the above named Carlos F. Canova Pres. and Irene H. Canova Secy. known to me to be the duly authorized representatives of the Canova Beach Inc. and who executed the above dedication and acknowledged the same to be their free act and deed and that the seal hereto attached is the Corporate Seal of the said Corporation.

My Commission Expires March 11-1929
Notary Public
CERTIFICATE
I hereby certify that the Plat hereon delineated is a correct one and represents the Survey as was made upon the ground and suitable concrete monuments were placed at all points indicated upon the face of the plat
Signed Carlos F. Canova Reg. C.E. No. 358
April, 24th 1928.



Approved for the County Commissioners
N.T. Frossher
County Clerk



Scale: One Inch = Two hundred feet.

ENGINEERS NOTE This Plat is a subdivision of the North 130.85 feet of the South East quarter of the North West 1/4 and the North 150.85 feet of the South half of Gov't Lot 1 and the South 189.887 feet of the North West 1/4 and the South 189.887 feet of the North half of Gov't Lot 1 all in Section 13 Township No 27 South Range 37 East Tallahassee Meridian Brevard County State of Florida.