

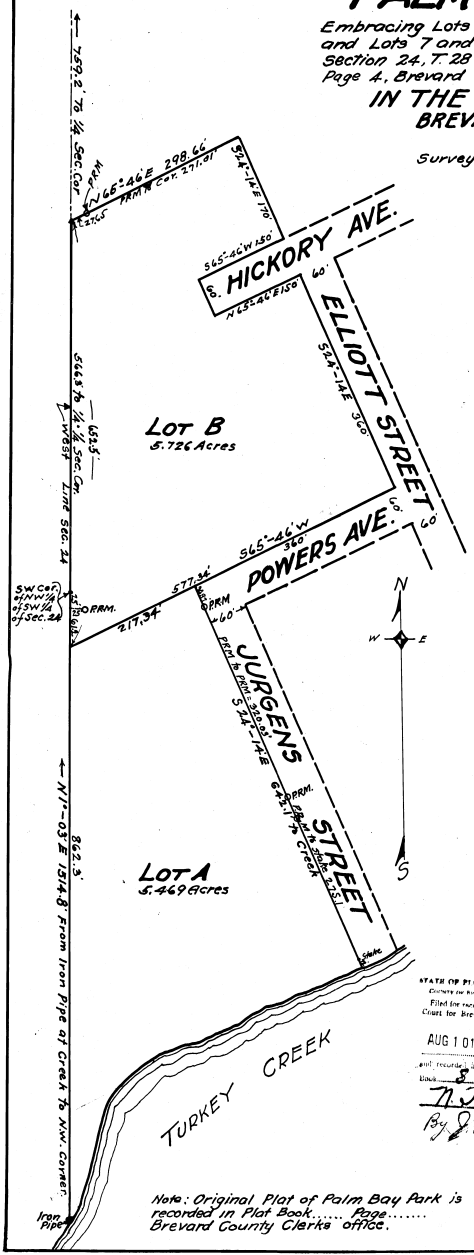
# RESUBDIVISION OF PALM BAY PARK

Embracing Lots 'A' and 'B', all of Blocks 12 and 13, and Lots 7 and 8 of Block 14, of the Plat of TILLMAN, Section 24, T. 28 S., R. 37 E. (Recorded in Plat Book 2, Page 4, Brevard County Records)

## IN THE TOWN OF PALM BAY BREVARD COUNTY, FLORIDA

SCALE: 1" = 100'  
Surveyed Nov. 1925, Resubdivided July 1928

B.F. Johnston, Engr.  
Melbourne, Fla.



**Dedication**  
Know all men by these Presents, That we, Joseph Grzesik and Helen Grzesik, his wife, lawful owners of the above described land, have caused said land to be resubdivided into two Lots designated 'Lot A' and 'Lot B', respectively, as shown on this Plat, and we do hereby dedicate this Plat to be known as 'Resubdivision of Palm Bay Park', and we do hereby dedicate the streets and avenues shown hereon to the perpetual use of the public.

In testimony whereof we have hereunto set our hands this 11th day of July, 1928.

Joseph Grzesik  
Helen Grzesik

Witnesses  
J.M. Simmons  
J.P. Hunter

State of Florida } S.S.  
County of Brevard }

I hereby certify that this day personally appeared before me a Notary Public in and for the County and State aforesaid, Joseph Grzesik and Helen Grzesik, his wife, well known to me, and known by me to be the persons described in, and who executed the foregoing Dedication of Resubdivision of Palm Bay Park, and acknowledged the execution thereof to be their free act and deed, and the said Helen Grzesik, wife of the said Joseph Grzesik, upon an examination taken by me separate and apart from her said husband, acknowledged that she executed said dedication for the purposes therein set forth freely and voluntarily, and without any constraint, compulsion, apprehension or fear of or from her said husband.

In testimony whereof witness my hand and official seal this 11th day of July, 1928.

J.M. Simmons  
Notary Public State of Florida at large  
My Commission expires Aug. 7, 1928.

**Engineer's Certificate**  
I hereby certify that I have surveyed the above described lands and plotted the same into Lots A and B, as shown hereon, and that this Plat of Resubdivision of Palm Bay Park is a correct representation of said lands, as surveyed by me, to the best of my knowledge and belief, and that Permanent Reference Monuments have been placed on said land as indicated on this Plat by the initials P.R.M., according to law.

Given under my hand at Melbourne, Florida, this 5th day of July, 1928.

B.F. Johnston  
Registered Civil Engineer  
State of Florida

Approved by the Town Commission of the Town of Palm Bay, Florida, this 2nd day of Aug. 1928.

Commissioners {  
A. J. ...  
A. L. Pollock

STATE OF FLORIDA  
County of Brevard  
Filed for record in the office of Clerk of Circuit Court for Brevard County, Florida.

AUG 1 0 1928 4:00 P.M.  
By J. S. ...  
N.J. ...

Note: Original Plat of Palm Bay Park is recorded in Plat Book ... Page ... Brevard County Clerk's office.

Approved for record this 10th day of August, 1928  
N.J. ...  
Recorded in Plat Book 8, Page 13, Brevard County Clerk's office.

12