

23

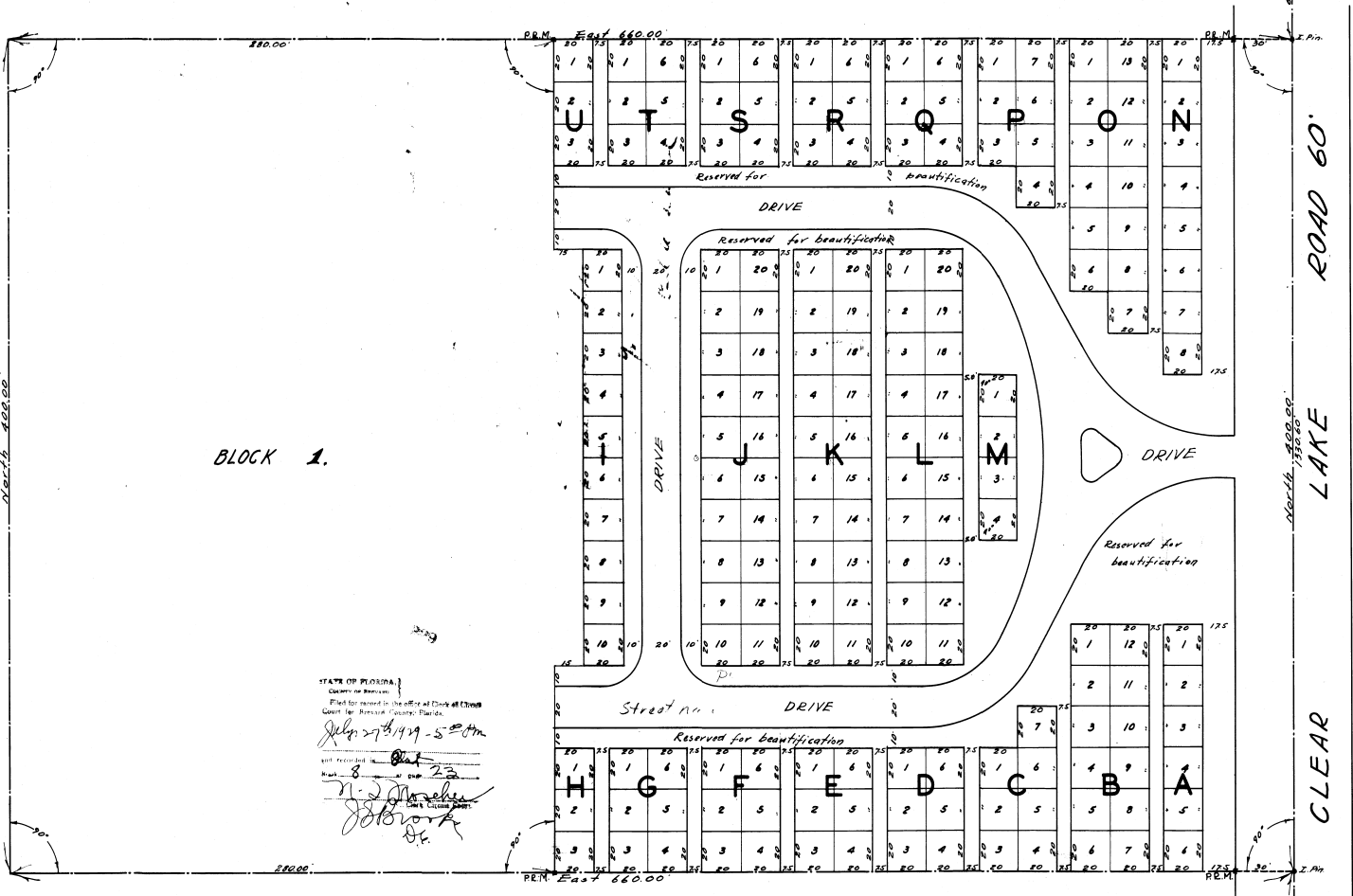
**MUNICIPAL CERTIFICATE**  
 This plat was approved by the City Council of the City of Cocoa, Brevard County, Florida, and State of Florida by motion passed of June 5, A.D. 1929.

*E. Johnson* Chairman Atty. Gen. *W. J. ...* Clerk

I HEREBY CERTIFY; that the annexed plat was surveyed and plotted under my direction and that the same is a true and correct copy thereof.

I further certify that Permanent Reference monuments have been set in the positions shown on said plat June 5, 1929. *Carl A. Schmidt*, Civil Engineer.

N.E. Corner S.E. 1/4 of N.E. 1/4 Section 30, T.24 S., R. 36 E.



BLOCK 1.

STATE OF FLORIDA  
 County of Brevard  
 Filed for record in the office of Clerk of Circuit Court for Brevard County, Florida by *Carl A. Schmidt* June 27, 1929 - 5:20 PM  
 Book 8 Page 23  
*W. J. ...*  
*W. J. ...*

KNOW ALL MEN BY THESE PRESENTS: That The Pinecrest Cemetery Co., a corporation existing under the Laws of Florida, has caused the lands shown upon and described in the caption of the annexed plat to be surveyed and platted under the name of PINECREST CEMETERY.

WHEREFORE, it is presented that the said plat be admitted to record in the office of the Clerk of the Circuit Court for Brevard County, Florida to be recorded in accordance with the Laws of said State.

IN WITNESS WHEREOF we have hereunto set our hands and seals this 10th day of June, A.D. 1929.

By *Carl M. Fay* President (Seal)  
*W. J. ...* Secretary (Seal)  
 Signed sealed and delivered in the presence of us.  
*W. J. ...* Witness  
*Marie Madia* Witness

# PINECREST CEMETERY

PART OF THE S.E. 1/4 of N.E. 1/4 SECTION 30, T.24 S., R. 36 E., CITY OF COCOA, BREVARD COUNTY, FLORIDA.  
 Begin on the east line of the S.E. 1/4 of the N.E. 1/4 of Section 30, T.24 S., R. 36 E. at a point which is 2900.00' North of the southeast corner thereof; thence due west 660.00' to a point; thence due north 400.00' to a point; thence due east 660.00' to a point on said east line of said S.E. 1/4 of the N.E. 1/4 Section 30; thence due south along said east line of said S.E. 1/4 of the N.E. 1/4 of Section 30, 400.00' to the point of beginning and containing 6.00 Acres of land.

Scale 1" = 30'  
 June 1929. *Carl A. Schmidt* Civil Engineer.

STATE OF FLORIDA  
 COUNTY OF BREVARD ss - I hereby certify that on this 10th day of June, A.D. 1929, before me personally appeared *Carl M. Fay* and *W. J. ...*, President and Secretary respectively of THE PINECREST CEMETERY CO., corporation existing under the Laws of Florida, to me well known to be the persons described in and who executed the foregoing instrument and solemnly acknowledged the execution thereof to be their free and voluntary act and deed for the uses and purposes therein mentioned and that they affixed thereto the official seal of said corporation.

Witness my hand and official seal at Cocoa, in the County of Brevard, State of Florida the day and year last aforesaid.  
*Marie Madia* Notary Public, State of Florida, My commission expires July 19, 1929

I, the undersigned Clerk of the Circuit Court of Brevard County, Florida, hereby certify that I have examined the foregoing plat and that it complies in conformity with all the requirements of Chapter 10, 275 of the Laws of Florida, Acts of 1925 and that this plat is filed for record this day of June, A.D. 1929 and recorded in Plat Book Page in the office of the Clerk of the Circuit Court of Brevard County, Florida.

*Clifford ...* Clerk of the Circuit Court, Brevard County

