

CANAVERAL BEACH PARK

A SUBDIVISION COMPRISING
GOVT. LOT 2 AND THE WEST 1/4 OF THE N.W. 1/4 OF SEC. 21
TWP. 23 S. R. 38 E., BREVARD CO. FLORIDA.

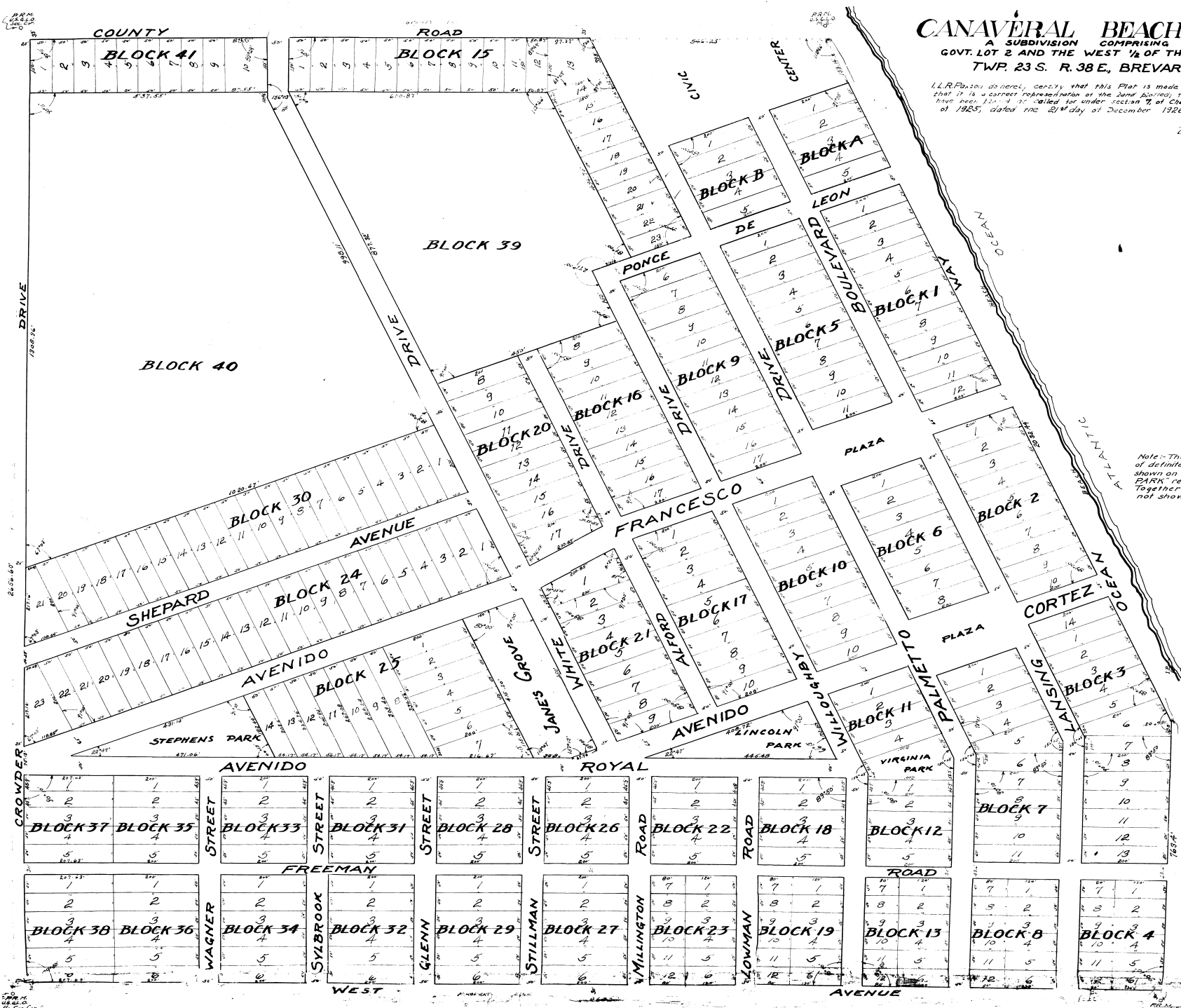
4

I, L.R. Paxton, do hereby certify that this Plat is made from an actual survey made by me, that it is a correct representation of the land planned, that the same are reference monuments there upon, and is called for under section 7, of Chapter 10275, of the Laws of Florida Act of 1925, dated the 21st day of December, 1925.

L.R. PAXTON, COUNTY SURVEYOR, BREVARD CO.

See PB 9 pg 38

Note: This Plat was made for the purpose of definitely locating certain Lots and Blocks shown on the Plat of CANAVERAL BEACH PARK recorded in Plat Book 3 Page 80. Together with additional Lots and Blocks not shown thereon.



PLAT BOOK 8
PAGE 4
L.R. PAXTON
COUNTY SURVEYOR
BREVARD COUNTY
FLORIDA