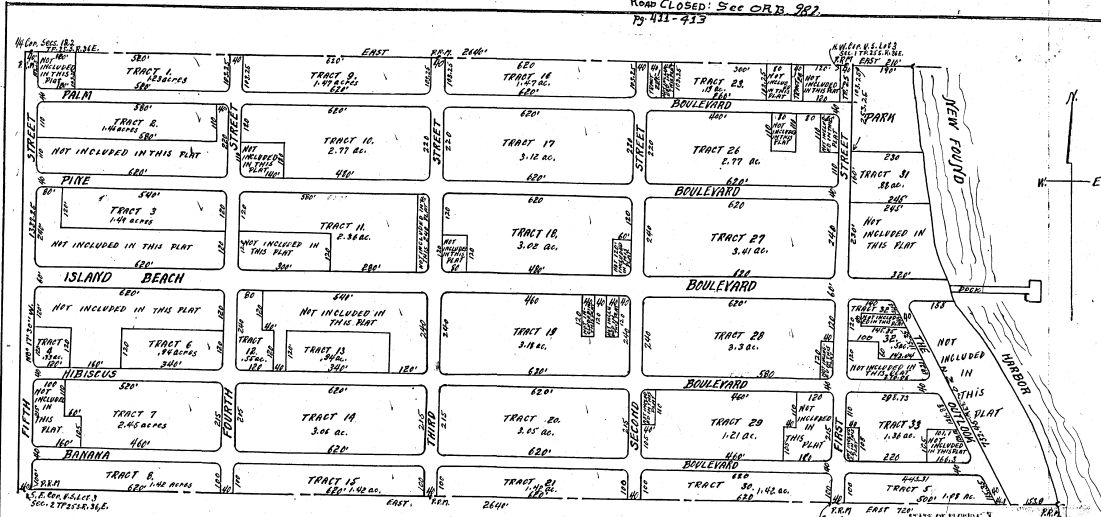


ROAD CLOSED: See ORB 987,  
79 411-413



**A RESUBDIVISION OF THE PLAT OF  
ISLAND BEACH, SHEET NO. ONE.**

AS RECORDED IN PLAT BOOK 9 AT PAGE 24.  
A SUBDIVISION OF SEC. 16 S.W. 1/4 AND SEC. 17 W. 1/2, SECTION 17 T. 25. S. R. 31 E.  
AND PART OF S.W. 1/4 SECTION 27, T. 25. S. R. 31 E.

SCALE 1" = 200'  
DECEMBER 1927

State of Florida  
County of Brevard  
I, Ray Beaman, President of Miami and Northern Realty Corporation, do hereby certify that the undersigned Miami and Northern Realty Corporation a duly organized under the laws of Florida have caused the lands shown herein to be resubdivided under the name of "A Beach of Island Beach Sheet No. One" and the said Miami and Northern Realty Corporation does hereby declare to the people of the State for proper purposes the Streets, Boulevards and Parks as shown on said Plat, reserving only its successors and assigns the possession or reversion thereof of over-adjacent lots of Public or Governmental lands shown on said Plat, and that the said plat is submitted for record in the office of the Clerk of Circuit Court of Brevard County, Florida, and is recorded in accordance with the laws of said State.  
In witness whereof the said Miami and Northern Realty Corporation has begun set its corporate seal and name through its President and Secretary at Tallahassee, Florida, this 20th day of December A.D. 1927.  
Signed: Ray Beaman President of Miami and Northern Realty Corporation  
Witness: J. R. Brooks

State of Florida  
County of Brevard  
I, the undersigned an officer duly authorized to administer oaths and take acknowledgments certify that on this day personally appeared before me, Alfred Bell and Emma Bell, President and Secretary respectively of the Miami and Northern Realty Corporation, each in his own name, who being duly sworn, depose and say that they are the President and Secretary of said Corporation, and solemnly acknowledged before me that they executed the foregoing declaration, by and with the authority of the Board of Directors of said Corporation.  
In Witness Whereof I have hereunto set my hand and official seal as Clerk of the County of Brevard and State of Florida, this 20th day of Dec. 1927.  
My Commission expires Dec 29, 1929  
J. R. Brooks  
Clerk of Circuit Court, State of Florida

State of Florida  
County of Brevard  
I, E. H. Lewis, Clerk of Circuit Court of Brevard County, Florida, hereby certify that I have examined the foregoing plat and that it complies in all particulars with the requirements of Chapter 10775 of the laws of Florida acts of 1925 and that this plat is filed for record in the office of the Clerk of Circuit Court in Plat Book 7 at Page 33 this 20th day of December A.D. 1927.

CLERK OF CIRCUIT COURT  
This plat is hereby approved in behalf of the Board of County Commissioners of Brevard County Florida by the undersigned who is thereof duly authorized this 20th day of December A.D. 1927.  
W. J. ...  
CLERK OF BOARD OF COUNTY COMMISSIONERS

E. H. Lewis do hereby certify that the plat herein was plotted from the properly marked plat of Island Beach, Sheet No. One, and that it has the same bearings and boundaries, dated this 20th day of December A.D. 1927.  
E. H. Lewis et al.

Beginnings of the S.E. Cor. of S.E. 1/4 S. 16, Sec. 27, T. 25 S. R. 31 E., Thence N. 77° 10' 14" W. 1331.85' to W. Cor. of Secs. 16 and 27, T. 25 S. R. 31 E., Thence S. 82° 14' 10" W. 1000.00' to New Point Harbor; Thence S. 82° 14' 10" W. 1330' to point of beginning; Thence N. 77° 10' 14" W. 1330' to point of beginning; Thence N. 77° 10' 14" W. 1330' to point of beginning; Thence S. 82° 14' 10" W. 1000.00' to W. Cor. of Sec. 27, T. 25 S. R. 31 E.

STREET CLOSING  
ORB 1064/777

PLATTED BY TOM BENSON 1927