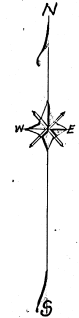
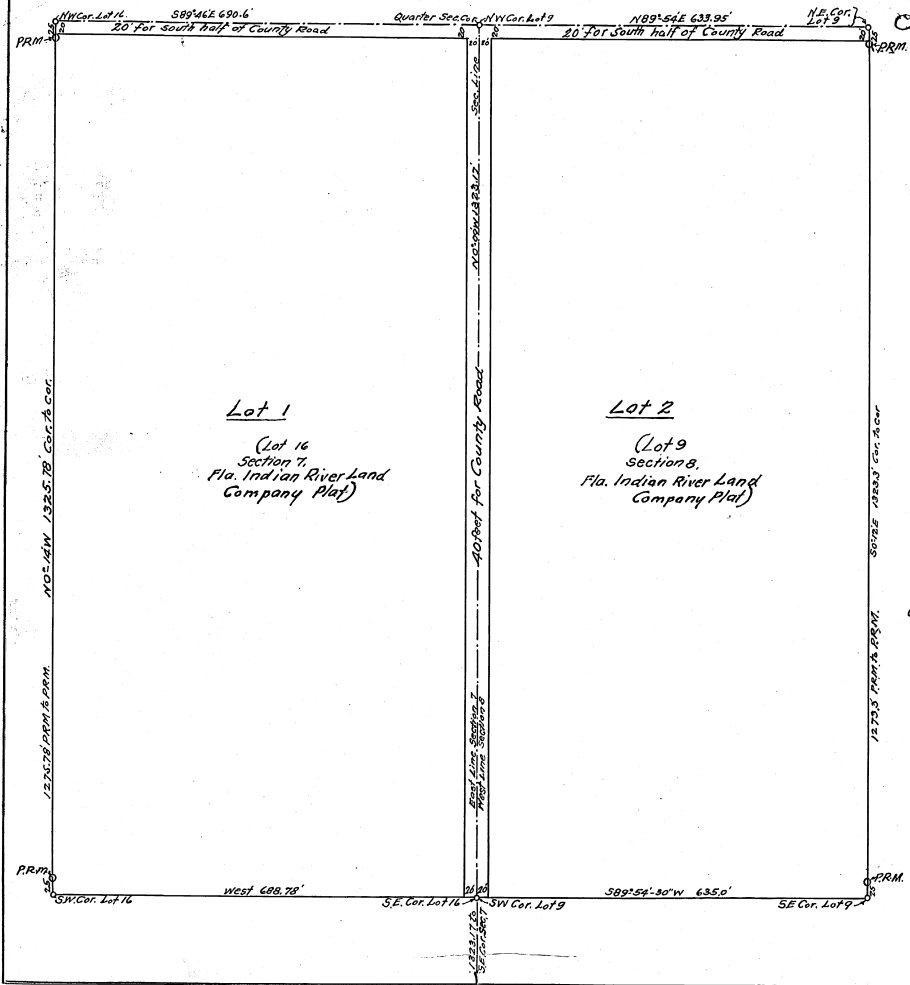


## REVISED PLAT OF PINE LAWN PARK

Being a Plat of Lot 16, Section 7, and Lot 9, Section 8, T28S, R37E,  
According to the Florida Indian River Land Company's Subdivision of said  
Sections, (Plat of which is filed in Plat Book 1, Page 164, Brevard County Records)  
BREVARD COUNTY, FLORIDA.

Note: This Plat supersedes and takes the place of the original Plat of Pine  
Lawn Park (filed in Plat Book 6, Page 66)

Scale: 1" = 100'  
October 1927  
B. F. Johnston, Engineer  
Melbourne, Fla.



Dedication 18

Know All Men by These Presents: That A. Charles Hartmann, owner of the above described lands, and Lillian Hartmann, his wife, have caused said lands to be surveyed and platted, as shown hereon, and do hereby adopt and dedicate this Revised Plat to supersede and take the place of the original plat of Pine Lawn Park (filed in Plat Book 6, Page 66, Brevard County Records) and we do hereby dedicate the roads shown hereon to the perpetual use of the Public.

In Testimony whereof we have hereunto set our hands this 18th day of Oct. 1927.

Walter R. Hendricks }  
Charles Hartmann }  
Lillian Hartmann }  
Witnesses

State of Massachusetts  
City, County of St. Louis

I hereby certify that on this day personally appeared before me a Notary Public in and for the State and County aforesaid, A. Charles Hartmann, and Lillian Hartmann, his wife, both well known to me, and known to me to be the persons described in and who executed the above dedication of the Revised Plat of Pine Lawn Park, and jointly acknowledged the execution thereof to be their free act and deed, and the said Lillian Hartmann, wife of the said A. Charles Hartmann, upon an examination made by me separately and apart from her said husband, acknowledged that she executed said dedication freely and voluntarily and without any restraint, compulsion, apprehension or fear of or from her said husband.

Witness my hand and official seal this 18th day of Oct. 1927.

Hermon Heane  
Notary Public State of Missouri  
My Commission expires Dec. 6th 1927



Engineer's Certificate

I hereby certify that the above described lands have been surveyed and platted by me, and that this Revised Plat of Pine Lawn Park correctly represents said lands to the best of my knowledge and belief, and that permanent reference monuments have been placed on said lands, as indicated hereon, according to law.

Given under my hand this 11th day of October 1927.

B. F. Johnston  
Registered Engineer, State of Florida

Approved for the Board of County Commissioners of Brevard County, Florida, this 3rd day of Oct. 1927

N. S. Grocher  
Clerk Brevard County Commissioners  
Brevard County Florida

STATE OF FLORIDA }  
COUNTY OF BREVARD }  
Filed for record in the office of Clerk of Circuit Court for Brevard County, Florida.

NOV 10 1927

and recorded in 18 at page 18

N. S. Grocher  
Clerk