

14

WEST MELBOURNE

SHEET NUMBER 2

A Subdivision of the S. 1/2 of Section 8, and the W 1/2 of the S.W. 1/4 of Section 9; T 28 S; R 36 E

BREVARD COUNTY, FLORIDA.

West Melbourne Development Company, (Inc.), Melbourne, Florida, Owner

Scale: 1 Inch = 200 Feet.

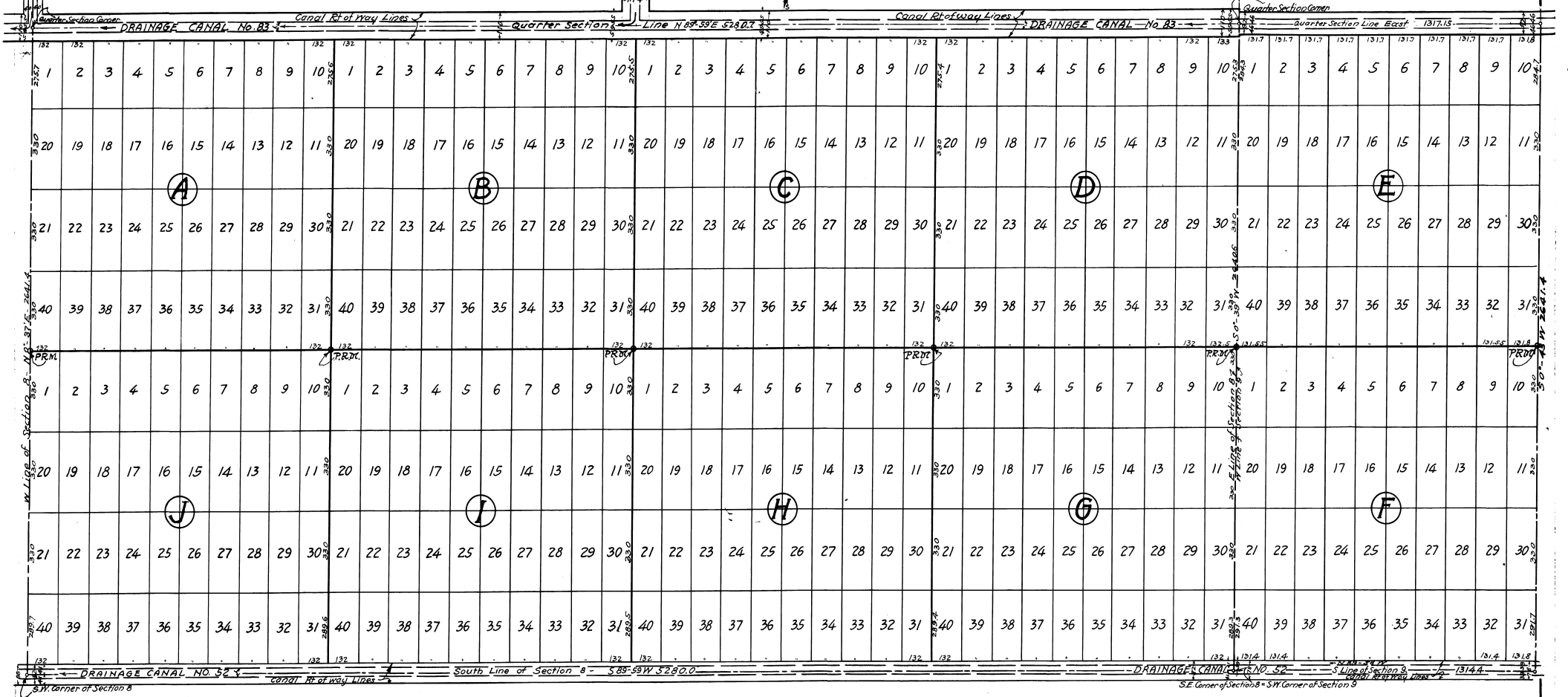
Oct. 26, 1925.

D. F. Johnston, Engineer
Melbourne, Fla.

Engineer's Notes: Each lot on this sheet contains approximately ONE ACRE, excepting those bordering on Drainage Canals, which lots are shortened half the width of canal Right of Way.
Bearings shown on boundary lines are referred to the center line of the Union Cypress Company's Railroad, which is assumed EAST-West. (see sheet 1)



4" P.M.
Plot 14
H. D. Goodwin
S. E. Hartman - B. G.



See sheet number one for dedications.