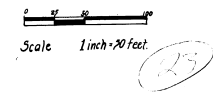


See P.B. 10 Pg 44
BLK. 7 MCATRD See O.B. 356 pg 447

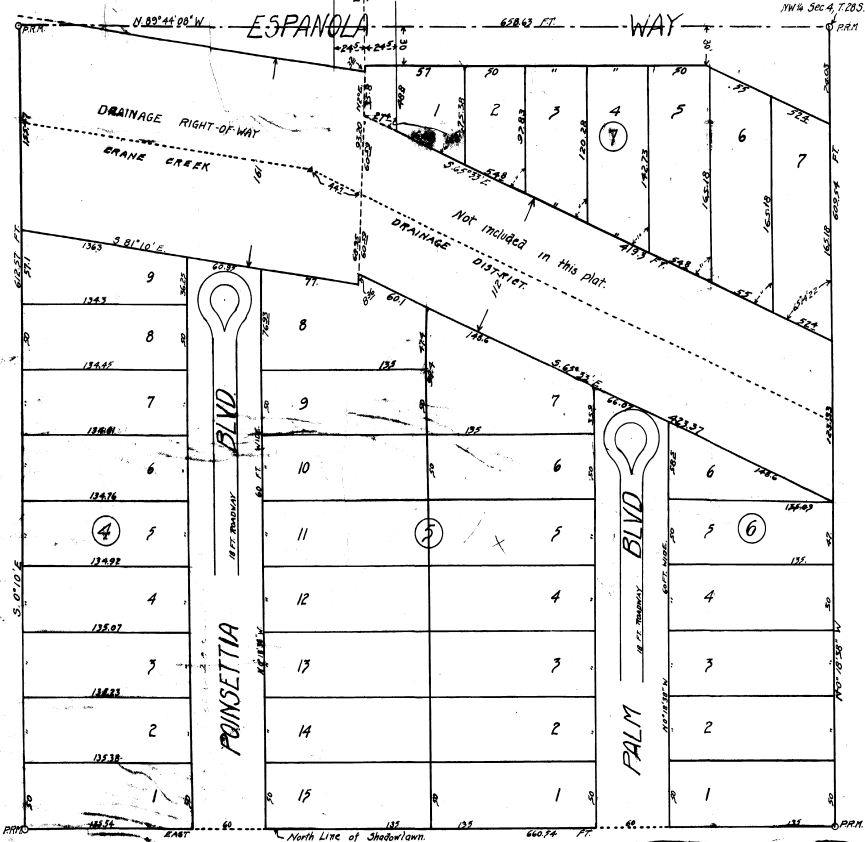


SHADOWLAWN # 2

A PORTION OF THE E 1/2 OF THE SW 1/4 OF THE NW 1/4
OF SECTION 4, T.28S. R.37E., CITY OF MELBOURNE,
BREVARD COUNTY, FLORIDA.

All dimensions are given in feet
and decimals thereof.

Place of Beginning
NE Cor. of the SW 1/4
NW 1/4 Sec. 4, T.28S. R.37E.



STATE OF FLORIDA
County of Brevard
Filed for record in the office of Clerk of Court
Court for Brevard County, Florida
NOV 2 1925 5:12 P.M.
and recorded in _____
Book _____
Page _____
W. J. Branch, Clerk of Court
G. P. Minter, Secy.

DEDICATION

Know All Men By These Presents, That W. J. Branch President and G. P. Minter Secretary, as duly authorized representatives of the stockholders of the Bennett Construction Company, have caused the land embraced in the annexed plat to be surveyed, laid out and platted, to be known as SHADOWLAWN #2, A portion of the E 1/2 of the SW 1/4 of the NW 1/4 of Section 4, T.28S. R.37E., City of Melbourne, Brevard County, Florida, and that the Streets as shown on said Plat are hereby dedicated to the use of the public.

Signed & Sealed in Presence of W. J. Branch Pres.
G. P. Minter Secy.

STATE OF FLORIDA,
County of Brevard) ss.
On this 1st day of November, 1925,
before me, a Notary Public in and for said County, personally came the above named W. J. Branch Pres. and G. P. Minter Secy, known to me to be the duly authorized representatives of the Bennett Construction Company, who executed the above dedication, and acknowledged the same to be their free act and deed, and that the seal hereto attached is the Corporate Seal of said Corporation.

Notary Public, Brevard Co. Fla.
My Commission expires Dec. 14, 1925

DESCRIPTION OF LAND PLATTED.

Beginning at the Northeast Corner of the SW 1/4 of the NW 1/4 of Section 4, T.28S. R.37E., and running thence N 89° 44' 08" W. 628.63 feet; thence S 01° 10' E. 612.71 feet; thence East 660.74 feet; thence N 01° 18' W. 602.74 feet to place of Beginning.

SURVEYOR'S CERTIFICATE.

I hereby certify that the plat hereon delineated is a correct one, and that permanent monuments consisting of concrete monuments 4 inches square, 24 inches long, have been planted at points marked "A" through "M" as thereon shown at all angles in the boundaries of the land platted.

W. J. Branch Surveyor.

MUNICIPAL CERTIFICATE

This plat was approved by the Common Council of the City of Melbourne at a meeting held Nov. 1, 1925.

ATTEST Joseph M. Meade Clerk
Councilmen W. J. Branch
G. P. Minter
A. L. ...

I further certify that this plat is a correct representation of the land platted, and that the monuments marked "A" through "M" comply with Sec. 7, Chapter 10278 (No. 35) Laws of Florida, Acts of 1925.

W. J. Branch, Surveyor.



S. F. A. S.