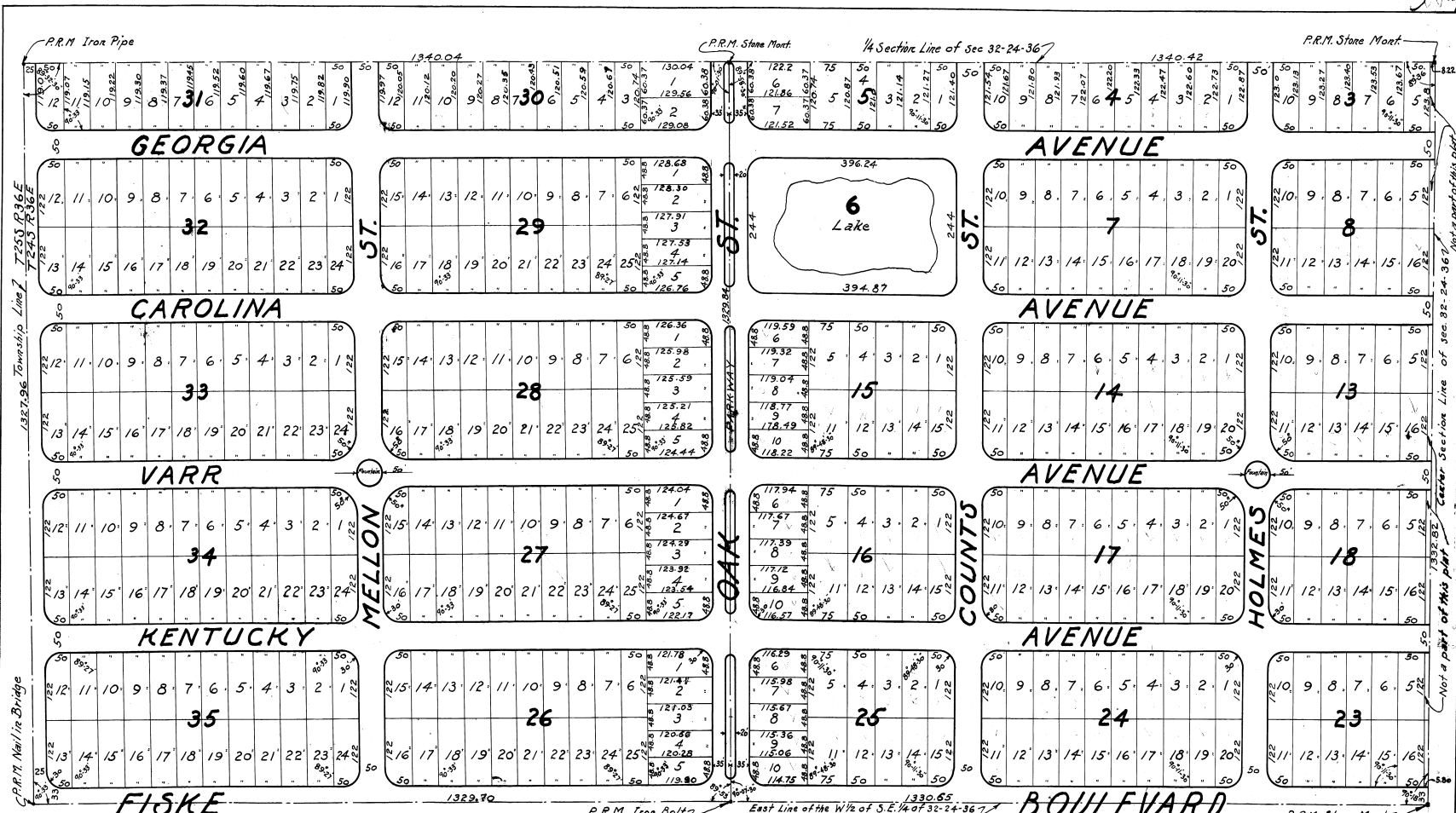


D 512

See P. B. 8 pgs. 37, 43, 45



KNOW ALL MEN BY THESE PRESENTS That the EASTERN HOUSING Co. have caused the attached plat of Virginia Park, being a subdivision of the W 1/2 of the S.E. 1/4 of section 32, Township 24 South, Range 36 East, Brevard County, Florida, to be made. The 3 foot easement on the rear of each lot as platted thereon, is dedicated to the use of the Public for the purpose of installation and maintenance of sewers, water and gas mains, electric light and telephone poles and conduits, and all streets as so located on this plat are likewise dedicated to the Public use, reserving to ourselves, our heirs and assigns, the reversion thereof, when discontinued by law.

In WITNESS WHEREOF We have hereunto set our hands and seals on this 21st day of October A. D. 1925

STATE OF FLORIDA
COUNTY OF BREVARD

I hereby certify that on this 21st day of October, A. D. 1925, before me personally appeared W. J. Shaughnessy and Chas. Egan respectively, President and 1st Secretary of the EASTERN HOUSING Co., a corporation under the laws of the State of Florida, to me well known to be the persons described in and who executed the foregoing dedication to the Public, and solemnly acknowledged the execution thereof to be their free act and deed as such officers for the uses and purposes therein mentioned and that they arrived hereunto the official seal of said corporation, and the said instrument is the act and deed of said corporation.

Witness my signature and official seal at _____ in the County of BREVARD and State of Florida, the day and year last aforesaid.

Virginia Park.
A SUBDIVISION OF W 1/2 - SE 1/4 OF SEC. 32-24-36
BREVARD COUNTY, FLORIDA.
Eastern Engineering & Const. Co.
Cocoa, Florida
October, 1925. Scale 1" = 100 ft.

Approved by the City of Rockledge, Brevard County, Florida.
Mayor of City of Rockledge, Florida
Attest John M. Seaman City Clerk

Approved by the County Commissioners of Brevard County, Florida.
Clerk, Board County Commissioners

I hereby certify that the attached plat of the West 1/2 of the S.E. 1/4 of section 32, Township 24 S., Range 36 E. is a true and correct map of such property as recently surveyed and platted by me, and that permanent reference monuments have been placed as indicated on this plat.
E. S. Buck, Licensed Surveyor No. 564

STATE OF FLORIDA,
County of Brevard.

Subscribed and sworn to before me on this 21st day of October, 1925.

J. H. M.
Notary Public



EASTERN HOUSING Co.
CORPORATE
COCOA
FLORIDA
SEAL
1925

Attest Chas. Egan
1st Secretary

Witness my signature and official seal at _____ in the County of BREVARD and State of Florida, the day and year last aforesaid.

John Shepard
Notary Public in and for the State of Florida, My Commission Expires August 11, 1927