

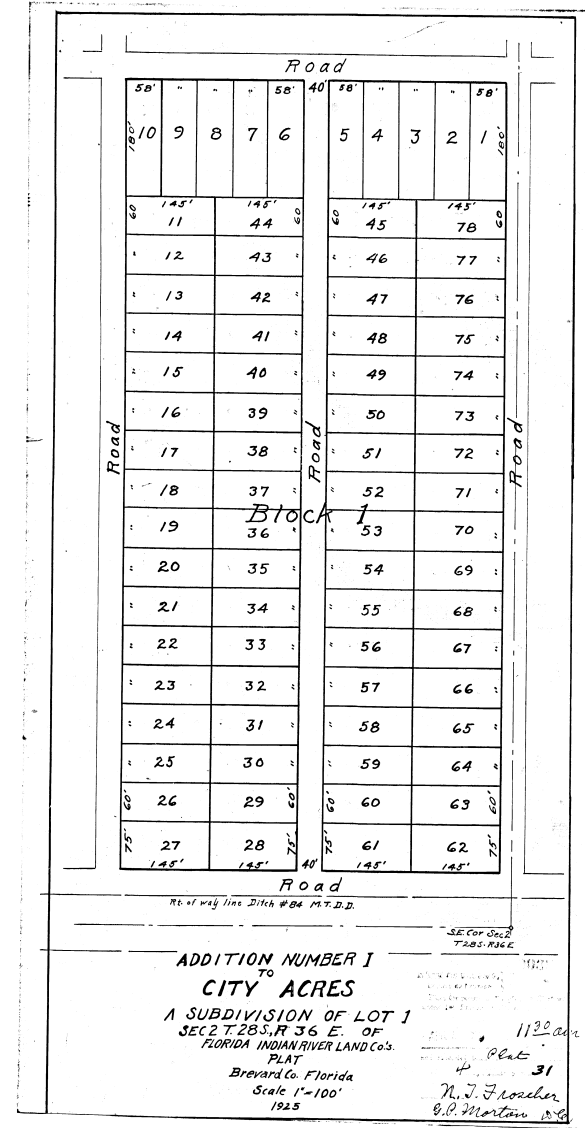
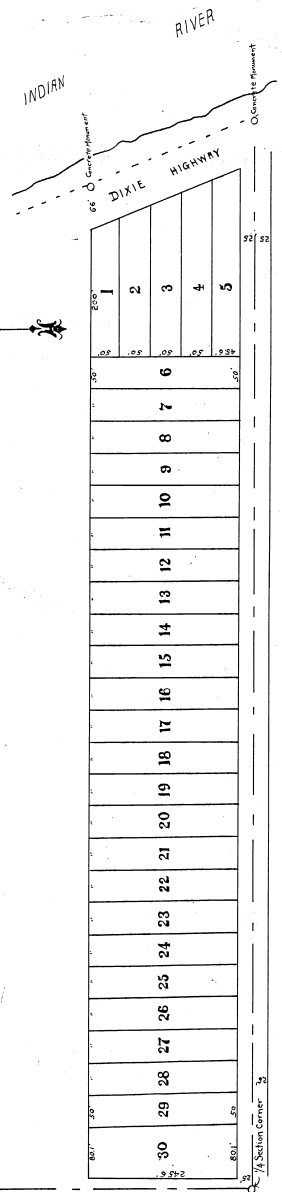
# SAUNDERS ADDITION TO Melbourne, Florida.

Being a Subdivision of the South 10 Acres of Gov't Lot 2,  
 Section 27 - Twp. 27 South - Range 37 East.

Scale One Inch = One Hundred Feet.

Charles F. Cannon, Reg. C.E.  
 10 27 23

120 Bk.  
 Plat 31  
 N. J. Froscher  
 G. B. Mortimer, D.C.



ADDITION NUMBER 1  
 TO  
 CITY ACRES  
 A SUBDIVISION OF LOT 1  
 SEC 27, T. 28 S., R. 36 E. OF  
 FLORIDA INDIAN RIVER LAND Co.'s  
 PLAT  
 Brevard Co. Florida  
 Scale 1"=100'  
 1925

1122 ac.  
 Plat 31  
 N. J. Froscher  
 G. B. Mortimer, D.C.