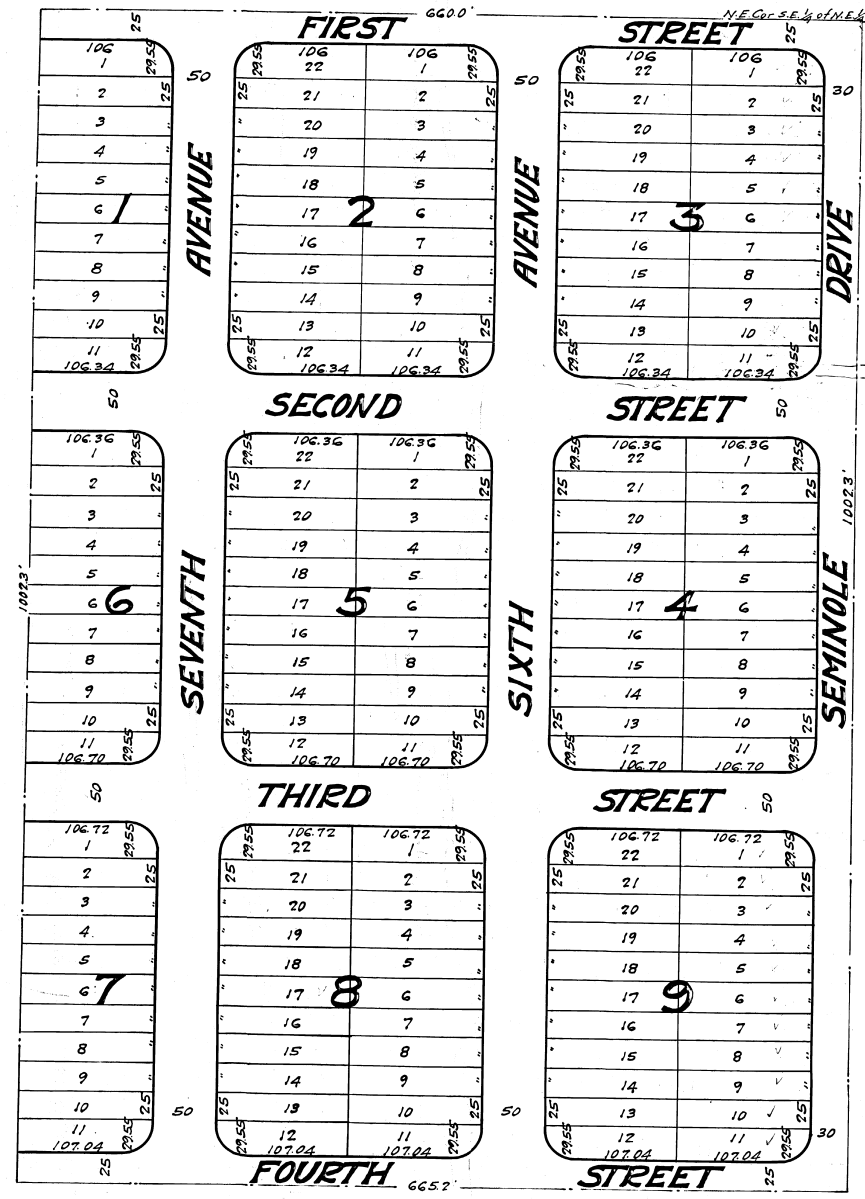


KNOW ALL MEN BY THESE PRESENTS:—
That Walter E. Plankenhorn has caused to be made the attached plat of Seminole Grove Section "C" of land described as follows:— The E 1/2 of the S.E. 1/4 of the N.E. 1/4 except the South five acres of Section 23 Twp 21 S. R. 34 E, said land lying and being in Brevard County Fla.
The streets, avenues and drives as shown on said plat are hereby dedicated to the perpetual use of the public for proper purposes reserving to himself his heirs and assigns, the reversion or reversions thereof whenever discontinued by law.
In witness thereof the said Walter E. Plankenhorn has set his hand and seal at Miami Dade Co Fla, this 6th day of May A.D. 1925
Witness W.A. Bond Walter E. Plankenhorn (and)

STATE OF FLORIDA S.S.
COUNTY OF DADE
Before me this day personally appeared Walter E. Plankenhorn well known to me to be the person who executed the foregoing instrument of Dedication who being duly sworn acknowledged that he executed the same freely and voluntarily for the purposes herein set forth mentioned.
In witness thereof I have set my hand and official seal this 6th of May A.D. 1925 at Miami Dade Co. Fla.
Henry D. Keller
Notary Public State of Fla. at Large
My Commission expires March 30th 1929

This plat was made from survey by G.V. Cooper April 24th 1925.

19065
1450m.
Olat
N.J. Frocher
G.P. Merton S.C.



SEMINOLE GROVE

SECTION "C"
A SUBDIVISION OF THE E 1/2 OF THE SE 1/4 OF NE 1/4 EXCEPT S. 5 ACRES SEC. 23 TWP 21 S. R. 34 E
BREVARD COUNTY FLORIDA.
SCALE 1"=60'
APRIL, 1925.

ENGINEER'S NOTES
Eod 11 on Block Corners are 25 feet.
Dimensions on corner lots are to Block Line intersections.