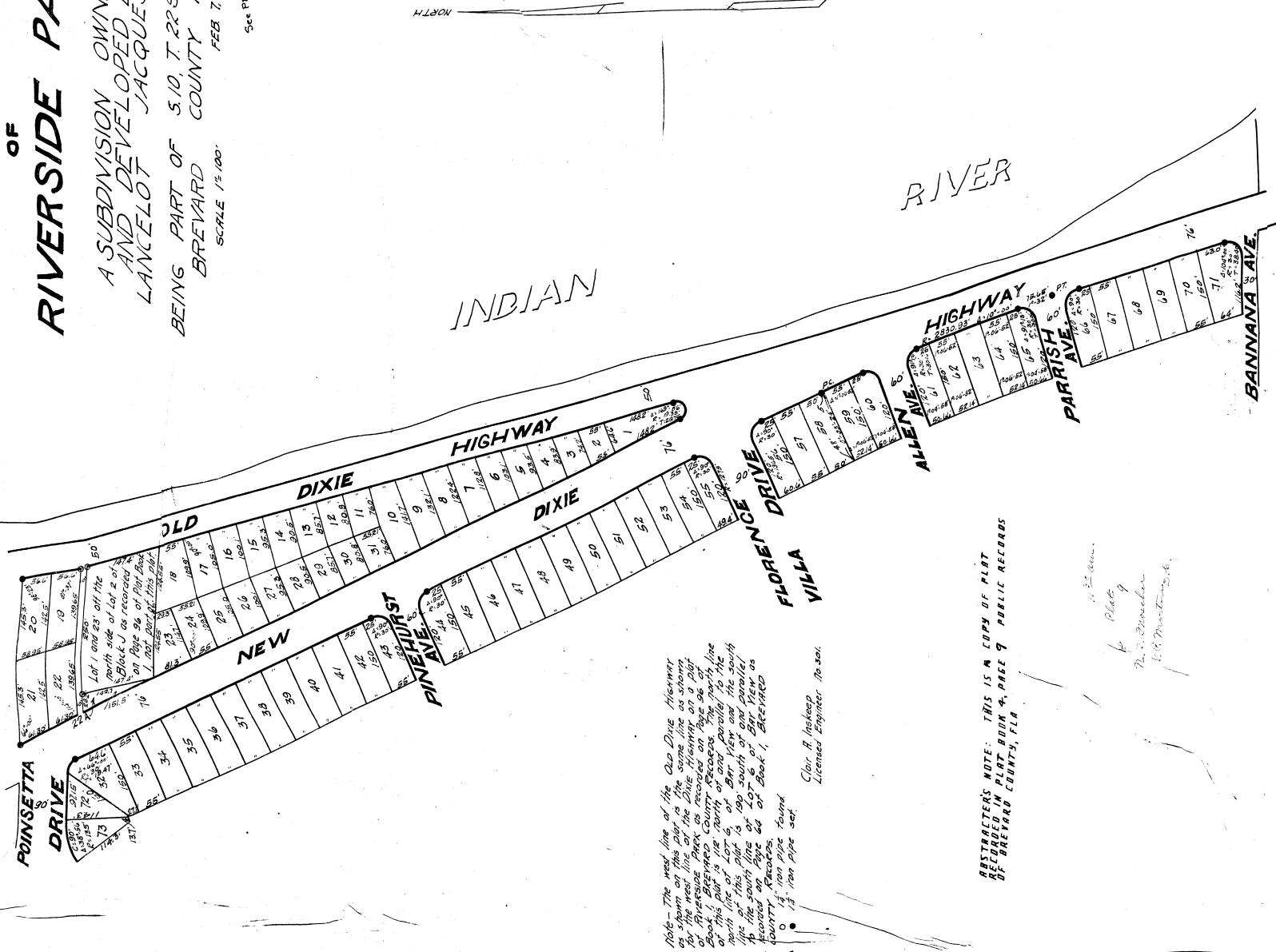


SECTION A
OF
RIVERSIDE PARK

A SUBDIVISION OWNED
AND DEVELOPED BY
LANCELOT JACQUES SR.
BEING PART OF S.10, T.22S, R.35E.
BREVARD COUNTY FLA.
FEB 7, 1925.
SCALE 1" = 100'

See PB 11 pgs 59
8 pgs



Note - The west line of the Old Dixie Highway as shown on this Plat is the same line as shown on the west line of the Dixie Highway of Riverside Park as recorded on Page 96 of Book 1, Brevard County Records. The north line of this part of Lot 6, and parallel to the north line of Lot 6, is 199' South and the south line of this plat is 199' South and the south line of Lot 6 of Book 1, Brevard County Records, found on page 64 of Plat 9.

Clair R. Inskip
Licensed Engineer, No. 501.

ABSTRACTER'S NOTE: THIS IS A COPY OF PLAT RECORDED IN PLAT BOOK 4, PAGE 9 PUBLIC RECORDS OF BREVARD COUNTY, FLA

Plat 9
No. 7, November
E. B. Martin, Jr.