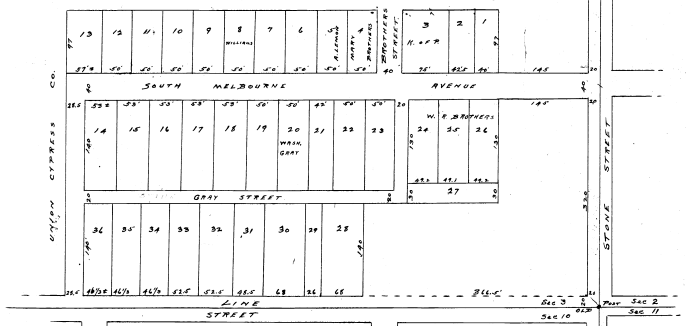


VACATED MAY 6, 1947
See C.G.M.B. 22 pg. 268

J.S. STONES SUBDIVISION
OF PART OF
SE 1/4 OF SE 1/4 OF SECTION 3
T. 22S. R. 31E.
SOUTH MILBOURNE
FLA.
SURVEYED & PLATTED 1933
L. T. PAXTON
COUNTY SURVEYOR
SCALE 1/4" = 100'

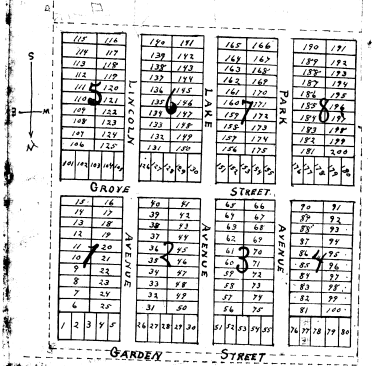


STATE OF FLORIDA
County of Brevard
Filed for record in the office of Clerk of Circuit
Court of Brevard County, Florida.
JAN 17 1934
and returned to
M. S. Moschey
Clerk Circuit Court

BAILEY'S
ADDITION TO TITUSVILLE
A SUBDIVISION OF THE
N.E. 1/4 OF THE N.E. 1/4 OF
SECTION 5, TOWNSHIP 22, S.
RANGE 35 EAST,
BREVARD COUNTY, FLORIDA.

OWNED AND DEVELOPED BY
H. A. BAILEY

All streets and avenues to be 50 feet wide.
All lots facing NORTH are 56 ft. by 110 ft.
All other lots are 50 ft. by 140 ft.



11 20 a.m.
Plat
3 41
N. J. Fincher
E. B. Winston