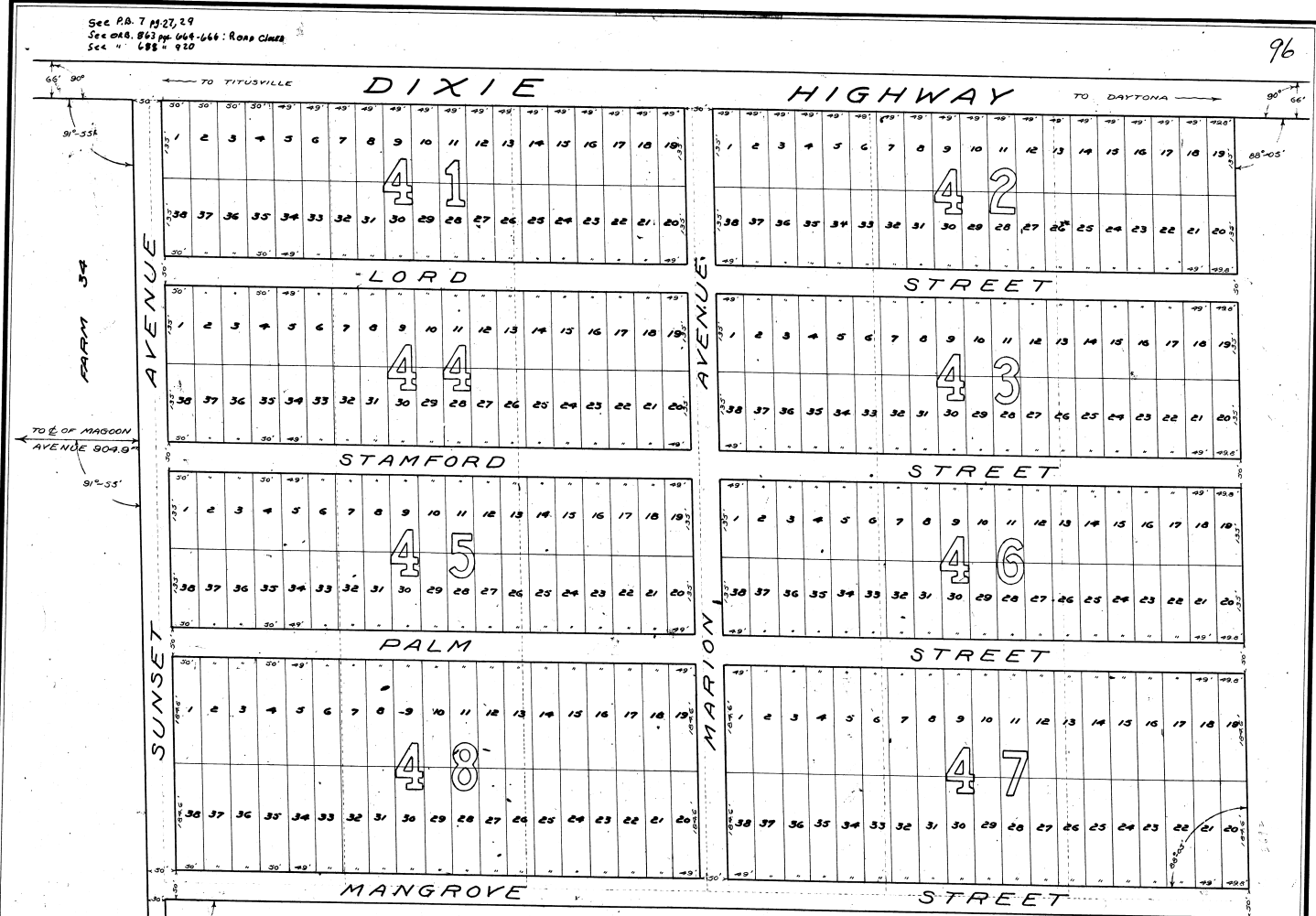


See P.A. 7 of 27, 29
See Ord. 862 pp 464-466: Road Class
Sec. 4 " 688' x 920

96



NORTH END EXTENSION OF
SCOTTSMOOR
A PORTION OF THE FONTAINE GRANT
BREVARD COUNTY — FLORIDA
SCALE 1" = 100'

5552
STREET OR PLAT NO.
FILED FOR RECORD IN THE OFFICE OF CLERK OF CIRCUIT COURT FOR BREVARD COUNTY, FLORIDA.
JAN 1929 945
FILED IN PLAT 76
N. J. Zoschen
CIVIL ENGINEER
G. P. M. [unclear] D.C.
Living A. Hilder
DECEMBER 1929

78 1/2 1/2 20 - 20 20 20