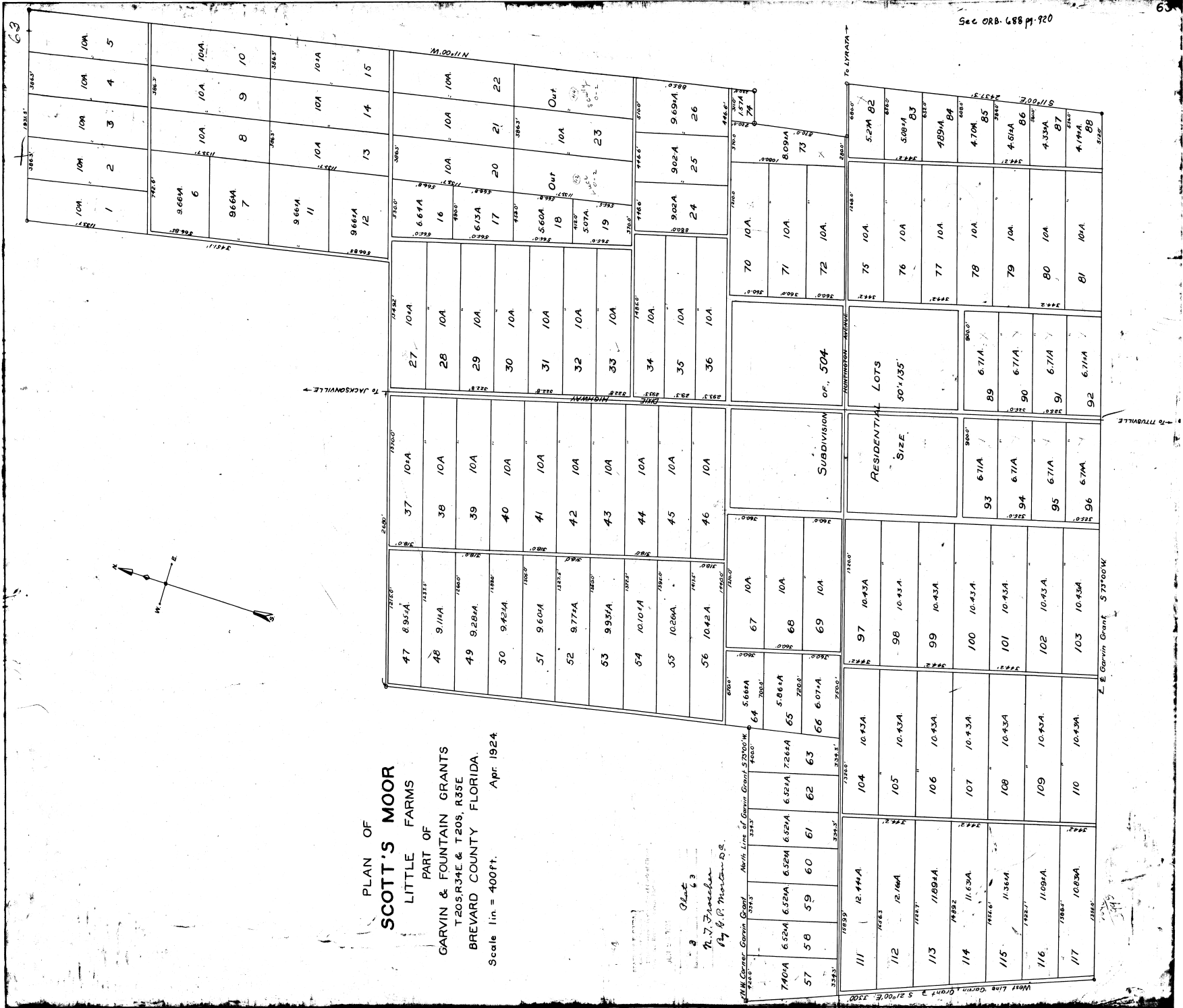


Sec ORB. 688 p. 920



PLAN OF
SCOTT'S MOOR
LITTLE FARMS
PART OF
GARVIN & FOUNTAIN GRANTS

T20S.R34E & T20S. R35E
BREVARD COUNTY FLORIDA.

Scale lin = 400ft. Apr 1924

92-63
N.J. Funcher
By G.P. Moulton-D.S.

111	12.44A	104	10.43A	97	10.43A
112	12.16A	105	10.43A	98	10.43A
113	11.69A	106	10.43A	99	10.43A
114	11.63A	107	10.43A	100	10.43A
115	11.36A	108	10.43A	101	10.43A
116	11.09A	109	10.43A	102	10.43A
117	10.83A	110	10.43A	103	10.43A

64	5.66A	67	10A	75	10A
65	5.86A	68	10A	76	10A
66	6.07A	69	10A	77	10A

47	8.95A	37	10A	27	10A
48	9.11A	38	10A	28	10A
49	9.28A	39	10A	29	10A
50	9.42A	40	10A	30	10A
51	9.60A	41	10A	31	10A
52	9.77A	42	10A	32	10A
53	9.95A	43	10A	33	10A
54	10.10A	44	10A	34	10A
55	10.26A	45	10A	35	10A
56	10.42A	46	10A	36	10A

1	10A	2	10A	3	10A	4	10A	5	10A
6	9.66A	7	9.66A	8	10A	9	10A	10	10A
11	9.66A	12	9.66A	13	10A	14	10A	15	10A
16	6.61A	17	6.13A	18	5.60A	19	5.07A	20	Out
21	10A	22	10A	23	Out	24	9.02A	25	9.02A
26	9.69A	27	10A	28	10A	29	10A	30	10A

