

PLAT BOOK 2

PAGE 101

Plat of Subdivision  
adjoining Forest Park  
CITY of COLOA FLA

For  
**GUS C. EDWARDS.**

Nov 1919

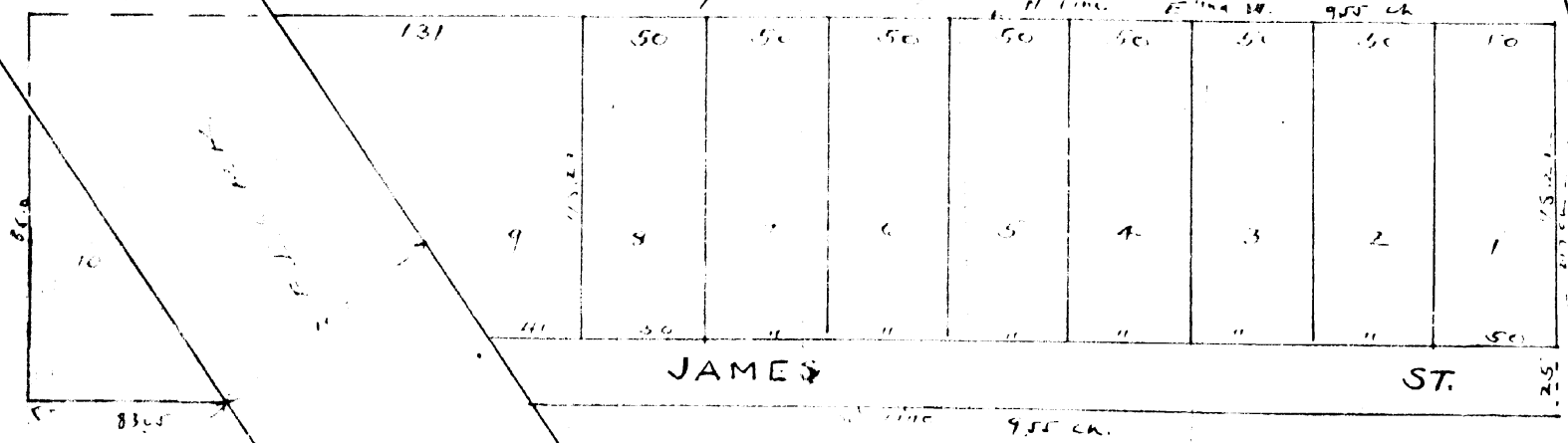
Scale 60' = 1"

State of Florida  
County of Broward:

GUS C. EDWARDS being duly sworn says that  
he is owner of following lands, beginning at south west corner of  
land sold to J. J. ... 12.33 chs North of S W corner lot 5 Sec 13 T24  
S.R. 3615 ... 117 ch. Thence W 955 ch to W line lot 5 Thence  
N 217 ch to beg. ... also that  
he has caused this same to be surveyed and platted by  
C.M. Rogers and files this same for record

Signed sworn to and acknowledged  
before me this 11th day of Nov 1919

Notary Public  
My Commission Expires



C.M. Rogers  
Engineer  
Daytona Fla

Forest Park