

For Replat, Sec. PB. 10 p. 76  
Bull. Reg. Ave. Closed. Sec.  
728.5 R37E

**MAP**  
OF  
**MEYERS' ADDITION TO MELBOURNE**

Being a Subdivision of the east 15 acres or the east 3/8 of the NE 1/4 of the SW 1/4, and a small portion of the SE 1/4 of the SW 1/4 of Sec. 3, T 28S, R 37E, in Brevard County, Florida.

Scale: 1 inch = 100 feet.

Surveyed and Subdivided Feb. 1915 by Stanley Krajciok.  
Map made Aug. 16, 1915 by

*B.F. Johnson* Engr.

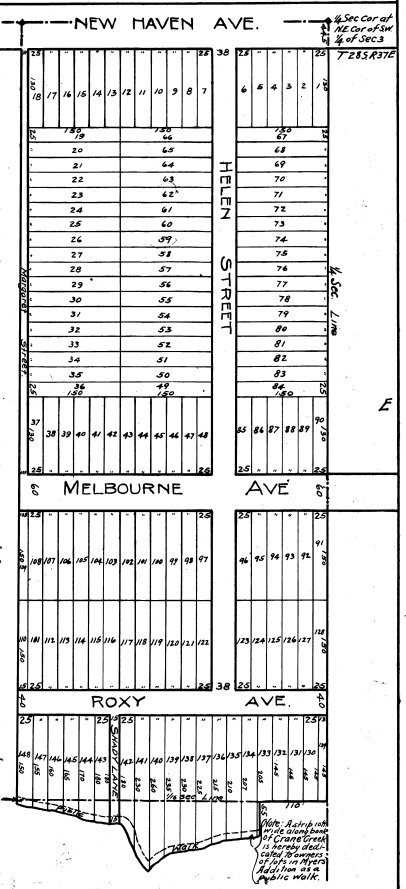
— OWNERS CERTIFICATE —

Know all men by these presents, that V.H. Meyers called to be surveyed and platted Subdivision of a part of the SW 1/4 of Sec. 3, T 28S, R 37E, known as Meyers' Addition to Melbourne, according to the accompanying Plat, and that the Plat heretofore filed in Plat Book 2 on page 47, in the Brevard County Clerk's Office, on Mch. 6<sup>th</sup> 1915 is hereby declared void and vacated, because of an error in the description of the tract subdivided, and the accompanying Plat is hereby filed to correct that error and to supersede and take the place of said erroneous Plat; and he hereby dedicates to the perpetual use of the public the Streets and Avenues shown hereon, reserving unto himself the reversion or reversions of same whenever discontinued by Law.

Signed, sealed and delivered  
in the presence of:  
*V.H. Meyers* }  
*W.E. Marshall* } Witnesses

State of Florida  
County of Brevard  
I, hereby certify, that on this 17<sup>th</sup> day of August, 1915, A.S. personally appeared before me, an officer duly authorized to administer oaths and take acknowledgments, *V.H. Meyers* to me well known to be the person who executed the above for the purpose therein expressed. *V.H. Meyers* acknowledges that the above plat of the NE 1/4 of SW 1/4 1st part of SE 1/4 of SW 1/4 of S 3 T 28S R 37E, East is a true and correct plat to the best of his belief.

*Charles E. Campbell*  
Notary Public



Grane Creek  
S

2<sup>nd</sup> August Plat  
3<sup>rd</sup> August  
*N. Mitchell*  
*W. Marshall*