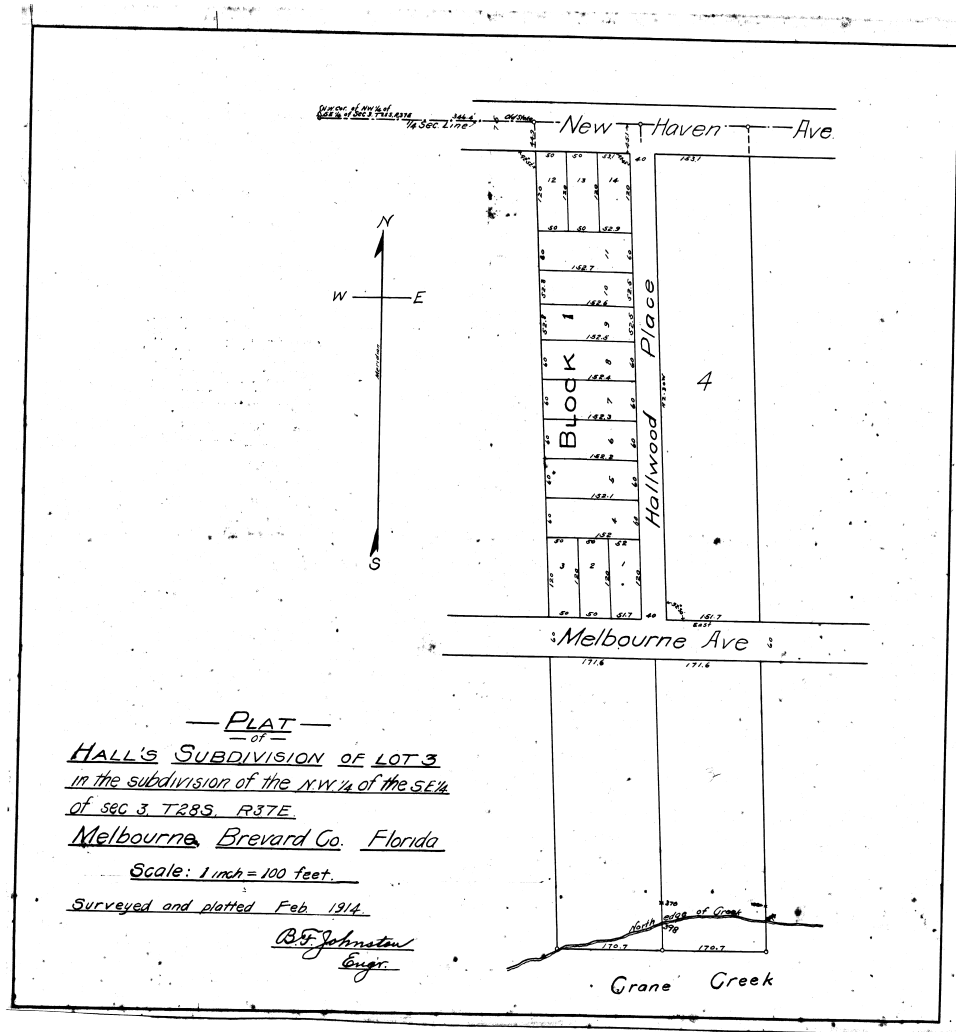


Page "27"



— PLAT —
 OF
HALL'S SUBDIVISION OF LOT 3
in the subdivision of the NW 1/4 of the SE 1/4
of sec 3 T28S R37E
Melbourne, Brevard Co. Florida
 Scale: 1 inch = 100 feet.
 Surveyed and platted Feb. 1914.
B.F. Johnston
 Engr.

STATE OF FLORIDA
 I, John Mitchell,
 Clerk of the Board of
 Commissioners, do hereby
 certify that the within
 plat is a true and correct
 copy of the original
 filed in my office on
 the 15th day of Feb.
 1914.
John Mitchell
 Clerk of the Board of
 Commissioners.

See page 33-B
 L. P. PANTIN
 CLERK