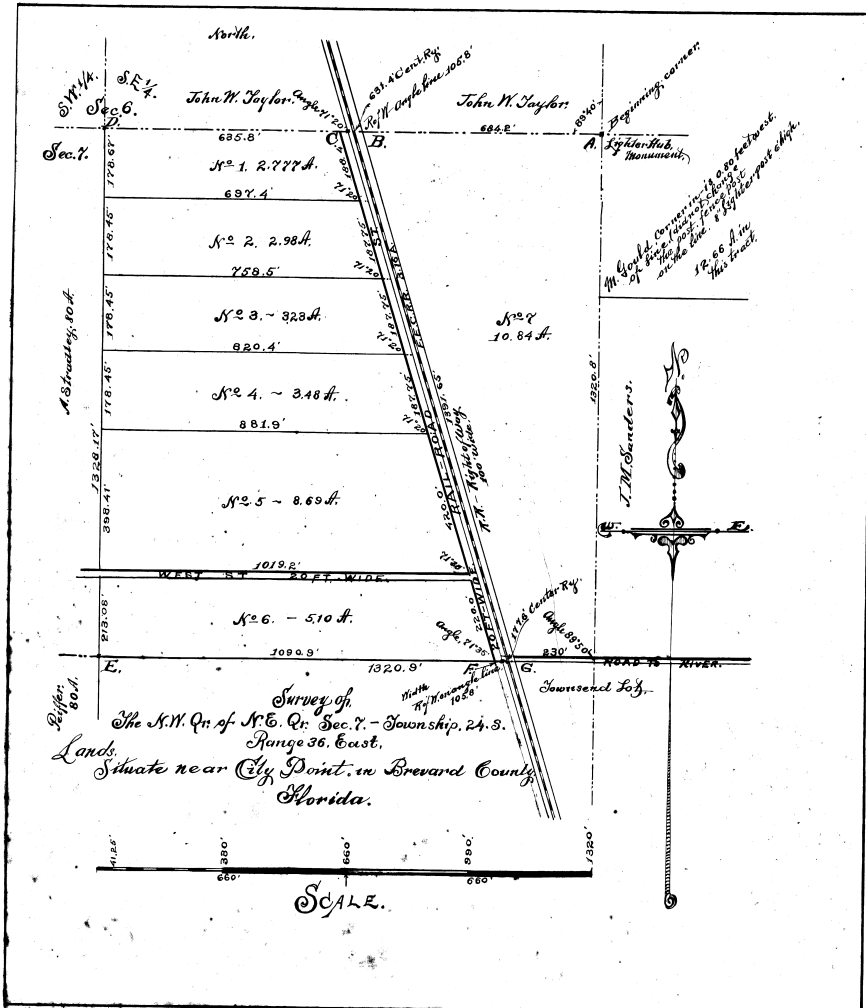


3d February 1914
72
1914
J. M. Sanders



JOHN M. SANDERS
SUBDIVISION OF
THE ^{1/4} Quarter
N.W. Quarter of the N.E. SECTION, N. 24.
TOWNSHIP N. 24, SOUTH.
RANGE N. 36, EAST.

Survey
Exploratory - Beginning at the N.E. Corner of said 1/4-1/4 tract at a post, thence west with section line, sections 6 & 7 - 1320 feet, passing post at S.W. Corner lot No. 7, line S.E. Coast land at 578.5' center of track at 631.4'. Bond line west of track at 684.2 ft. and a 20 ft road next by lands and paralleling same southeasterly on front of lots. Commencing at N. on Sec. line and Qr. Corner, thence South with lines of survey 1326.17' to a corner 1/4-1/4 at E. thence with said south line East 1320.5 feet to corner post at N. passing corner at F. S.E. Coast Ry. at 1690.9' at an angle of 71° 35'. Center line of Railway at 1143.9 ft. E line at 1196.2 which is S.W. Corner of lot No. 7 - thence N. with survey line 1320.8' to corner at B, and place of beginning, containing in all 40.29 acres, 315 of which belongs to the Florida East Coast Railroad Company.

Subdivision.

All lots marked in the subdivision are connected by angle to the main section lines, so as to be easy to re-establish. Each lot is consecutively numbered has the boundary lines, distances marked on in feet and hundredths of feet. Each tract also has the acres and fractions marked on in a like manner. For the convenience of lot owners a twenty foot roadway is set along the railway and on east front of lots on the west side of said railroad. The same is named Railroad Street and each lot is responsible for the upkeep and repair of its frontage full 20 feet wide. West Street 20 feet wide is to furnish a line of road to take the place of the old trail now running at an angle westward and northerly across the lands of said Sanders tract to the Stradley and other homesteads. Corners D & E are in a large grassy pond. I hereby certify to the above as a true and correct return of said survey as made by me under the direction of the owner, in August 1913.

Wilbur A. Ginn, C.E.
Surveyor.