

In the areas of the lots is not included the right of way of Fla. F. C. Ry, but the public road along the bank of the river

Plat of
CT McCarly's Subdivision of
Lot 2

Tp 35 So - Sec 23 - Rge 40 E

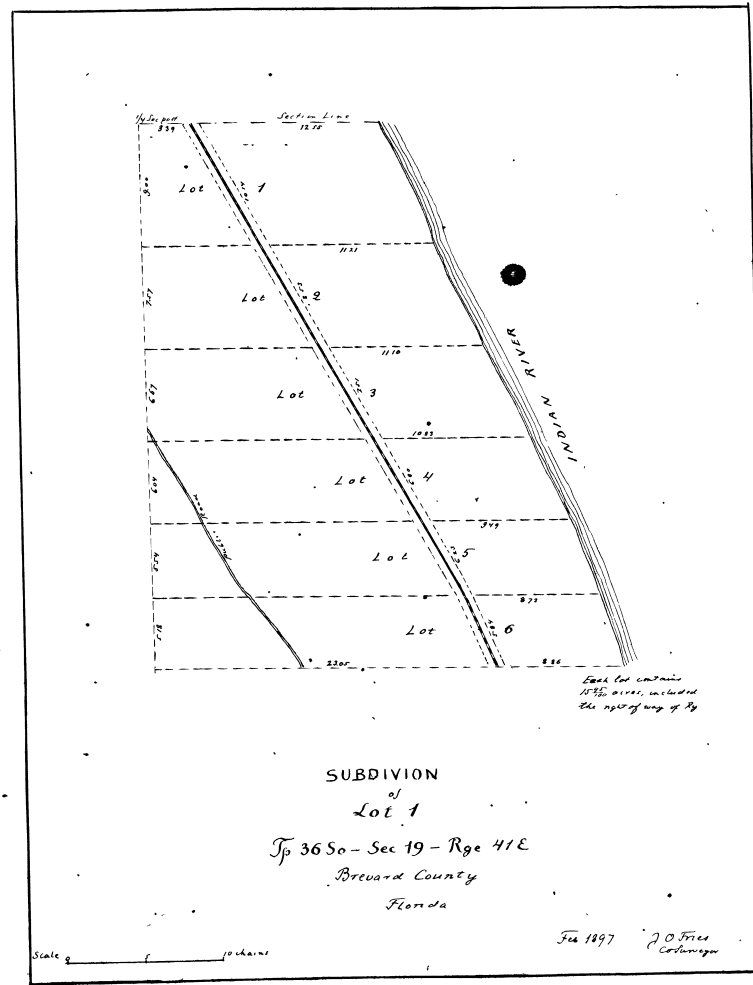
Brevard Co Fla

Surveyed and plotted Dec 1901 by J.O. Fries
Columbiana

Scale 2 1/2" = 1 mi

Plat for record in the Clerk's
office Brevard County Florida.
This 2nd day of January 1902
and Promised to book Plat Book 1
Page 114

J. O. Fries
Clerk
By *W. A. Stewart*
Clerk



SUBDIVISION
of
Lot 1
Tp 36 So - Sec 19 - Rge 41 E
Brevard County
Florida

Jan 1897 J.O. Fries
Columbiana

Scale 0 10 chains

Transcribed from plat recorded
Plat Book 28 page 742
J.O. Fries
Columbiana