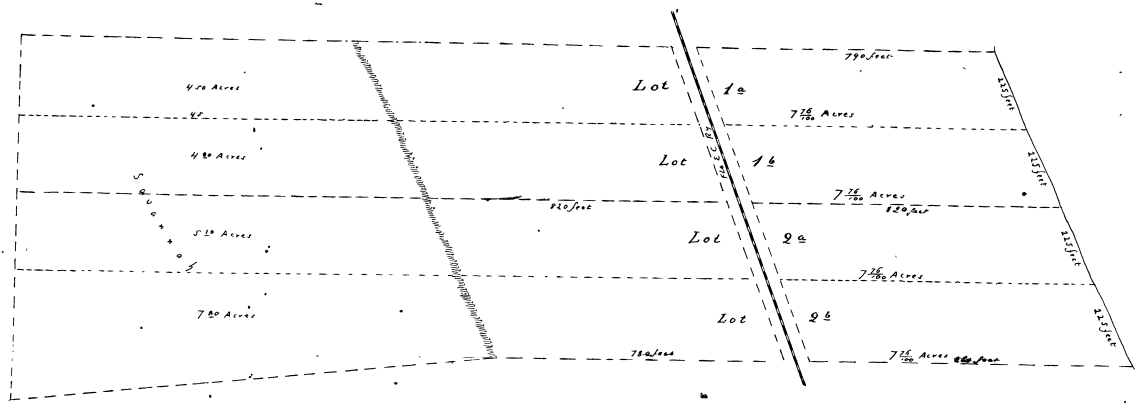


109



L. and J. F. Wooten's
Subdivision of

The South 20 acres of Lot 2 and
The North 33 acres of Lot 3
Tp 36²⁰ ~ Sec 1 ~ Rge 40E

Scale 200 feet to 1 inch

Surveyed & platted Dec 1897 by J. O. Fries Co Surveyors

Filed for record in the Clerk's Office
Brevard County, Florida this 22nd day of
March 1898 and recorded in Book 1
Page 109

C. R. Stewart
Clerk Circuit Court

Transmitted from the Original
by *J. O. Fries*
County Surveyor