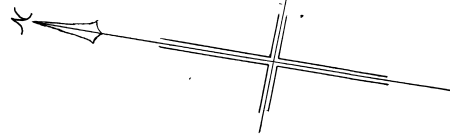
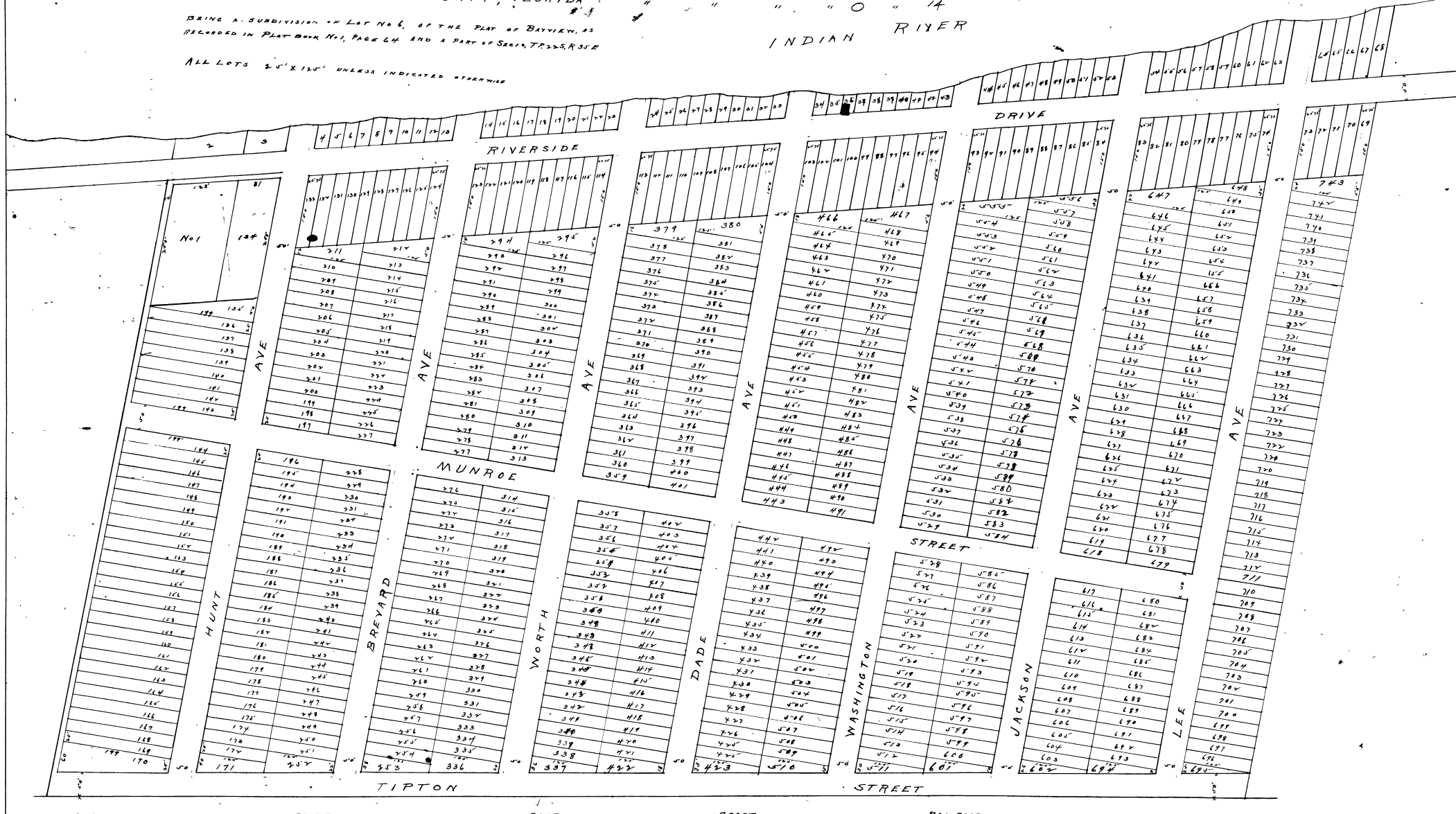


MAP OF  
For Resubdivision RIVERSIDE - PARK - TRACT See Plat Book No. 2 page 14.  
BREVARD COUNTY, FLORIDA

BEING A SUBDIVISION OF LOT NO. 6, OF THE TRACT OF BAYVIEW, AS  
RECORDED IN PLAT BOOK NO. 1, PAGE 64 AND A PART OF SECTIONS 12, 22, 32, 33 & 34

ALL LOTS 20' X 120' UNLESS INDICATED OTHERWISE

INDIAN RIVER



Recorded July 8th 1912  
J. R. Paxton  
County Clerk

SCALE 1" = 100'  
JUNE 1912  
WE HEREBY CERTIFY THIS MAP TO BE CORRECT  
FAIRFIELD & DOW, ENGRS

STATE OF FLORIDA,  
County of Brevard, ss  
This instrument of writing was filed for record  
in the office of the Clerk of the Circuit Court on this  
24th day of June, 1912, at 10:25  
and the same has been duly recorded in  
Book \_\_\_\_\_ at \_\_\_\_\_  
Witness my hand and the seal of the Circuit  
Court this 24th day of June, 1912.  
A. D. Stewart  
Clerk of Circuit Court  
By: D. A. Stewart  
Deputy Clerk