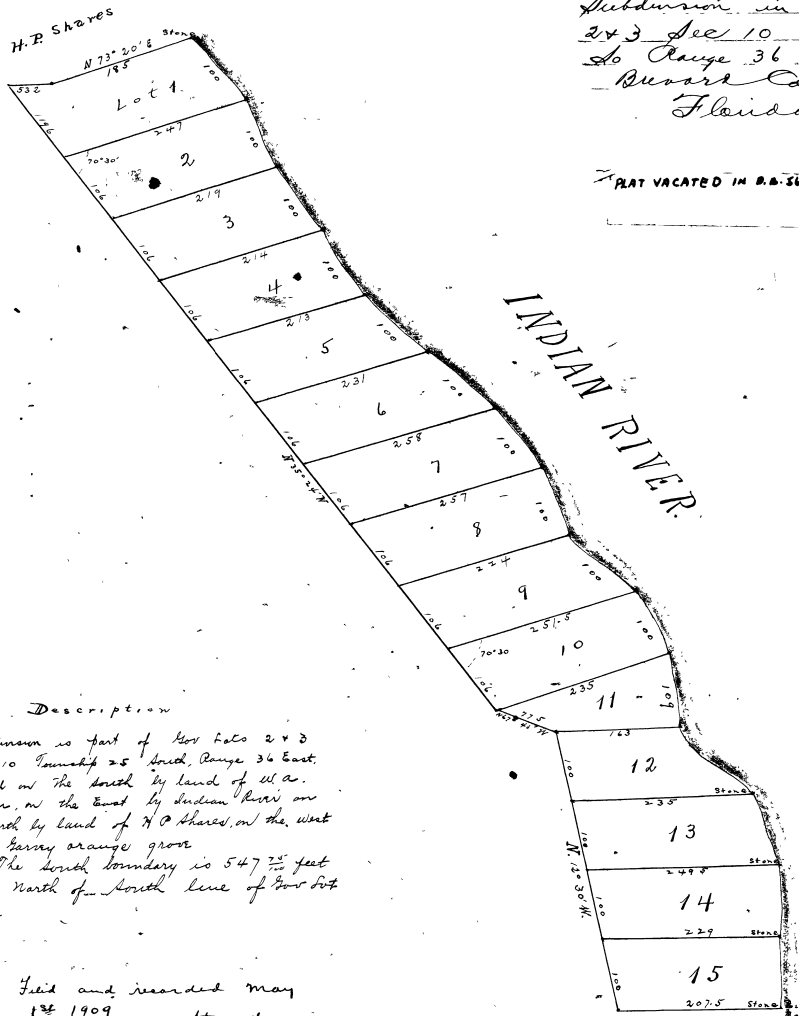


Plat of Garveys
Subdivision in Lots
2 & 3 Sec 10 Tp 25
So Range 36 E
Brevard County
Florida

PLAT VACATED IN D.A. 56 BY 302,303 IN 1912



Description

This subdivision is part of Gov Lots 2 & 3 Section 10 Township 25 South, Range 36 East, bounded on the south by land of W. A. Baldwin, on the east by Indian River on the north by land of H. O. Shores, on the west by the Garvey orange grove.

The south boundary is 547.75 feet due north of south line of Gov Lot 3.

Filed and recorded May 1st 1909
 A. A. Stewart
 and Census Clerk
 By C. S. Stewart S.E.

Scale $\frac{1 \text{ inch}}{100 \text{ feet}}$

W. A. Baldwin
 Surveyor's Plat of
 March 1909
 by J. O. Fries Co S