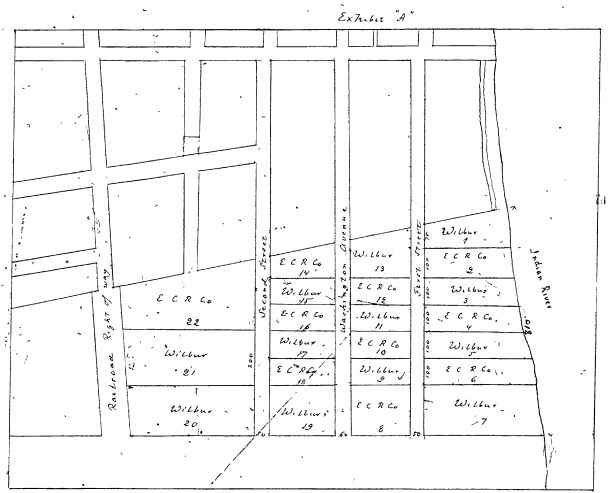


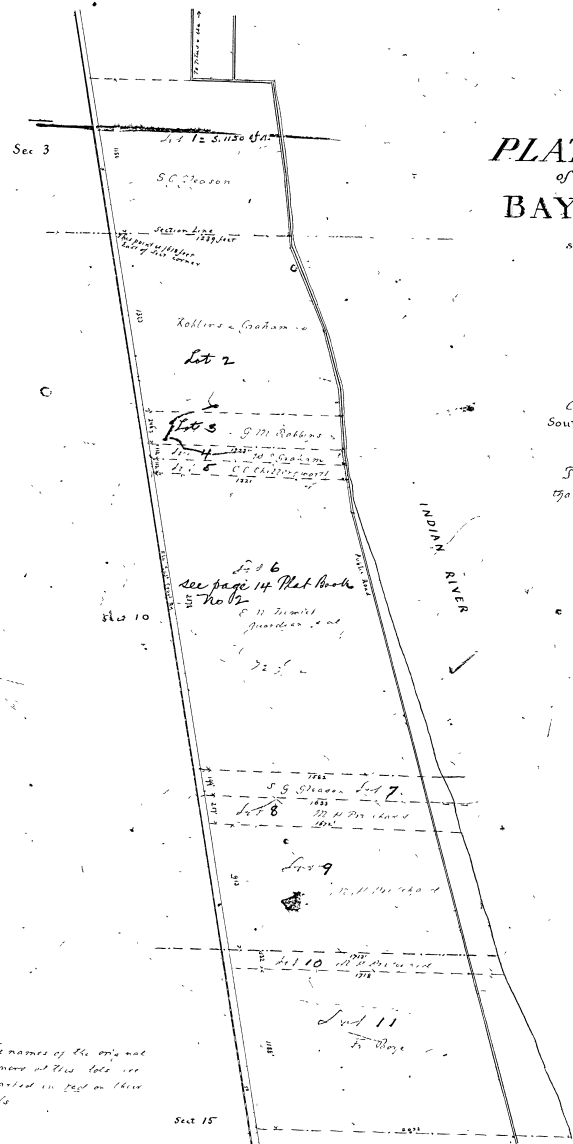
For Receipt See P.O. 5 p. 16
" " " " 11 14 p. 9
" " " " 12 14-18



Plat of a
Subdivision
of
20 Acres
in
North East
Corner
of
DeLoe's Grant
in
Sec. 3
Tp. 22 S. ~ Rge. 35 East

Transcribed from Original plat,
reproduced in Chancery Order Book
No. 2, page 469

By J. O. Fries
Clerk



PLAT
of
BAY VIEW

south of
TITUSVILLE

Brevard Co
FLA

Comprising all that part of
South 1120 feet of Lot 4 - Sect 3
Lots 1 & 2 - Sect 10
Lot 1 - Sect 15
Tp. 22 South ~ Rge. 35 East,
that lies East of Right of way of
Fla. East Coast Ry.

Surveyed and platted
August and October 1903

By J. O. Fries
Clerk

Scale 1 chain = 1 inch

The names of the original
owners of this land are
marked on plat on these
lots

STATE OF FLORIDA,
COUNTY OF BREVARD,
This instrument of writing was filed for record
in the office of the Clerk of the Circuit on this
27th day of October, A. D. 1903,
and the same has been duly recorded in No. 12
at page 64
Witness my hand and the seal of the Circuit
Court this 27th day of October
A. D. 1903
By: J. O. Fries
CLERK, CIRCUIT COURT
JURY CLERK