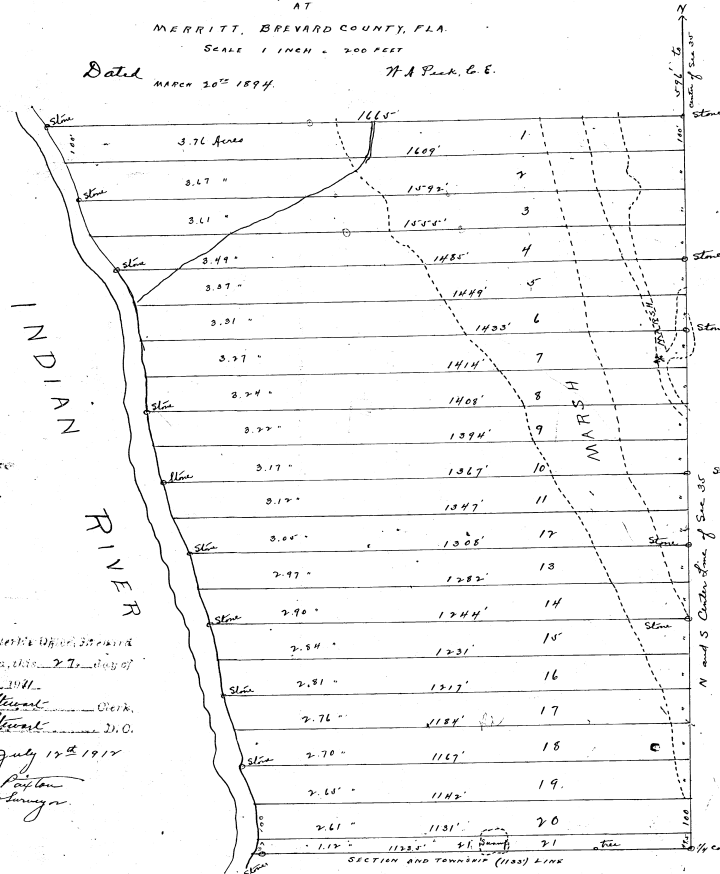


PLAT OF LOTS BELONGING TO E.W. MOORE AND F.C. CANTINE IN SEC 35, T 24 S, R 36 E AT MERRITT, BREVARD COUNTY, FLA.

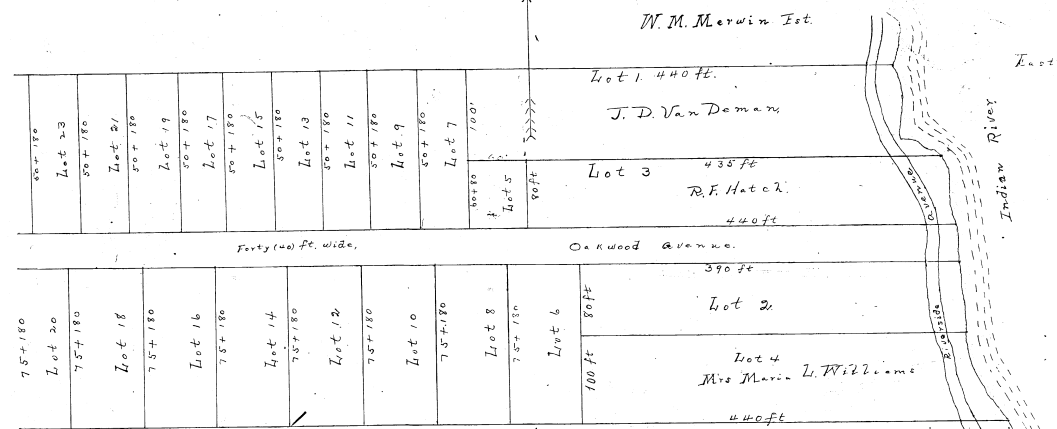
See D.O. 312 pp. 118
" " 322 p. 299 for DEDICATION
FOR REPLAT SEC 35, R. 36 E.
SEC 24, 100 pp. 476

Dated MARCH 20th 1894. W.A. Park, C.E.

SCALE 1 INCH = 200 FEET



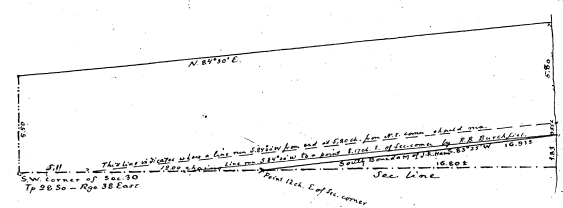
Filed in the Clerk's Office, Brevard County, Florida, this 27th day of April 1894.
A.A. Stewart, Clerk.
O.R. Stewart, D.O.
Revised July 15th 1914
L.P. Poston, Surveyor.



Williams Bros addition to town of Rockledge
8 in. to 10 ft

Center Part of Lot 4 Sec 37 25 S. R. 36 E
Govt Survey

STATE OF FLORIDA, ss.
This instrument of writing was filed for record in the office of the Clerk of the Circuit Court, Brevard County, Florida, this 27th day of April, 1894, and the same has been duly recorded in Book 285, page 63.
Witness my hand and the seal of the Circuit Court this 27th day of March, A. D. 1894.
A.A. Stewart, Clerk of the Circuit Court, Brevard County, Florida.



PLAT showing the correct location of a tract of land belonging to J. R. Ham located in South half of SW 1/4 Sect. 30 Tp. 28 S - Rge 38 East Brevard Co Fla.

This description is not correct as a line running S 84° 30' W from a point 5.80 chains South of the N.E. corner of the land intersects the Section line 8 2/3 chains East of Section corner, instead of 12 chains East of the same. In order to fix the survey boundary of the land I first located the survey boundary of a tract of land originally sold by James T. Bassett to F.W. Condit, dated the 3rd day of June 1885 and by deed recorded in Book 3, page 386, and described as "Commencing at a point where the South Survey Boundary of Sect. 30, strikes Indian River, thence North 1 1/2 chains thence S 84° 30' W 16 2/3 chains, thence East 16 2/3 chains to beginning, containing 1 1/2 Acres, more or less. The land now claimed by J. R. Ham was first deeded by J. T. Bassett to C.J. Hester and according to an affidavit of the said J. T. Bassett was intended to join the north boundary of said tract deeded to F.W. Condit. The distance from the N.E. corner of J. R. Ham's land to the N.E. corner of Condit's land is 6 2/3 chains and not 5 2/3 chains, as stated in the deed. A line run S 84° 30' W from the last corner intersects the Section line 8 2/3 chains East of Section corner. But as the deed to Hester, by which all the subsequent owners hold title, gives the distance 12 chains, I have run the line straight from a point on Indian River 1 1/2 chains North of Section line to a point 12 chains East of Section corner. The bearing of this line is S 85° 10' W.

Dunnville, Brevard Co. Fla. March 24th 1903

J.O. Sims County Surveyor

Being part of the South half of the West quarter of Sect. 30 in Tp. 28 S., Rge 38 East and bounded as follows:
Commencing at SW corner of Sect. 30, thence running North 5 1/2 chains, thence N 81° 30' E 29 2/3 chains to Indian River, thence South along Indian River 5 2/3 chains, thence S 84° 30' W 16 2/3 chains, thence West 12 chains to beginning, containing 17 2/3 acres, creating the right of way of Fla. East Coast Railway Company.

STATE OF FLORIDA, ss.
This instrument of writing was filed for record in the office of the Clerk of the Circuit Court, Brevard County, Florida, this 27th day of April, 1894, and the same has been duly recorded in Book 285, page 63.
Witness my hand and the seal of the Circuit Court this 27th day of March, A. D. 1894.
A.A. Stewart, Clerk of the Circuit Court, Brevard County, Florida.