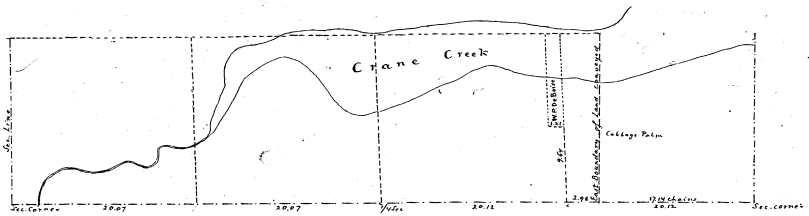


Plat

showing the location of a tract of land conveyed by deed from Lucy H Boardman to the Protestant Episcopal Church dated the 6th day of May 1888 and recorded in Book K page 343 Tp 28 So ~ Sect 33 ~ Rge 37 E. ~
Brevard Co - Fla

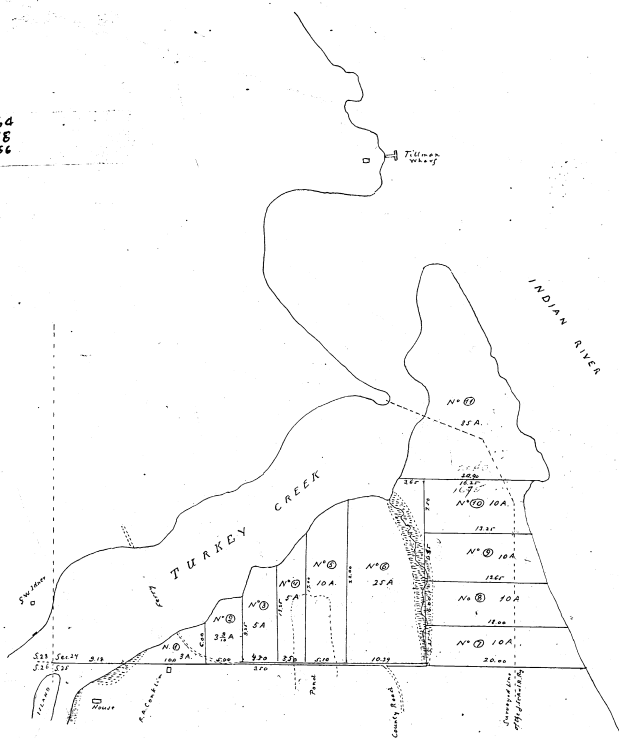
This tract comprises all the Survey 1/4 of Sec 3 - Tp 28 So. Rge 37 E. lying West of a line running due North from a point 1/4 chain West of S.E. corner of Sec 3, except a piece divided by U. S. G. Base.

For Replat See P.B. 10 ps. 64
" " " " 9 p 18
" " " " 13 p 36



STATE OF FLORIDA) ss.
COUNTY OF BREVARD)
This instrument of writing was filed for record in the office of the Clerk of the Circuit on this 20th day of July A. D. 1903 and the same has been duly recorded in Book 1 at page 62
Witness my hand and the seal of the Circuit Court this 20th day of July
A. D. 1903
By a. a. Stewart CLERK OF CIRCUIT COURT.
O. A. Stewart DEPUTY CLERK.

Surveyed and plotted July 1903
by J. D. Sims
Cartographer



Plat of the Subdivision of

that portion of Section 24, T. 28 S., R. 37 E., that lies land is situated South of Turkey Creek.
Scale 10 chains = 1 inch

All distances are given in chains and links. All lines run parallel only or at right angles to the Survey line of said Sec. 24 the course of which is S. 89° 10' E.

Surveyed and plotted by R. B. Burchfield
County Surveyor
March 20-24 1893. Returned to Fla.

Filed and recorded June 25 1893
O. A. Stewart

Transcribed from plat recorded in
Deedbook V. page 697 by
J. D. Sims
Cartographer