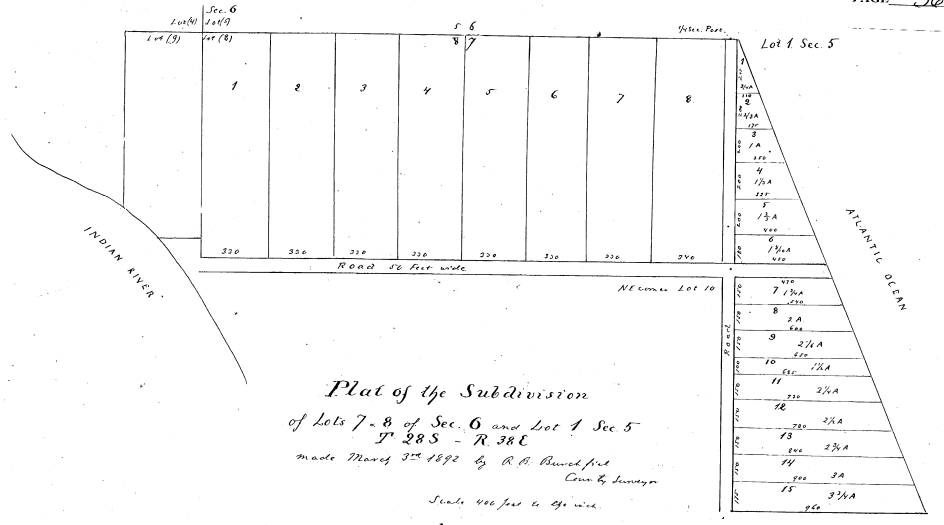


Plat of
The proposed Change of Melbourne Avenue
 in the Town of Melbourne, Florida.
The dotted lines show the original location as laid out
by Grant. The solid lines show the location as
surveyed by me August 16, 1895, which I hereby
certify to be as represented in this plat.
 R. B. Burchfield
 County Surveyor
 Brevard County, Fla.
 Scale 110 ft = 1 inch

Filed for record Sept 7, 1895
 A. A. Stewart Clerk
 by C. R. Stewart 30

Transmitted for plat recorded in
 Deedbook 2, page 689 by
 J. O. Price
 County Surveyor

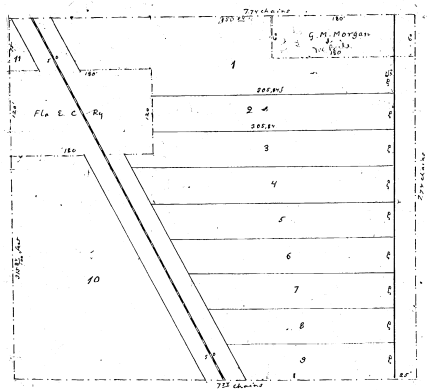


Plat of the Subdivision
 of Lots 7-8 of Sec. 6 and Lot 1 Sec. 5
 T. 28 S - R. 38 E
 made March 25, 1892 by R. B. Burchfield
 County Surveyor
 Scale 400 feet to 1 inch

Filed and Recorded April 20, 1892
 A. A. Stewart
 Clerk

For Replat See P.O. 1099 62
 11 9 11 12

Transmitted from plat recorded in
 Deedbook 2, page 743 by J. O. Price
 County Surveyor

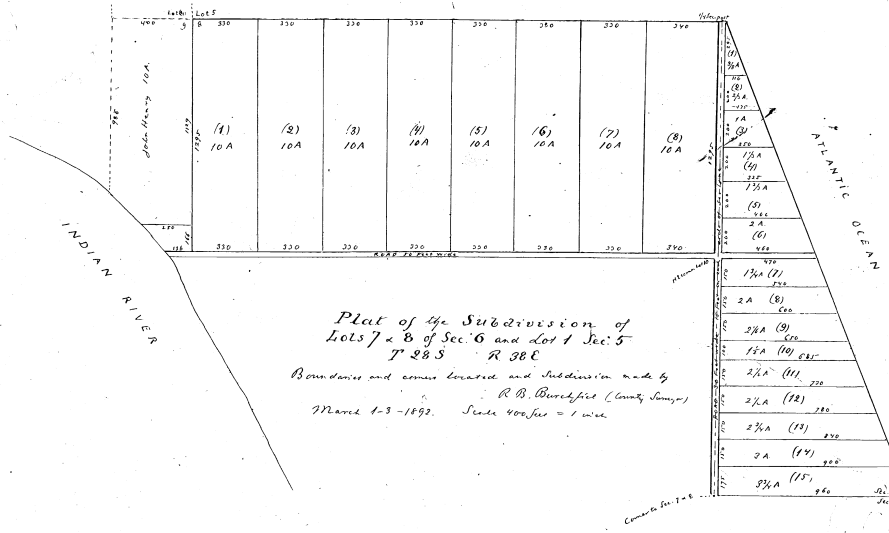


Paine Harrington's Subdivision
 AN ADDITION TO
MELBOURNE
 Brevard County
 FLA.

Surveyed and plotted February 1906
 by J. O. Price, County Surveyor

This plat takes place of one
 supposed a plat of this tract, included
 in my well known subdivision of Melbourne
 in Deedbook 2, page 58 of Brevard Co.
 Records in the Clerk's office in Melbourne
 Paine Harrington

Scale 100 feet = 1 inch



Plat of the Subdivision of
 Lots 7-8 of Sec. 6 and Lot 1 Sec. 5
 T. 28 S - R. 38 E
 Boundaries and corners located and Subdivision made by
 R. B. Burchfield (County Surveyor)
 March 4-3-1892. Scale 400 feet = 1 inch

This plat, nearly identically
 the same as the upper one in this
 same page is posted on page 747
 Deedbook 2, but no date for the
 filing is recorded in the same office.

Transmitted from a plat on page 747
 Deedbook 2, by J. O. Price
 County Surveyor

Surveyed 1894
 J. O. Price

A. A. Stewart
 Clerk

This Subdivision comprises that certain tract
 of land, formerly known as the Beach land cover
 described in folio 516 beginning 516 distance South of the
 corner of the N.E. 1/4 of the N.E. 1/4, Sec. 3 - T. 28 S., R. 38
 E., East, thence running West 77 1/2 chains, North 7 1/2 chains,
 East 7 1/2 chains, South 7 1/2 chains to beginning, containing
 6 acres. EXCEPT a lot in the N.W. corner 60 x 180 feet, and
 a lot beginning 75 feet South of N.W. corner, running South
 180 feet East 180 feet, North 120 feet, West 180 feet,
 also except the Right of Way of Fla. E. C. Ry.