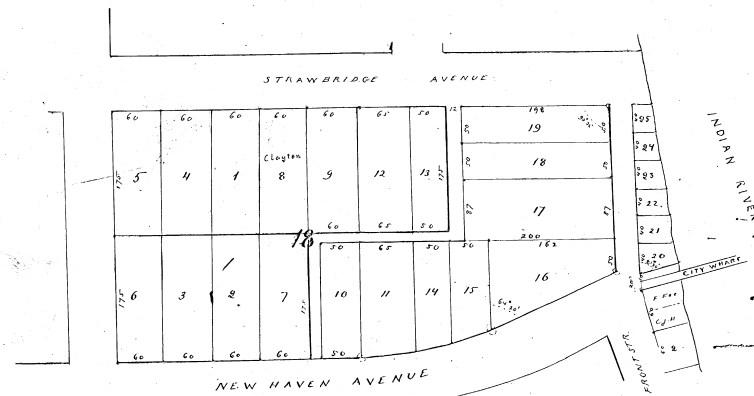


Plat of
The Re-Subdivision of
Block 25, 26 and 27
of
MELBOURNE
Florida
By J. H. Phillips and W. R. Campbell
Scale 100 feet = 1 inch
Nov. 4, 1905
Platted by R. B. Burckfiel
County Surveyor

Filed November 5th 1895 by R. B. Burckfiel
A. A. Stewart
by C. R. Stewart, Sec.

Transmitted for plat,
recorded in Deedbook 2, page 690
by J. O. Piles
County Surveyor

For Replats See P.A. 10 p. 35
" " " " 9 p. 74



Plat
of Subdivision of Block 18 of
MELBOURNE, Florida.

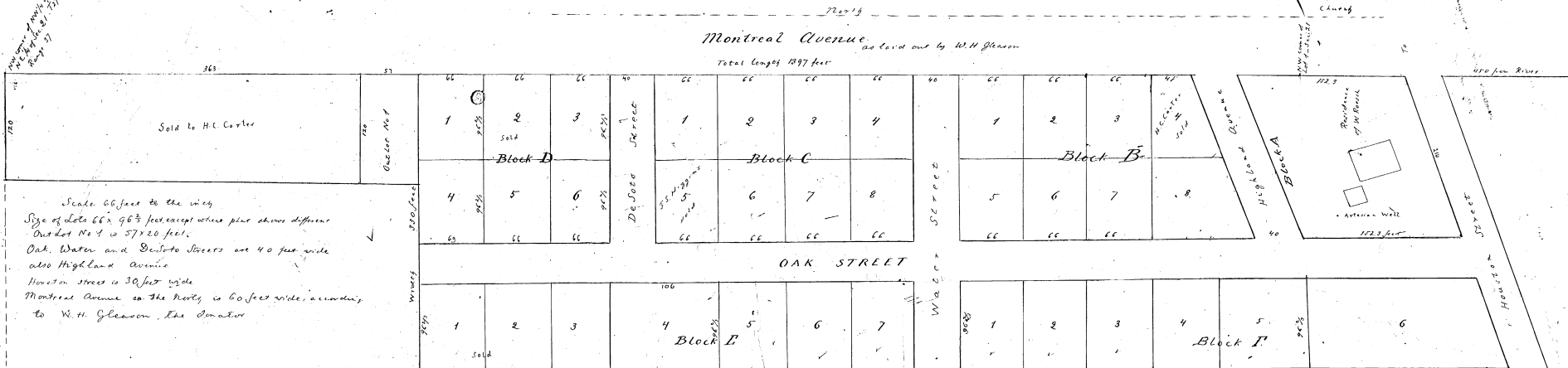
Known as the Grove Block: Lots 1, 2, 3, 4, 5 & 6 one shown in the
Original plat. Lot 8 is a tract sold to one Clayton
Lots 7, 9, 10, 11, 12, 13, 14, 15, 16, 17, 18, 19, 20, 21, 22, 23, 24 and 25 are the
property of Miss Jennie Strawbridge

Subdivided and platted by R. B. Burckfiel
April 26th 1890
Scale 100 feet = 1 inch
(County Surveyor)

Filed and recorded May 10th 1892
A. A. Stewart
Clerk

Transmitted for plat recorded in Deedbook A
page 740 by J. O. Piles
County Surveyor

To Hotel Terrace, Magnolia Avenue



Personally appeared before me this 16th day of May A.D. 1892, Ada L. Roesch,
and William R. Roesch and acknowledged that this plat shows the subdivision of
their property at Eau Gallie, Florida, as arranged by R. B. Burckfiel, County Surveyor.
Jno. E. M. Hodgson
Notary Public for Orange County

Filed and recorded this May 17th 1892

A. A. Stewart
Clerk

Transmitted for plat recorded
in Deedbook A, page 741 by J. O. Piles
County Surveyor

Roesch's Addition to Eau Gallie

Situated in Lot 1 and NW 1/4 of N 1/4 Sec 21 - T 27 S - R. 27 East