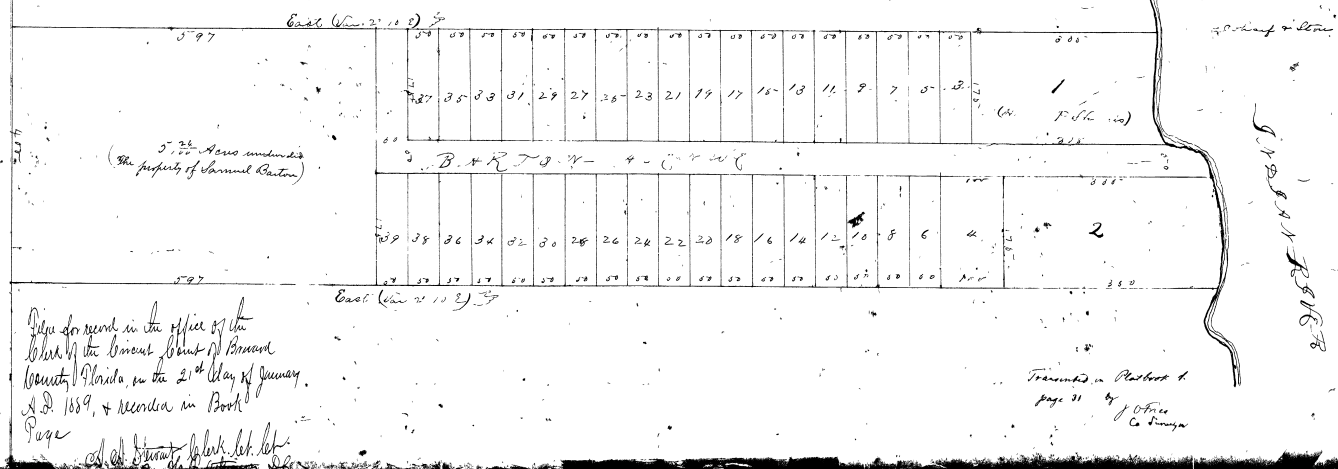


# PLAT OF ROCKLEDGE, FLORIDA

44

Embracing the land described in Dec. 10th 1887, page 219 in the Circuit Court Clerk's Office, for the county of Duval State of Florida, in being a part of Lot 12 Sec. 2 Township 25 S. Range 20 E. Placed on file at the instance of Samuel Weston et al. Lot 17 being the portion of former Phoenix Lot 31 being the property of Mrs C. B. Magnolia and the Presbyterians Church, this case being the property of Samuel Weston, deceased and Paded January 11th 1889 by 1889. Plat Scale 100 feet to the inch. All distances are given in feet.



File for record in the office of the Clerk of the Circuit Court of Duval County, Florida, on the 21<sup>st</sup> day of January A. D. 1889, & recorded in Book Page