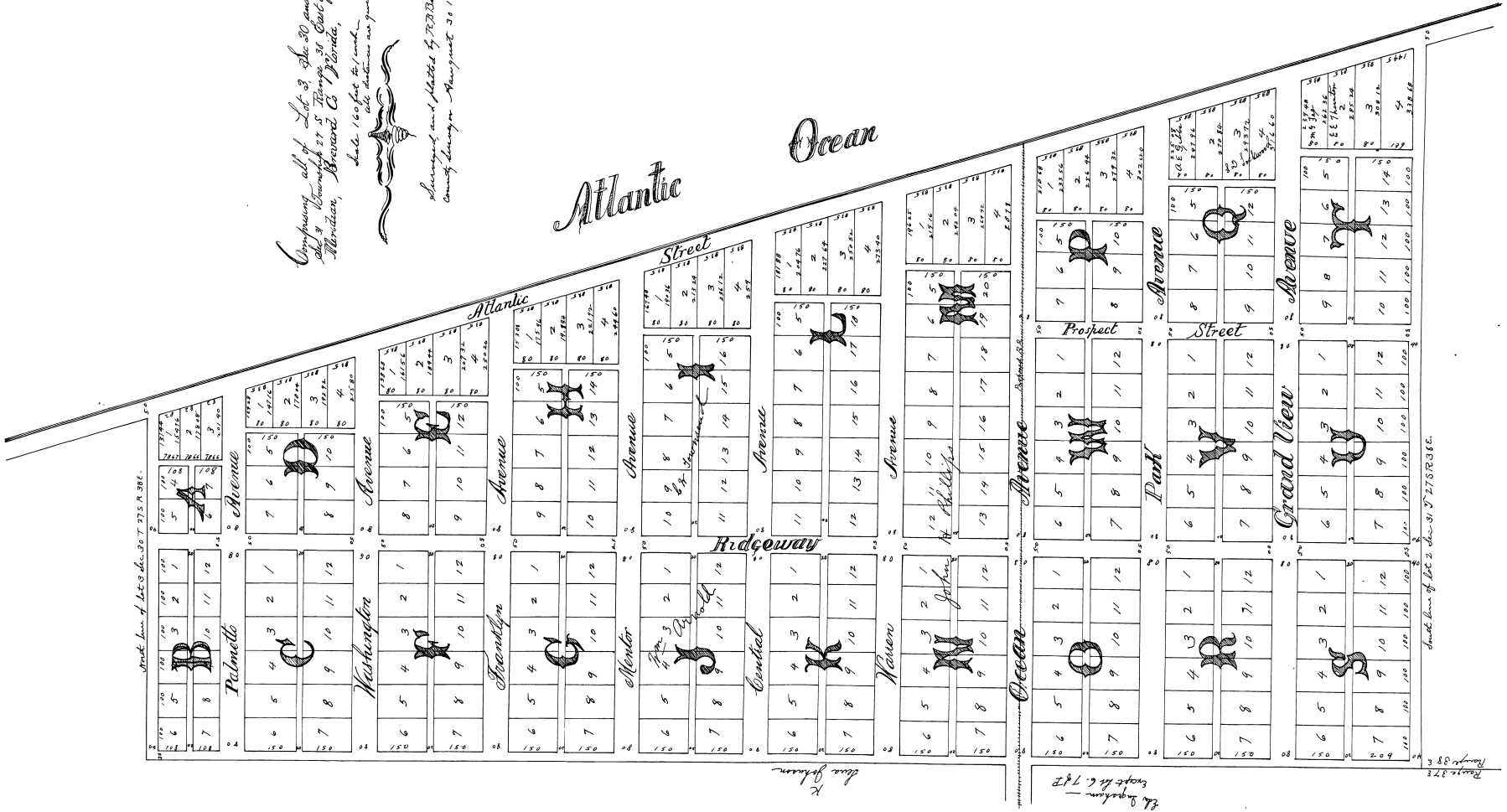


44  
 Comprising all of Lot 3, Sec. 30 and lots 1, 2  
 and 9 bounded by E. 7th St. to East of Tallahassee  
 Addition, Broward Co Florida,  
 and 160 feet to 1/4 sec.  
 all sections are given in feet otherwise  
 Surveyed and plotted by F.R. Dunsmuir  
 County Surveyor August 30 1888

STATE OF FLORIDA  
 THIS IS TO CERTIFY THAT THE CONTAINED IN A TRUE AND CORRECT COPY  
 OF THE RECORD AND RECORDS AND PLATS OF THE COUNTY OF BROWARD  
 COUNTY, FLORIDA  
 BY *James C. Taylor*  
 COUNTY CLERK



Width Line of Lot 3 Sec 30 T 27 S R 38 E.

Width Line of Lot 2 Sec 31 T 27 S R 38 E.

See Johnson

See Johnson  
 width in 6.742