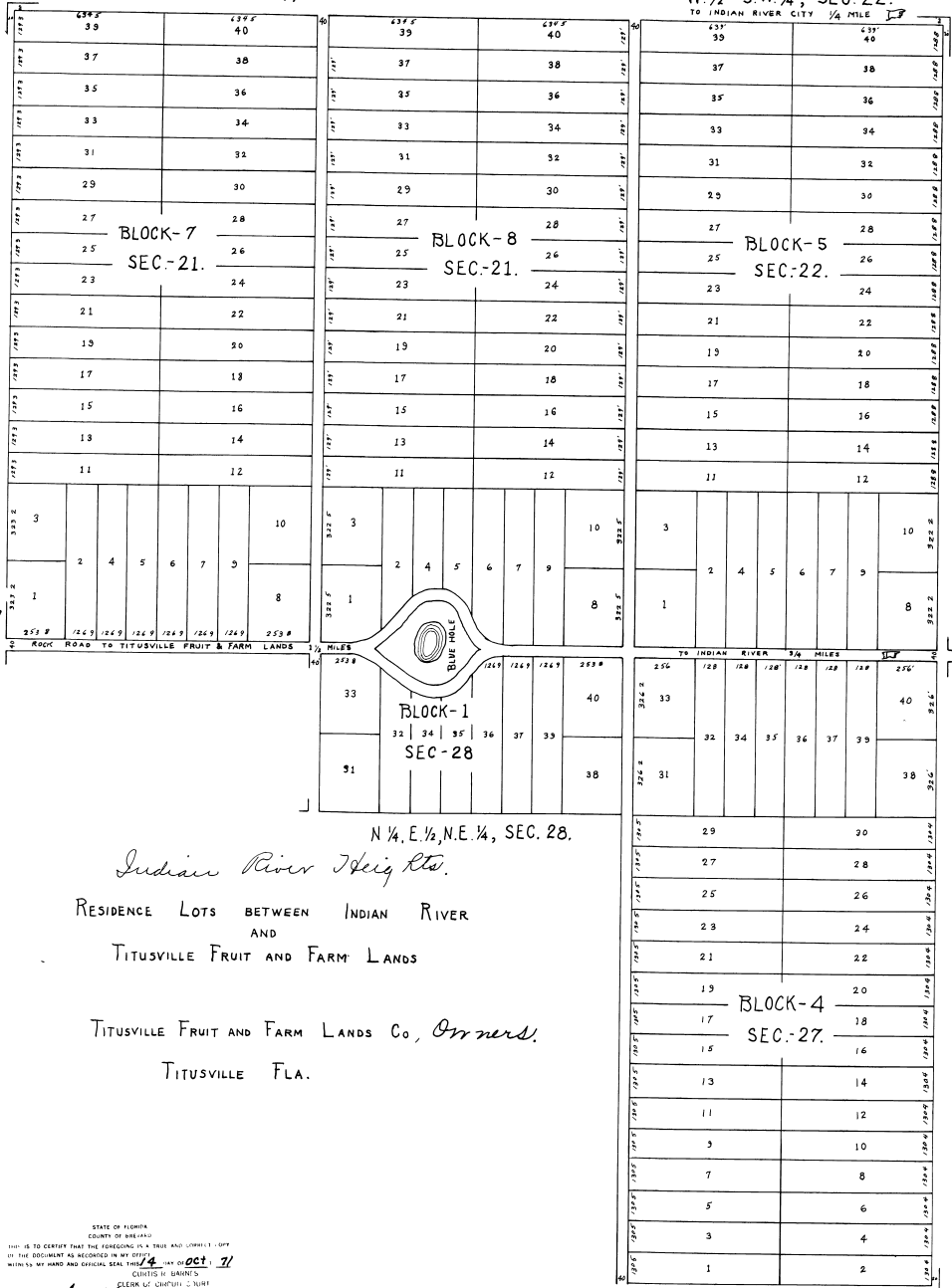


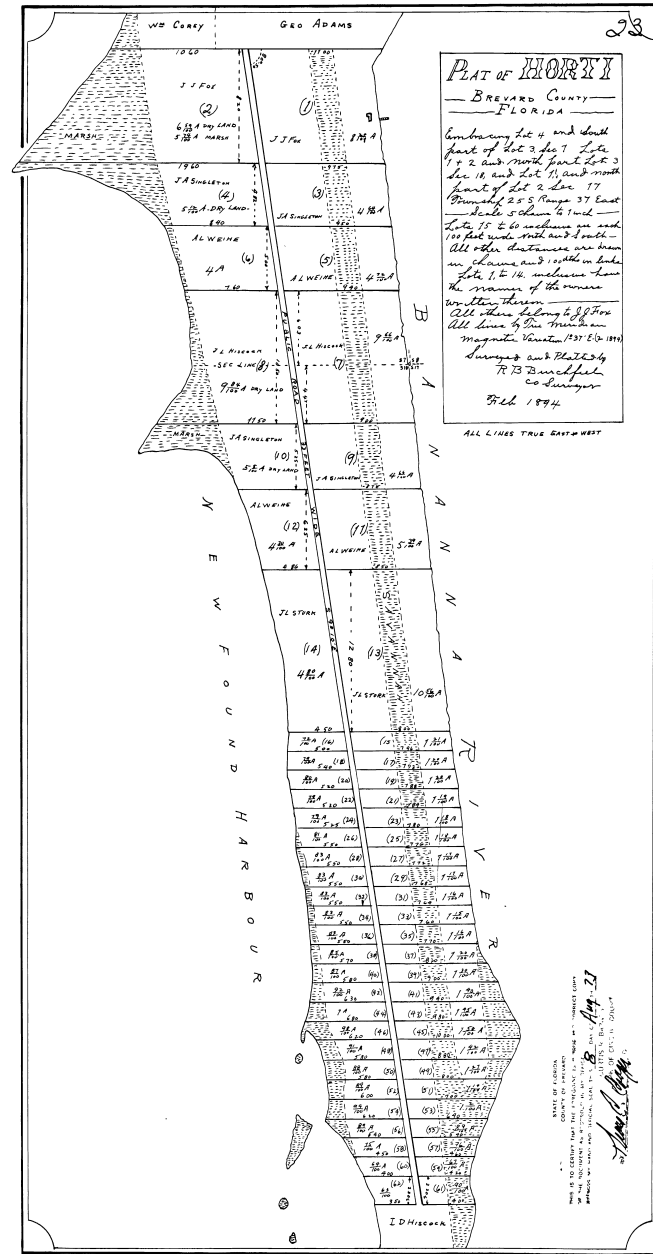
SE 1/4, SEC. 21

W 1/2 S.W. 1/4, SEC. 22



STATE OF FLORIDA  
COUNTY OF BREVARD  
I, CLYDE H. BAINES,  
CLERK OF CIRCUIT COURT,  
do hereby certify that the foregoing is a true and correct copy  
of the original as recorded in my office on Oct. 21  
1954 at Titusville, Fla.

W 1/2 N.W. 1/4, SEC. 27



PLAT OF HORTI P.B. O PG 23 COMPLETELY REPLATED PB-33