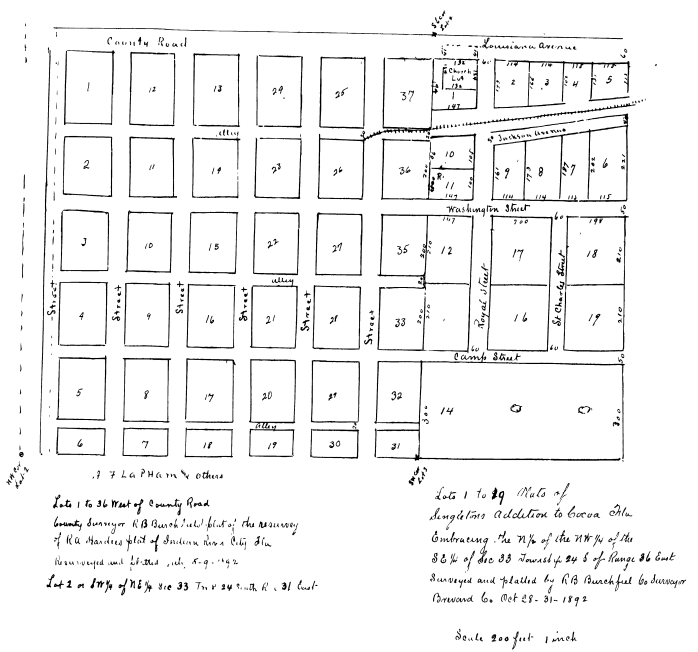


5.2



Lots 1 to 36 West of County Road
County Surveyor R.B. Beachfield plat of the survey
of R.A. Hardin plat of Section 30, City 31a
Beverly and District, etc., 1892

Lot 2 is 1/4 of 1/4 sec 33 T. 14 N. R. 31 East

Lots 1 to 29 West of
Washington Street Addition to Green St.
Containing the NW 1/4 of the
SE 1/4 of the 33 Township 20 S. of Range 36 East
Surveyed and platted by R.B. Beachfield Co. Surveyor
Beverly Co. Oct 25 - 31 - 1892

rebarred on back here of
Filed in the Clerk's Office
Beverly County Fla
this March 6th 1894
W. Stewart, Clerk
Inscribed in Platbook
1 page 29 by J.C. Davis
County Surveyor
W.D. Swadley, cor.
10/26/02