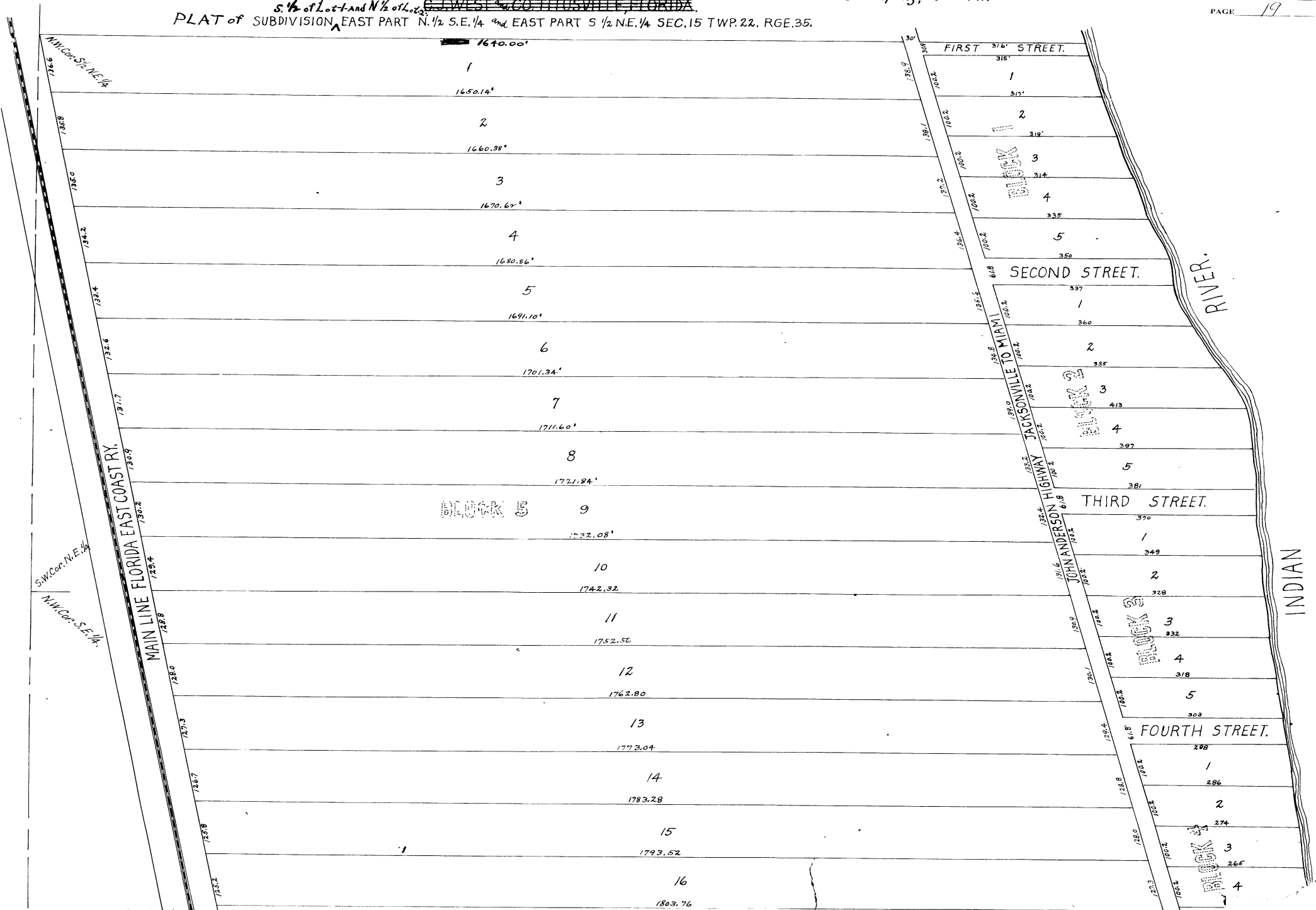


INDIAN RIVER RESIDENCE LOTS BREVARD COUNTY FLORIDA.

BEING SOLD BY

Titusville Fruit and Farm Lands Company, Owner

PLAT of SUBDIVISION ~~WEST 1/4 CO. TITUSVILLE FLORIDA~~ EAST PART N. 1/2 S.E. 1/4 and EAST PART S 1/2 N.E. 1/4 SEC. 15 TWP. 22, RGE. 35.



N.W. Cor. S.W. N.E. 1/4

S.W. Cor. N.E. 1/4

N.W. Cor. S.E. 1/4

MAIN LINE FLORIDA EAST COAST RY.

FIRST STREET.

SECOND STREET.

THIRD STREET.

FOURTH STREET.

INDIAN RIVER.

INDIAN RIVER.

BLOCK 4

BLOCK 2

BLOCK 3

BLOCK 4

BLOCK 5

- 1 1640.00'
- 2 1650.14'
- 3 1660.38'
- 4 1670.62'
- 5 1680.86'
- 6 1691.10'
- 7 1701.34'
- 8 1711.60'
- 9 1721.84'
- 10 1732.08'
- 11 1742.32'
- 12 1752.56'
- 13 1762.80'
- 14 1773.04'
- 15 1783.28'
- 16 1793.52'
- 17 1803.76'

- 1 318'
- 2 315'
- 3 319'
- 4 314'
- 5 335'
- 1 337'
- 2 360'
- 3 385'
- 4 413'
- 5 397'
- 1 370'
- 2 349'
- 3 328'
- 4 318'
- 5 308'
- 1 298'
- 2 286'
- 3 274'
- 4 265'